

SILURIAN TIMES

NEWSLETTER OF THE INTERNATIONAL SUBCOMMISSION ON SILURIAN
STRATIGRAPHY (ISSS)

(<http://silurian.stratigraphy.org>)

INTERNATIONAL COMMISSION ON STRATIGRAPHY (ICS)

No. 33 (for 2025)

Edited by Emilia Jarochowska



Opening ceremony of the Global Stratotype Section and Point (GSSP) of the Telychian Stage of the Llandovery Series, Silurian System, at El Pintado (Spain)

TABLE OF CONTENTS

Chairman’s corner.....	5
IUGS – Annual Report 2025.....	6
ISSS business meeting report 11.09.25.....	13
Reports of Activities in 2025.....	16
Working Group for the subdivision of the Pridoli series.....	16
Working Group for the base of the Wenlock series.....	16
Special Issue of Bulletin of Geosciences in honour of Jiří Kříž.....	16
Student report on Silurian research.....	16
ISSS annual meeting and the GSSP ceremony for the base of the Telychian.....	18
Discussion Forum.....	22
A new biostratigraphical level for the base of the Wenlock Series – a proposal.....	22
Response from the Working Group on the Base of the Wenlock Series.....	27
Announcements of meetings and activities in 2026.....	28
STRATI 2026 – Exploring the Depths: Bridging Tradition and Innovation in Stratigraphy.....	28
ISSS Meeting 2027.....	34
GTS2030 – Defining the Future of Timescale Calibration.....	36
ECOS 2026.....	39
Job opportunities.....	41
Obituaries.....	42
Anthony (Tony) Wright.....	42
Silurian Research 2025: News from the Members.....	44
Gudveig Baarli.....	44
Alyssa Bancroft.....	44
Christopher Barnes.....	44
James Barrick.....	44
Carlton Brett.....	44
Chen Zhongyang.....	46
Carlo Corradini.....	47
Maria G. Corrigan.....	48
Bradley (Brad) D. Cramer.....	49
Anne-Christine da Silva.....	49
Graciela Susana de la Puente.....	50
André Desrochers.....	52

Rein Einasto.....	52
Annalisa Ferretti.....	53
Jiří Frýda.....	55
Mansoureh Ghobadi Pour.....	56
Volodymyr Grytsenko.....	57
Juan Carlos Gutiérrez-Marco.....	57
Robert D. Hillier.....	59
Kathleen Histon.....	60
Huang Bing.....	60
Emilia Jarochowska.....	61
Stephen Kershaw.....	62
Steven LoDuca.....	62
David Loydell.....	63
Jörg Maletz.....	63
Štěpán Manda.....	64
Peep Männik.....	64
Tiiu Märss.....	65
Pat McLaughlin.....	65
Ana Mestre.....	66
Ian Percival.....	66
Vincent Perrier.....	66
José Manuel Piçarra d'Almeida.....	67
Leonid Popov.....	67
Sigitas Radzevičius.....	67
David Ray.....	68
Valeri Sachanski.....	69
Muhammad Aqqid Saporin.....	70
Ladislav Slavík.....	70
Petr Štorch.....	71
Zuzana Strossová.....	72
Sun Zongyuan.....	72
Petra Tonarová.....	73
Thijs R. A. Vandenbroucke.....	73
Olev Vinn.....	74
Wang Guangxu.....	75
James Wheeley.....	75
Nina Wichern.....	76

Seth Young.....	76
Zhan Renbin.....	76
Zhang Yuandong.....	77
Zhao Wenjin.....	78
Reports from friends of the Silurian System.....	79
Estefanía Asurmendi.....	79
Sara Romero.....	79
Petro Tsegelnyuk.....	80
Wei Xin.....	80

CHAIRMAN'S CORNER

Dear ISSS members,

last year the International Subcommittee on Silurian Stratigraphy achieved one important result with the golden spike ceremony for the new GSSP for the Telychian at the El Pintado section in Andalusia, Spain. The ceremony was held during our Silurian annual meeting, beautifully organized by Juan Carlos Gutierrez Marco and Sara Romero in Sevilla on September 10th-13th. The meeting consisted of 2 days of scientific communications and the ISSS business meeting, followed by the GSSP ceremony and a second day of field trip. Abstracts, short papers and the guidebook of the field trip were published in a special issue of Palaeontological Studies, a series of open access volumes by the Palaeontological Society of Spain.

The work on the other Silurian GSSPs continues. The working group for the subdivision of the Pridoli has almost concluded its work, and a proposal of the subdivision into the Jarovian and Radotinian stages has been prepared. The candidate GSSP has been identified the the Hvižd'alka section, in Czechia, and the primary criterion is the FAD of the graptolite *Wolynograptus bouceki*. In these days the text is under evaluation by the TMs: after their formal approval it will be submitted to ICS for discussion and formal voting. Once accepted the formal ratification by IUICS will be the last step. We hope that the procedure will be concluded in summer, and that consequently the two stages will be reported in the next updating of the International Chronostratigraphic Chart.

The working group for the base of the Sheinwoodian (= base of the Wenlock Series) is actively working, focusing on two candidate sections preliminarily identified in Gotland (Sweden) and Czechia. The goal would be to formalize the proposal likely in 2027.


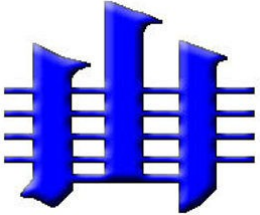
The goal for the near future is the replacement of the other inadequate GSSPs, and all of us are asked to cooperate according to our skills and expertise. Homerian, Gorstian and Ludfordian will be the next. As soon as the Radotinian GSSP is ratified, a new working group will be established.

In 2026 the Subcommittee will meet in Suzhou, China, in late June-early July within the STRATI 2026 congress. This big meeting is the official stratigraphical congress organized by ICS, and all the subcommittees will meet there. We organize a session on Silurian topics, where we hope to see many members presenting their research. The deadline for submitting abstracts is April 15th. For more information refer to the congress website (strati2026.org).

The first announcement of the Silurian meeting 2027 in Argentina, organized by Ana Mestre and colleagues, is published in this issue of Silurian Times.

In conclusion I would like to thank Emilia Jarochovska (secretary), Thjis Vanderbroucke (vice-Chair) and Huang Bing (web master) for their continuous work on the affairs of the ISSS.

Carlo Corradini

	<p>IUGS – ANNUAL REPORT 2025</p> <p>Subcommission on Silurian Stratigraphy (ISSS)</p> <p>https:// silurian.stratigraphy.org</p>	
---	--	---

1. BACKGROUND INFORMATION

Name of the ICS Constituent Group	Subcommission on Silurian Stratigraphy (ISSS)
Nature of the Constituent Group (commission/task group/initiative)	Subcommission
Website/social media links	https://silurian.stratigraphy.org/
Year of reporting	2025
Submitted by:	
Given Name	Carlo
Family Name	Corradini
Gender	M
Role in the ICS Constituent Group	Chair
Year of appointment to the position in the ICS Constituent Group	2024
Institution/Affiliation	Università di Trieste
Country	Italy
Email address	ccorradini@units.it

2. ORIGINAL WORKPLANS FOR 2025

ISSS Working Group on Sheinwoodian started to look for potential GSSP section, upon agreement on the boundary definition timeline

ISSS Working Group on the Pridoli almost completed the proposal for the subdivision of the Pridoli Series into Jarovian and Radotinian stages. The proposed GSSP has been located in the Hvížd'alka section (Czech Republic)

The GSSP ceremony for the replacement of the Telychian GSSP at El Pintado 1 section, Spain, was held on September 12, 2025.

A field meeting, with indoor scientific sessions and the ISSS business meeting, has been organized in September in Sevilla, Spain, in connection with the GSSP ceremony for the base of the Telychian Stage.

3. ACHIEVEMENTS IN 2025

3.1 Publications

NA

3.2 Conferences/congresses/workshops

Name of participants (insert rows if needed)	PhD student		
Gender	F		
Age			
Affiliation	Charles University (Praha)		
Country	Czech Republic		
Name of event (conference/congresses/workshops, dedicated meetings, fieldworks.)	ISSS Meeting 2025 “Advances in Silurian chronostratigraphy and high-resolution correlation” Seville, Spain, 10th–13th September 2025		
National/International	International		
Type of presentation if any (poster/oral presentation)	oral		

3.3 Other results

List any relevant activity that was supported by funds allocated by IUGS

Nature of the activity	ISSS Meeting 2025
Objective of the activity	Annual ISSS meeting and Telychian GSSP ceremony
Outcome	
National/International	International
Name of participant(s) (insert rows if needed)	ORGANIZING EXPENSES and support to participation of one officer and the chair of the Telychian working group
Gender	
Career status (early/mid/late)	
Affiliation	
Country	

4. INTERACTIONS

4.1 Interaction with other IUGS constituent group(s)

Name of the IUGS Constituent Group(s)	type of interaction and which are the results (e.g., joint workshop/publication/session at international conferences, etc..)

4.2 Interaction with other international organizations and/or projects outside IUGS

Name of the International Organizations and/or Projects	type of interaction and which are the results (e.g., joint workshop/publication/session at international conferences, etc..)

5. INCOME IN 2025

SUBVENTIONS	EURO
-------------	------

From IUGS	511.14
From other sources (specify the source and amount, insert rows if needed)	
TOTAL	511.14

6. EXPENDITURES IN 2025

ACTIVITIES	EURO
Conferences/congresses/workshops attended by members of the constituent group	
Conferences/congresses/workshops attended by early-career researchers and postgraduate students	
Costs related to committee meetings/fieldworks of the of the constituent group	1450
Costs related to committee/fieldworks of the Constituent Group attended by early-career researchers and postgraduate students	1000
Publications fees	
Dissemination/outreach/website	
Other costs (ORGANIZATION OF THE ISSS MEETING AND GSSP CEREMONY)	500
TOTAL EXPEDITURES	2950

7. OBJECTIVES AND WORKPLANS FOR THE YEAR 2026

Objectives (maximum 100 words presented in bullet points)	<ul style="list-style-type: none"> - complete the work of the Pridoli Working Group and formal proposal of the Radotinian GSSP - organization of a Silurian session at STRATI - Organization of the ISSS business meeting in connection with Strati meeting - start of the organization of the 2027 ISSS meeting in Argentina - publication of the new issue of the ISSS newsletter "Silurian Times"
Achievable Workplan (in bullet points; max 5 bullet points; more details can be provided in the annex)	<ul style="list-style-type: none"> - ratification of the Radotinian GSSP (upper Pridoli); - progress in replacement of the Sheinwoodian GSSP - establishment of the working group for the replacement of the Gorstian or Ludfordian GSSP - publication of the Newsletter "Silurian Times" - continuing updates of the website for Silurian Subcommittee
Planned conferences (in bullet points; more details can be provided in the annex)	STRATI 2026, June 28 – Suzhou (China), June 28-July 3, 2026
Planned publications on research to be supported by IUGS funds; more details can be provided in the annex)	The Global Stratotype Section and Point (GSSP) for the Radotinian Stage (Pridoli/Silurian) and the subdivision of the Pridoli Series
Other activities in bullet points; more details can be provided in the annex)	

8. BUDGETARY PROPOSALS FOR 2026

ACTIVITIES	EURO
-------------------	-------------

Conferences/congresses/workshops to be attended by members of the constituent group	1000
Conferences/congresses/workshops to be attended by early-career researchers and postgraduate students	
Costs related to committee meetings/fieldworks of the constituent group	5000
Costs related to committee meetings//fieldworks of the constituent group to be attended by early-career researchers and postgraduate students	500
Publications fees	
Dissemination/outreach/ website	
Other costs (specify the type of costs)	
TOTAL REQUESTED BUDGET	6500

Annex:

DESCRIPTION (maximum 100 words)

Name of the Constituent Subcommittee	Subcommittee on Silurian Stratigraphy (ISSS)
Divisions (e.g., subcommittee/working groups)	Working Group for the redefinition of the Sheinwoodian GSSP Working Group for the subdivision of the Pridoli Series
Aims and Objectives	<p>Mission statement</p> <p>The objectives of the Subcommittee relate to three main aspects of IUGS policy: The development of an internationally agreed scale of chronostratigraphic units, fully defined by GSSPs at Series and Stage levels and related to a hierarchy of units (Substages, Standard Zones, Subzones etc.) to maximize relative time resolution within the Silurian Period; Establishment of frameworks and mechanisms to encourage international collaboration in understanding the evolution of the Earth during the Silurian Period; Working towards an international policy concerning conservation of geologically important sites (such as GSSPs, global and regional stratotype sections, etc.).</p> <p>Goals</p> <p>Rationalization of Global chronostratigraphical classification Intercalibration of fossil biostratigraphies, integrated zonations, and recognition of global datums. Establishment of magneto- and chemostratigraphic scales Redefinition of stage boundaries and restudy of global boundary stratotype sections Correlation of Silurian rock successions and events, including marine and non-marine Application of astronomically tuned cyclostratigraphy integrated with radiometric data and biostratigraphy</p>

Indicate, if possible, how your activities align with the goals of the United Nations Sustainable Development, see https://sdgs.un.org/goals	

DIRECTORY OF OFFICERS 2025-2028

Names and Addresses of Current Officers for 2024-2028:

Carlo Corradini, Chair
Dipartimento di Matematica, Informatica e Geoscienze
Università di Trieste
via Weiss 2, I- 34128, Trieste, Italy
Tel.: +39-040-5882033
Email.: ccorradini@units.it

Thijs Vandenbroucke, Vice-Chair
Department of Geology
Ghent University
Krijgslaan 281/ S8, BE-9000, Ghent, Belgium
Tel.: +32-09-264-4515
Email: Thijs.Vandenbroucke@UGent.be

Emilia Jarochowska, Secretary
Department of Earth Sciences
Utrecht University
Vening Meinesz Building A, Princetonlaan 8A, 3584 CB, Utrecht, Netherlands
Email: e.b.jarochowska@uu.nl

Names and Addresses of Current Voting Members:

Alyssa M. Bancroft
Indiana Geological and Water Survey
Indiana University
915 East 11th Street, Bloomington, 47405, Indiana, USA
Tel.: +1-(812)856-5313
Email: ambancroft@iu.edu

Bradley D. Cramer
Department of Earth and Environmental Sciences
University of Iowa
Iowa City, 52242 Iowa, USA
Tel.: +1-319-335-0704
Email: bradley-cramer@uiowa.edu

Annalisa Ferretti
Dipartimento di Scienze Chimiche e Geologiche
Università di Modena e Reggio Emilia,
Via Campi 103, I-41125, Modena, Italy
Tel: +39-059-2058470
Email: ferretti@unimore.it

Juan Carlos Gutiérrez-Marco
Instituto de Geociencias (CSIC, UCM),
and área de Paleontología GEODESPAL, Facultad CC. Geológicas UCM
José Antonio Novais 12, 28040 Madrid, Spain
Email: jcgrapto@ucm.es

Huang Bing, Webperson
Nanjing Institute of Geology and Paleontology
Chinese Academy of Sciences
39 East Beijing Road, Nanjing, 210008, China
Tel.: +86-2583282189
Email: bhuang@nigpas.ac.cn

Tõnu Meidla
Institute of Ecology and Earth Sciences
University of Tartu
14A Ravila Street, Tartu, 50411 Estonia
Tel: +372-7375895
Email: tonu.meidla@ut.ee

David C. Ray
School of Geography, Earth and Environmental Sciences
University of Birmingham
Birmingham B15 2TT, United Kingdom
Tel.: +44-07792638177
Email: daveray01@yahoo.com

- Valeri Sachanski
1. The University of Mining and Geology „St. Ivan Rilski“
Studentski Grad, Sofia 1700, Bulgaria
 2. Department of Geology and Geo-Information
Geological Institute, Bulgarian Academy of Sciences
Acad. G. Bonchev Str., Bl. 24, Sofia 1113, Bulgaria
Email: valeri.sachanski@mgu.bg, v_sachanski@geology.bas.bg

Ladislav Slavík
Department of Paleobiology and Paleoecology
Institute of Geology, Academy of Sciences of the Czech Republic
Rozvojová 269, Praha 6, 165 00, Czech Republic
Tel: +420-233087247
Email: slavik@gli.cas.cz

Petra Tonarová
Czech Geological Survey
Geologická 577/6, Praha 5, 152 00, Czech Republic
Tel: +420-251085216
Email: tonarova@gli.cas.cz

Zhang Yuandong

Nanjing Institute of Geology and Paleontology
Chinese Academy of Sciences
39 East Beijing Road, Nanjing, 210008, China
Email: ydzhang@nigpas.ac.cn

Working groups and leaders

Base of Sheinwoodian Working Group

Leader: Bradley D. Cramer

Přídolí Working Group

Leader: Carlo Corradini

Corresponding members (simple list of names as known)

Fernando Alvarez

B. Gudveig Baarli

Chris Barnes

James E. Barrick

Carlton Brett

Frank R. Brunton

Carole J. Burrow

Mikael Calner

Maria G. Corrigan

Anne-Christine da Silva

G. Susana de la Puente

André Desrochers

Rein Einasto

Mansoureh Ghobadi Pour

Jessica Carolina Gómez

Volodymyr Grytsenko

Juan Carlos Gutiérrez-Marco

Olle Hints

Kathleen Histon

Markes E. Johnson

Stephen Kershaw

Anna Kozłowska

Philippe Legrand

Qi-jian Li

Steve LoDuca

David Loydell

Jörg Maletz

Peep Männik

Tiiu Märss

Ana Mestre

Neo McAdams

Alexander (Sandy) D. McCracken

Axel Munnecke

Ian Percival

Vincent Perrier

José Manuel Piçarra d'Almeida

Leonid Popov

Sigitas Radzevičius

Jiayu Rong

Muhammad Aqqid bin Saporin

Thomas Servais

David Siveter

Amalia Spina

Andrej Spiridonov

Petr Štorch

Petra Tonarová

Alan Thomas

Jacques Verniers

Olev Vinn

Guangxu Wang

Xiaofeng Wang

James Wheeley

Nina Wichern

Seth Young

Renbin Zhan

Wenjin Zhao

Wang Yi

ISSS BUSINESS MEETING REPORT 11.09.25

Hybrid at the Instituto Geológico y Minero de España in Sevilla, chaired by Carlo Corradini, minutes taken by Emilia Jarochowska and Carlo Corradini.

Attendance

Titular Members (13)

Alyssa Bancroft (online), Carlo Corradini (chair), Brad Cramer (online), Annalisa Ferretti (online), Juan Carlos Gutiérrez-Marco, Bing Huang (online), Emilia Jarochowska (secretary), Tõnu Meidla (online), David C. Ray (online), Valeri Sachanski, Ladislav Slavík, Petra Tonarová, Zhang Yuandong (online).

Corresponding Members (6)

Jiří Frýda, David Loydell, José Manuel Piçarra de Almeida, Sigita Radzevičius, Muhammad Aqqid Saparin, Petr Štorch

Others (5)

Saturnino Lorenzo Alvarez, Barbora Frydova, Sara Romero, Ausonio Ronchi, Zuzana Strossova

At the beginning the Chair thanked Juan Carlos and Sara Romero for organizing the meeting and the participants for their contribution.

Apologies for absence have been passed from Thijs Vandenbroucke (Vice-Chair) and Vincent Perrier (CM).

News from ICS meetings with the subcommission

Carlo reported on the contents of the last meeting with the ICS:

1. The chronostratigraphic chart has been realized in December 2024, most changes related to the absolute timing of the boundaries. The work was mostly carried out by Brad Cramer and the respective subcommissions.
2. A new template for the proposals for new GSSPs has been discussed. Currently some proposals are very simple and to the point, some extremely detailed. For this reason the new ICS Board is preparing a new template, but the challenge is to find a format that fits all systems. The proposal is pertinent to the current work on new GSSPs in the Silurian. Particularly the proposals that are almost finished (2 in the Silurian) would be affected by this change, but the ICS Board is pressing to introduce the new template. Some proposals are just to indicate where the boundary is in the given section. Carlo proposed that a new definition of a boundary is needed, so it can be recognized elsewhere in the world. Pros and cons of different degrees of detail have been discussed in the meeting.
3. Strati meeting. The last one was in Lille in 2023. Normally the next one would be in 2027, but it has been decided to push it to 2026 to have it halfway between two geological congresses. The ICS should meet there and the subcommission is strongly encouraged to be represented. It puts pressure on the ISSS to organize our activities according to this. Now that the IPC and the Strati meetings take place in the same year, for many ISSS members both meetings are important and these members must find a way to attend both. This year the ICS gave the subcommission 60% of what was requested. The application was in EUR but it was processed as USD, which resulted in a cut of 10% due to currency conversion. Also the participation of a member in a meeting was questioned because the ICS did not see the need for their participation.

Working group updates

Sheinwoodian

Brad Cramer reported on a section in Gotland. A drillcore has been obtained less than 1 km from Lusklint. Both this and the Czech alternative section are awaiting decisions on funding. The earliest when the proposal could be finished is 2026, more likely 2027 – at least one of the proposals if not both.

Ladislav indicated that no schedule could be provided, it depended on the funding.

Carlo suggested that ICS money could be requested for GSSP activities.

Brad Cramer reported on the Penrose conference in Iowa City, which would be the kickoff for GTS 2030. The conference focuses on core speakers, with 90 people allowed. Most speakers (ca. 60%) are invited. Most of them are the members of the subcommission for the timescale calibration. At least one member from each subcommission is invited. The dates are May 30th - June 5th 2026. The meeting includes a one day fieldtrip to the D/C boundary section in Iowa.

Radotinian

Carlo presented the proforma proposal for the base of the Jarovian stage (lower Pridoli) according to the template. Most of the data is already published in Manda et al. (2023) *Bulletin of Geosciences*.

The template requires that a paleogeographic map is added and the proposal should indicate where it is possible to correlate with the rest of the world. The boundary should be marked on the photos in the proposal.

The primary marker is the FAD of *Wolynograptus bouceki*. This zone is widely recognized around the world and is present in all stratigraphic schemes.

A secondary marker is the FAD of *Ou. elegans detortus* – also a global marker.

A correlation with chitinozoans is available, written by Amalia Spina. Bivalves have been described by Jiří Frýda, ostracods by V. Perrier, chemostratigraphy has been provided by Brad Cramer based on global data, who also provided radioisotopic dating, magnetostratigraphy is not available yet, as typical for the Silurian System, and correlation with other sections is awaiting to be written by Carlo. Other notable features include a horizon with characteristic crinoids at the base of the *detortus* Zone and the pelagic cephalopod *Kopaninoceras fluminense* appears close to the base of the *W. bouceki* Zone.

A statement is needed that the section will be accessible in the future and whether it can be protected.

Petr reported that the owner is willing to cooperate and willing to issue a general permission. But visitors should always announce themselves at the gate in the interest of protecting the section.

It is not yet clear if a foreigner can enter the section without anyone from the Geological Survey or another Czech colleague and needs to be negotiated by the Geological Survey. Carlo highlighted the importance of establishing this information, because its lack would result in a rejection of the proposal. A discussion took place concerning potential risks to the quarry, including the fact that there are old pits used by Barrande above the quarry, which afford some level of additional protection and perhaps should be included in the GSSP proposal. Carlo emphasizes the urgency of the information on the future accessibility of the quarry.

Jiří expressed his concerns over the section's overprinted C and O_{conodont} isotopes, which is common in the Prague Basin. But Carlo indicated that this can be circumvented with a SABS, by choosing a section with good chemostratigraphy.

Gorstian and Ludfordian problematic GSSP

Carlo proposed for discussion the question whether a new working group should be started or would it be better to wait until the two proposals currently prepared are completed? Pridoli is expected to take longer, because a section needs to be found.

Brad noted that the ICS pays attention to how long the work packages take, so given the number of people involved in Silurian stratigraphy it would be better to stick to two groups. This observation was met with agreement and the Subcommittee decided to postpone the formation of new Working Groups.

Website

Carlo extended his thanks for Huang Bing's work. Bing reported that the webpage has been updated and asked what else needed to be updated besides the meetings and whether anyone had Silurian Times older than no 10. Huang Bing extended a call to search for older ones.

Carlo reported that the ICS webmaster was working on an interactive version of the chart. He also reminded the meeting participants of the need to use the IUGS logo whenever using the stratigraphic chart.

Finances

511.14 EUR was received this year from the ICS and some had been left from last year. The money was used to support the executive members present and the conference lunch.

Meetings

Next year's STRATI meeting is in China. Carlo reported that more funding is promised to the subcommission to support the subcommission's representation.

Future meetings

Strati2026 meeting in Suzhou June 28th - July 3rd, with a large set of pre-, mid- and post-conference field trips. Of interest to ISSS members may be a 7-day preconference on critical stratigraphic boundaries in the Yunnan province with the D/C boundary and a famous site with the Cambrian radiation. Another is a mid-conference one-day trip showcasing the late Ordovician Anji biota with sponge fossils.

For 2027, an official proposal has been received from Argentina. The organizers would be Ana Mestre, Josephina Carlorossi, Silvio Peralta, and ...[please fill out, Carlo]. Carlo shared a presentation with the meeting proposal. The best period to visit is September or May, but the organizers are willing to adapt the timing. The low attendance at the meeting in Seville indicated that September is difficult because of the teaching obligations of many members, therefore preference was given to July or early August.

For 2028 the International Geological Congress is planned in Calgary, the Subcommission is expected to meet there. Traditionally, very few stratigraphers attend. It is therefore possible to consider a meeting related to any of the new GSSPs instead, possibly combined with the opening of the new GSSP.

Membership

Carlo extended his request to corresponding members to send their correspondence. It is also desirable to increase the number of members. A new call for nominations will be announced soon.

REPORTS OF ACTIVITIES IN 2025

WORKING GROUP FOR THE SUBDIVISION OF THE PRIDOLI SERIES

The Pridoli working group's primary objectives are to propose the division of the Přídolí series into two stages, called the Jarovian and the Radotinian, and to propose the GSSP for the Radotinian. It is composed by Carlo Corradini (Chair), Maria Giovanna Corrigan, Neo McAdams, Sigitas Radzevičius, Ladislav Slavík, Andrej Spiridonov and Petr Štorch. Other experts have been contacted for specific topics.

The work is nearly complete, and the formal proposal has been drafted. The candidate GSSP for the Radotinian has been identified the the Hvížd'alka section, Czech Republic, and the primary criterion is the FAD of the graptolite *Wolynograptus bouceki*, which is well approximated by the FAD of the conodont *Oulodus elegans detortus*, and by other first occurrences in other fossil groups. It results that the timeline corresponding to the GSSP can be traced even in sections where the primary and secondary markers are not present.

The proposal is now being evaluated by the ISSS TMs, and, once approved, will be sent to the ICS for formal approval.

Carlo Corradini – Chair

WORKING GROUP FOR THE BASE OF THE WENLOCK SERIES

Work continues on section from Czechia and Sweden for potential new locations for the base Wenlock GSSP. In Sweden, a new 'behind the outcrop' core was drilled from <1km away from the Luskint section, and this core is currently being studied at the University of Iowa. Carbonate carbon and organic carbon isotopes have already been recovered from this new core and whole-rock geochemistry is currently underway. The carbon isotope data from this section are part of Brittany Stolfus' PhD dissertation that is anticipated to be completed this summer. The whole-rock geochemistry is part of Corielle Jennings' MS thesis that is anticipated to be completed in 2027. We hope to have two completed candidate sections available for voting by late 2027 to early 2028, prior to the IGC meeting in Calgary.

SPECIAL ISSUE OF BULLETIN OF GEOSCIENCES IN HONOUR OF JIŘÍ KŘÍŽ

The special issue of the Bulletin of Geosciences (4/2025) has been released to honor the memory and scientific legacy of the distinguished Czech geologist Jiří Kříž. This comprehensive issue opens with a preface including a complete bibliography of his life's work. It also features three editorials reflecting on his life and professional impact, alongside a collection of 17 original research papers from scientists around the world. The scientific content spans a wide range of topics, focusing on Paleozoic bivalves, the paleoecology of various Silurian fossil groups, and Silurian stratigraphy.

Marika Polechová, Jiří Frýda, Štěpán Manda, Editors of this Special Issue

<http://www.geology.cz/bulletin/>

STUDENT REPORT ON SILURIAN RESEARCH

This may seem like an irregular contribution, but I hope that it will stimulate further contributions by and for students. Below you can find a report by a recent BSc graduate who has carried out field- and lab-based research on a project addressing Silurian stratigraphy. Incorporating students in research is essential for promoting the Silurian System and

stratigraphic research skills in education. In this case, the project was made possible thanks to the collaboration between Dave Ray in the UK, who contributed the expertise on local stratigraphy and outcrop conditions, and Utrecht University, where isotope analyses were possible and where we were happy to find an interested student, who applied for own funding to cover the costs of fieldwork. I would like to encourage supervisors to promote student projects and share student opportunities.

Emilia Jarochowska

BSc thesis report on the Homeric CIE in the Usk Inlier, Wales

During 2025, my thesis on the Silurian was focused on the Homeric stratigraphy of the Usk Inlier of Wales, UK. I integrated carbon isotope data and sequence stratigraphy. I was supervised by David Ray and Emilia Jarochowska. The results are contributing to a manuscript with David Ray as the main author. We hope to publish the manuscript in 2026.

A notable outcome of this study was that the onset of the Homeric CIE was identified within the Ton Siltstone Formation, and is associated with regressive wave-rippled sandy siltstones, with the overlying first peak of the CIE within nodular limestones, that are representative of the early transgressive systems tract. The Usk Inlier succession can be correlated with the Much Wenlock Limestone Formation of the wider Midland Platform, as well as key successions upon Baltica.

Lisa Oostra

Utrecht University, Dept. of Earth Sciences, The Netherlands

Email: lisaoostra@gmail.com



Fieldwork that I conducted to collect carbon isotope and lithostratigraphical data.

Author: David C. Ray

ISSS ANNUAL MEETING AND THE GSSP CEREMONY FOR THE BASE OF THE TELYCHIAN

Seville, Spain, 9-13 September 2025

The annual meeting of the International Subcommittee on Silurian Stratigraphy was held in Seville, Spain, in September 2025. Two days of indoor scientific sessions and the ISSS Business meeting were organized in the magnificent building of the Delegation of the Spanish Government in the emblematic *Plaza de España* in Seville, and were followed by the GSSP ceremony for the replacement of the GSSP of the Telychian stage. The scientific meeting was attended by researchers affiliated in eight countries and an invited keynote talk by Dr. David Loydell. The GSSP ceremony was followed by a second day of field excursion to the Cerrón del Hornillo Syncline. The abstracts, short papers and the guidebook of the field trip were published in a special issue of *Palaeontological Studies* (<https://sepaleontologia.es/portfolio-item/silurian-stratigraphy-meeting-2025/>).

The new Telychian GSSP is located in the El Pintado I section, and the primary criterion is the FAD of the graptolite *Spirograptus guerichi*. Secondary markers include the first appearance of *Streptograptus picarraii* and the "Rumba low" negative $\delta^{13}\text{C}$ organic carbon excursion found 1.4–1.6 meters higher in the section.

The section is located in northern Andalusia, about 70 km north of Seville, in the municipality of Cazalla de la Sierra and in the Sierra Norte de Sevilla Unesco Global Geopark.

El Pintado replaces a previous GSSP that had been established in 1985 at a quarry in the historical type area of the Llandovery Series in southern Wales (UK). That original Welsh site suffered from significant scientific problems discovered after its ratification — a sedimentary mélange, stratigraphic discontinuities, and a defining criterion based on brachiopod evolutionary changes that proved difficult to correlate globally. In 2014, the ISSS formed a working group to find a replacement. Three candidate sections were evaluated — in Sweden, China, and Spain. The El Pintado section emerged as the best candidate due to the exceptional quality of its continuous, uninterrupted succession of graptolitic black shales. The ISSS and ICS formally approved the new GSSP in 2023, and the International Union of Geological Sciences (IUGS) ratified the decision in 2024.

The scientific case for Cazalla de la Sierra rests on exceptional geological preservation. The El Pintado 1 section lies within the Valle Syncline in the Ossa-Morena Zone of the Iberian Massif. It exposes a condensed but remarkably continuous succession of graptolite-rich Silurian black shales approximately 150 meters thick, spanning from the base of the Rhuddanian (earliest Silurian) to the upper Ludfordian. Most of the standard graptolite biozones of the entire Silurian System can be identified in this single section. More than 200 species of Llandovery graptolites have been described from there, including 19 species new to science.

The GSSP ceremony was organized on September 12th, subdivided into two parts: first an indoor session in the municipal building of Cazalla de la Sierra with the official talks by several politicians representing local and regional institutions (see list below), and by the ICS Chair, Elisabetta Erba; then the scientific part in the field, including the festive uncovering of the monument and the placing of the Golden Spike.

Studies of this site began in 1999, initiated by Juan Carlos Gutiérrez-Marco, and involved an international team of four paleontologists and stratigraphers: Gutiérrez-Marco himself (IGEO, CSIC-UCM, Madrid), David K. Loydell (University of Portsmouth, UK), Petr Štorch (Czech Academy of Sciences, Prague), and Jiří Frýda (Czech University of Life Sciences Prague / Czech Geological Survey). Silurian geological research in the Seville region dates

back to the late 19th century, but it was the discoveries of the French geologist Michel Robardet in the 1970s that first revealed the exceptional quality of the region's stratigraphy and fossil record, establishing it as a model area for Silurian studies.

The event was an opportunity for social impact and promotion of stratigraphy. The First Vice President of the ICOG (*Ilustre Colegio Oficial de Geólogos*, Spain's official college of geologists) insisted on "the need to promote geological research and geoconservation from public policies, while encouraging the authorities present to invest in geological knowledge of the lands that constitute the public domain". The Telychian GSSP is now one of only 81 globally ratified reference points for the Phanerozoic, and by a wide margin the oldest geological marker on Spanish soil. For the Sierra Morena de Sevilla UNESCO Global Geopark, it confers a level of scientific prestige shared by only a handful of protected areas worldwide.

Carlo Corradini, Emilia Jarochovska, Sara Romero



Group photo of the participants to the ISSS meeting in Sevilla with the logo of the congress representing the Golden Spike and the graptolite *Spirograptus guerichi*, marker for the redefined base of the Telychian.



Banner prepared for the indoor session of the GSSP ceremony in the municipality of Cazalla de la Sierra.



The authors of the proposal for the replacement of the Telychian GSSP, and members of the Telychian Working Group of the ISSS. From left to right: Petr Štorch, David Loydell, Juan Carlos Gutiérrez-Marco and Jiri Frýda.



The “Telychian GSSP monument”.



Members of the ISSS and the ICS Chair at the golden spike, the ICS Chair Elisabetta Erba (third from the right) and ISSS Chair Carlo Corradini (sixth from the right).

DISCUSSION FORUM

This column of the Newsletter serves for debates between Members. Opinions expressed here do not represent official ISSS or ICS positions.

A NEW BIOSTRATIGRAPHICAL LEVEL FOR THE BASE OF THE WENLOCK SERIES – A PROPOSAL

The ISSS has for a considerable time been grappling with the challenges presented by the highly unsatisfactory nature of the existing GSSP for the base of the Wenlock Series at Hughley Brook, Shropshire, England. Attempting to find a replacement has consumed many years of research, but all sections studied thus far have proved unsuitable. Work is currently being planned/undertaken on two potential sites that might finally resolve the situation: on NW Gotland, Sweden (Cramer 2025) and at Vyskočilka in the Czech Republic (Slavík et al. 2025).

Here, however, I suggest a different approach: moving the base of the Wenlock stratigraphically downwards to the base of the *Cyrtograptus lapworthi* graptolite Biozone, which approximates with both the base of the *Pterospathodus amorphognathoides amorphognathoides* conodont Biozone and the base of the *Conochitina acuminata* chitinozoan Biozone.

Selecting this new level as the base of the Wenlock Series has a large number of potential advantages, included within the sections below which briefly discuss various aspects of the proposal.

Graptolites

Cyrtograptus lapworthi is a widespread species, recorded from and used as a biozonal index in peri-Gondwanan Europe (e.g. Loydell et al. 2009; Štorch 2023), Gondwana (Lüning et al. 2000), Avalonia (e.g. Zalasiewicz et al. 2009) and Baltica (e.g. Bjerreskov 1975). It has been reported also from China (e.g. Fu et al. 2006) where a *Cyrtograptus lapworthi* Biozone forms part of the Chinese graptolite biozonal scheme (Rong et al. 2018, fig. 4). The biozone was considered to be “more or less the exact correlative” (Lenz 1978) of the *Cyrtograptus sakmaricus-laqueus* Biozone of Arctic Canada, usually referred to subsequently as the *Cyrtograptus sakmaricus* Biozone (e.g. Melchin 1989), although in China the *sakmaricus* Biozone is underlain by the *lapworthi* Biozone. Arctic Canada is one of the few regions from which *C. lapworthi* has not been recorded.

Cyrtograptus lapworthi is accompanied in the lower half of its biozone by *Streptograptus wimani*, offering a secondary graptolite marker. This species is also widely reported: from Gondwana (Lüning et al. 2000), peri-Gondwanan Europe (e.g. Loydell et al. 2009; Štorch 2023), Avalonia (e.g. Zalasiewicz et al. 2009) and Baltica (e.g. Loydell et al. 2003).

Should the base of the Wenlock coincide with that of the *Cyrtograptus lapworthi* Biozone then all occurrences of the genus *Cyrtograptus* would be from the Wenlock Series, enhancing the stratigraphical utility of the genus.

Cyrtograptus murchsoni, index species of the current lowermost Sheinwoodian graptolite biozone, can be difficult to distinguish from *Cyrtograptus centrifugus*, especially when only incomplete specimens are available (Loydell and Cave 1994). This and the fact that the stratigraphical range of *C. centrifugus* extends to a level within the upper half of the *murchsoni* Biozone can make confident assignment of samples to either the *centrifugus* or *murchsoni* Biozone difficult.

Conodonts

Pterospirifer amorphognathoides amorphognathoides has been studied in considerable detail (Männik 1998). It has a widespread (although not global) distribution and has been recorded very frequently (e.g. see extensive synonymy list in Männik 1998). It was one of Walliser's (1964) original conodont biozonal index species.

At present the *Pterospirifer amorphognathoides amorphognathoides* Biozone straddles the Llandovery/Wenlock boundary (Männik 2007a). Moving the base of the Wenlock to the base of the *amorphognathoides* Biozone would mean that the entirety of the biozone would reside within the Wenlock.

There remain, however, (1) the problematical co-occurrence of *Pt. a. amorphognathoides* with the graptolite *Stimulograptus clintonensis* (restricted to the lower-middle Telychian elsewhere) in New York State (Loydell et al. 2007; Sullivan et al. 2014) and (2) the records of *Pt. a. amorphognathoides* from extraordinarily low levels in the Llandovery (upper Rhuddanian and Aeronian of the Mirny Creek and Ina River sections, respectively, of NE Russia; Zhang and Barnes 2007).

Chitinozoans

The global chitinozoan biozonation for the Telychian shown in GTS2020 (Melchin et al. 2020) is much coarser than that for graptolites and conodonts, with the base of the *Cyrtograptus lapworthi* Biozone shown correlating with a level within the middle third of the *Angochitina longicollis* Biozone.

Locally, however, more detailed chitinozoan biozonations have been erected which suggest that some chitinozoan species could be useful in defining the base of the Wenlock Series should it be moved downwards to the base of the *Cyrtograptus lapworthi* graptolite Biozone. In the Banwy River section, Wales, Mullins and Loydell (2001) erected a *Conochitina acuminata* Biozone, with its base coinciding with that of the *Cyrtograptus lapworthi* Biozone in the same section. In the Kolka core, Latvia the base of the *Conochitina acuminata* Biozone again correlates with the base of the *Cyrtograptus lapworthi* Biozone (Loydell et al. 2010). The FAD of four other chitinozoan species in the Kolka core is in the same sample as that of the distinctive *Conochitina acuminata*. In the Ohesaare core, Estonia, the FAD of *C. acuminata* is within the lower part of the *lapworthi* Biozone, but not at its base (data from Loydell et al. 1998 and Nestor 2005).

Retaining the base of the Wenlock Series at or close to its current level (at the base of or within the *Cyrtograptus purchisoni* graptolite Biozone) would place it at a level within the *Margachitina margaritana* chitinozoan biozone according to GTS2020 (Melchin et al. 2020), where the base of the *margaritana* Biozone is shown as correlating with a level high in the *Cyrtograptus centrifugus* graptolite Biozone (but note that *M. margaritana* was found in a Telychian upper *Oktavites spiralis* Biozone sample by Loydell and Nestor (2005) and has its FAD at the base of the *Cyrtograptus insectus* graptolite Biozone in the Banwy River section, Wales; Mullins and Loydell 2001).

Integrated stratigraphy

The current GSSP is considered to lie either at the base of, or at some level within, the *Cyrtograptus purchisoni* Biozone. Correlation of the chitinozoan biozonation at Hughley Brook with that of the Banwy River section (Mullins and Aldridge 2004) suggests a lower stratigraphical level within the graptolite biozonation (somewhere within the upper *centrifugus* to lower *purchisoni* Biozone interval, with the base of the *purchisoni* Biozone sometimes used simply for convenience/tidiness) than correlation of datum points of the

Ireviken Event conodont extinctions combined with bentonite data from the East Baltic (Männik 2007b), which suggest a level within the upper *murchisoni* Biozone. This is clearly not a satisfactory situation.

Chemostratigraphy

More research is needed on the carbon isotope excursions around the proposed level for the base of the Wenlock Series at the base of the *Cyrtograptus lapworthi* Biozone. The Sommerodde excursion (SOCIE; Hammarlund et al. 2019) in the middle *Oktavites spiralis* Biozone, which is of remarkably variable magnitude (Loydell et al. 2023), occurs below the proposed level for the base of the Wenlock Series whilst the Manitowoc excursion (McLaughlin et al. 2019) appears to occur above it (see Loydell et al. 2023).

The well-known and intensively studied ESCIE would need renaming, perhaps as MISCIE (Middle Sheinwoodian carbon isotope excursion). The onset of the excursion occurs above levels correlated with the current base of the Wenlock Series (Vandenbroucke et al. 2013) and has been dated precisely in graptolitic sections to a level high in the *murchisoni* Biozone (see Loydell and Frýda 2007, fig. 4 and Cramer et al. 2010, figs 4, 5). The ESCIE therefore has never been a chemostratigraphical marker for the base of the Wenlock Series.

Unconformities and poorly fossiliferous strata

It is often preferable to be able to place a boundary within a continuous (and continuously fossiliferous) section. In several regions a significant unconformity has been recognised between Llandovery and Wenlock strata (e.g. Bornholm, Loydell et al. 2017; Estonia, Männik et al. 2014; Latvia, Loydell et al. 2010; Spain, Loydell et al. 2009). In others (e.g. Ohesaare, Estonia, Loydell et al. 1998) it is impossible to know from the fossil content whether a cryptic unconformity is present, as the strata above the lower *lapworthi* Biozone yield only rare and often long-ranging graptolite taxa until the *Cyrtograptus murchisoni* Biozone is reached.

By contrast, the generally high sea-levels during the *Oktavites spiralis*–early *Cyrtograptus lapworthi* Biozone interval (Loydell 1998) have resulted in continuous sedimentary sequences in many places.

Conclusion

This proposal may sound like a radical step, and it will (again!) require the Llandovery/Wenlock boundary to be moved in our stratigraphical charts. Placing the boundary at the base of the *Cyrtograptus lapworthi* graptolite Biozone/*Pterospathodus amorphognathoides amorphognathoides* conodont Biozone/*Conochitina acuminata* chitinozoan Biozone does, however, offer considerable potential for long-term stratigraphical stability and precise correlation of this series boundary.

David K. Loydell

References

- Bjerreskov, M. 1975. Llandoveryan and Wenlockian graptolites from Bornholm. *Fossils and Strata*, 8, 1–94.
- Cramer, B. 2025. Working Group for the base of the Wenlock Series. *Silurian Times*, 32, 21.
- Cramer, B.D., Loydell, D.K., Samtleben, C., Munnecke, A., Kaljo, D., Männik, P., Martma, T., Jeppsson, L., Kleffner, M.A., Barrick, J.E., Johnson, C.A., Emsbo, P., Joachimski, M.M., Bickert, T. and Saltzman, M.R. 2010. Testing the limits of Paleozoic

- chronostratigraphic correlation via high-resolution (<500 ky) integrated conodont, graptolite, and carbon isotope ($\delta^{13}\text{C}_{\text{carb}}$) biochemostratigraphy across the Llandovery–Wenlock (Silurian) boundary: is a unified Phanerozoic time scale achievable? *GSA Bulletin*, 122 (9/10), 1700–1716. <https://doi.org/10.1130/B26602.1>
- Fu, L., Zhang, Z. and Geng, L. 2006. Silurian high resolution graptolite biostratigraphy and biotic recovery in Ziyang, China. Geological Publishing House, Beijing, 151 pp., 8 pls.
- Hammarlund, E.U., Loydell, D.K., Nielsen, A.T. and Schovsbo, N.H. 2019. Early Silurian $\delta^{13}\text{C}_{\text{org}}$ excursions in the foreland basin of Baltica, both familiar and surprising. *Palaeogeography, Palaeoclimatology, Palaeoecology*, 526, 126–135. <https://doi.org/10.1016/j.palaeo.2019.03.035>
- Lenz, A.C. 1978. Llandoveryan and Wenlockian *Cyrtograptus*, and some other Wenlockian graptolites from Northern and Arctic Canada. *Geobios*, 11, 623–653.
- Loydell, D.K. 1998. Early Silurian sea-level changes. *Geological Magazine*, 135 (4), 447–471. <https://doi.org/10.1017/S0016756898008917>
- Loydell, D.K. and Cave, R. 1994. Distinguishing between the graptolite biozonal indices *Cyrtograptus centrifugus* and *Cyrtograptus murchisoni*. *Paläontologische Zeitschrift*, 68 (3/4), 437–441.
- Loydell, D.K., Gutiérrez-Marco, J.C. and Štorch, P. 2023. The Sommerodde (Telychian, Silurian) positive carbon isotope excursion: why is its magnitude so variable? *Journal of the Geological Society*, 180. <https://doi.org/10.1144/jgs2023-037>
- Loydell, D.K. and Frýda, J. 2007. Carbon isotope stratigraphy of the upper Telychian and lower Sheinwoodian (Llandovery–Wenlock, Silurian) of the Banwy River section, Wales. *Geological Magazine*, 144 (6), 1015–1019. <https://doi.org/10.1017/S0016756807003895>
- Loydell, D.K., Kaljo, D. and Männik, P. 1998. Integrated biostratigraphy of the lower Silurian of the Ohesaare core, Saaremaa, Estonia. *Geological Magazine*, 135 (6), 769–783. <https://doi.org/10.1017/S0016756898001423>
- Loydell, D.K., Kleffner, M.A., Mullins, G.L., Butcher, A., Matteson, D.K. and Ebert, J.R. 2007. The lower Williamson Shale (Silurian) of New York: a biostratigraphical enigma. *Geological Magazine*, 144 (2), 225–234. <https://doi.org/10.1017/S0016756806003049>
- Loydell, D.K., Männik, P. and Nestor, V. 2003. Integrated biostratigraphy of the lower Silurian of the Aizpute-41 core, Latvia. *Geological Magazine*, 140, 205–229. <https://doi.org/10.1017/S0016756802007264>
- Loydell, D.K., Sarmiento, G., Štorch, P. and Gutiérrez-Marco, J.C. 2009. Graptolite and conodont biostratigraphy of the upper Telychian–lower Sheinwoodian (Llandovery–Wenlock) strata, Jabalón River section, Corral de Calatrava, Spain. *Geological Magazine*, 146, 187–198, <https://doi.org/10.1017/S0016756808005840>
- Loydell, D.K. and Nestor, V. 2005. Integrated graptolite and chitinozoan biostratigraphy of the upper Telychian (Llandovery, Silurian) of the Ventpils D-3 core, Latvia. *Geological Magazine*, 142 (4), 369–376. <https://doi.org/10.1017/S0016756805000531>
- Loydell, D.K., Nestor, V. and Männik, P. 2010. Integrated biostratigraphy of the lower Silurian of the Kolka-54 core, Latvia. *Geological Magazine*, 147, 253–280. <https://doi.org/10.1017/S0016756809990574>
- Loydell, D.K., Walasek, N., Schovsbo, N.H. and Nielsen, A.T. 2017. Graptolite biostratigraphy of the lower Silurian of the Sommerodde-1 core, Bornholm, Denmark. *Bulletin of the Geological Society of Denmark*, 65, 135–160. <https://doi.org/10.37570/bgsd-2017-65-09>
- Lüning, S., Loydell, D.K., Sutcliffe, O., Ait Salem, A., Zanella, E., Craig, J. and Harper, D. A. T. 2000. Silurian–Lower Devonian black shales in Morocco: which are the organically richest horizons. *Journal of Petroleum Geology*, 23 (3), 293–311. <https://doi.org/10.1111/j.1747-5457.2000.tb01021.x>

- Männik, P. 1998. Evolution and taxonomy of the Silurian conodont *Pterospathodus*. *Palaeontology*, 41 (5), 1001–1050.
- Männik, P. 2007a. An updated Telychian (Late Llandovery, Silurian) conodont zonation based on Baltic faunas. *Lethaia*, 40, 45–60. <https://doi.org/10.1111/j.1502-3931.2006.00005.x>
- Männik, P. 2007b. Some comments on Telychian–early Sheinwoodian conodont faunas, events and stratigraphy. *Acta Palaeontologica Sinica*, 46 (supplement), 305–310.
- Männik, P., Põldvere, A., Nestor, V., Kallaste, T., Kiipli, T. and Martma, T. 2014. The Llandovery–Wenlock boundary interval in west-central continental Estonia: an example from the Suigu (S-3) core section. *Estonian Journal of Earth Sciences*, 63 (1), 1–17.
- McLaughlin, P.I., Emsbo, P., Brett, C.E., Bancroft, A.M., Desrochers, A. and Vandenbroucke, T.R.A. 2019. The rise of pinnacle reefs: a step change in marine evolution triggered by perturbation of the global carbon cycle. *Earth and Planetary Science Letters*, 515, 13–25. <https://doi.org/10.1016/j.epsl.2019.02.039>
- Melchin, M.J. 1989. Llandovery graptolite biostratigraphy and paleobiogeography, Cape Phillips Formation, Canadian arctic islands. *Canadian Journal of Earth Sciences*, 26, 1726–1746. <https://doi.org/10.1139/e89-147>
- Melchin, M.J., Sadler, P.M. and Cramer, B.D. 2020. The Silurian Period. In: Gradstein, F.M., Ogg, J.G., Schmitz, M.D. and Ogg, G.M. (eds), *Geologic Time Scale 2020*. Elsevier, Amsterdam, 695–732. <https://doi.org/10.1016/B978-0-12-824360-2.00021-8>
- Mullins, G.L. and Aldridge, R.A. 2004. Chitinozoan biostratigraphy of the basal Wenlock Series (Silurian) Global Stratotype Section and Point. *Palaeontology*, 47 (3), 745–773. <https://doi.org/10.1111/j.0031-0239.2004.00387.x>
- Mullins, G.L. and Loydell, D.K. 2001. Integrated Silurian chitinozoan and graptolite biostratigraphy of the Banwy River section, Wales. *Palaeontology*, 44 (4), 731–781. <https://doi.org/10.1111/1475-4983.00200>
- Nestor, V. 2005. Chitinozoans of the *Margachitina margaritana* Biozone and the Llandovery–Wenlock boundary in West Estonian drill cores. [Proceedings of the Estonian Academy of Sciences, Geology](https://doi.org/10.3176/geol.2005.2.02), 54 (2), 87–111. <https://doi.org/10.3176/geol.2005.2.02>
- Rong, J.Y., Wang, Y., Zhan, R.B., Fan, J.X., Huang, B., Tang, P., Li, Y., Zhang, X.L., Wu, R.C., Wang G.X. and Wei, X. 2019. Silurian integrative stratigraphy and timescale of China. *Science China Earth Sciences*, 62, 89–111. <https://doi.org/10.1007/s11430-017-9258-0>
- Slavík, L., Manda, S., Štorch, P. and Tasáryová, Z. 2025. A possible GSSP for the base of the Wenlock Series – multiproxy stratigraphy and biotic response to an extinction event. *Palaeontological Publications*, 7, 115–118.
- Štorch, P. 2023. Graptolite biostratigraphy and biodiversity dynamics in the Silurian System of the Prague Synform (Barrandian area, Czech Republic). *Bulletin of Geosciences*, 98 (1), 1–78. <https://doi.org/10.3140/bull.geosci.1862>
- Sullivan, N.B., Kleffner, M.A. and Brett, C.E. 2014. Conodont biostratigraphy, paleoecology, and taphonomy of the Second Creek Bed and Wolcott Furnace Hematite (Clinton Group) in west central New York State. *Palaeontologia Electronica*, 17, 1.10A.
- Vandenbroucke, T.R.A., Munnecke, A., Leng, M.J., Bickert, T., Hints, O., Gelsthorpe, D., Maier, G. and Servais, T. 2013. Reconstructing the environmental conditions around the Silurian Ireviken event using the carbon isotope composition of bulk and palynomorph organic matter. *Geochemistry, Geophysics, Geosystems*, 14, 86–101. <https://doi.org/10.1029/2012GC004348>
- Walliser, O.H. 1964. Conodonten des Silurs. *Abhandlungen des Hessischen Landesamtes für Bodenforschung*, 41, 1–106.

Zalasiewicz, J.A., Taylor, L., Rushton, A.W.A., Loydell, D.K., Rickards, R.B. and Williams, M. 2009. Graptolites in British stratigraphy. *Geological Magazine*, 146 (6), 785–850. <https://doi.org/10.1017/S0016756809990434>

[Zhang, S. and Barnes, C.R. 2007. Late Ordovician to early Silurian conodont faunas from the Kolyma Terrane, Omulev Mountains, Northeast Russia, and their paleobiogeographic affinity. *Journal of Paleontology*, 81 \(3\), 490–512. <https://doi.org/10.1666/05077.1>](#)

RESPONSE FROM THE WORKING GROUP ON THE BASE OF THE WENLOCK SERIES

We sincerely thank Dr. Loydell for his overview of the challenges of the current base Wenlock GSSP and his intriguing proposal for a fundamental change in the chronostratigraphic position of the base of the Wenlock Series. There are currently two locations being considered for a new revised placement of a base Wenlock GSSP, one in Sweden and one in Czechia, but the points raised in this new proposal should absolutely be considered by both the working group as well as the subcommission as a whole. We look forward to discussing this alternative more broadly at the upcoming ISSS meeting at STRATI and would like to propose a potential option of three-part vote in the future that would include both the new locations as well as the third option of changing the chronostratigraphic position. We look forward to discussing this with the Silurian community this summer.

On behalf of the Base Wenlock Working Group,

Brad Cramer

ANNOUNCEMENTS OF MEETINGS AND ACTIVITIES IN 2026

STRATI 2026 – EXPLORING THE DEPTHS: BRIDGING TRADITION AND INNOVATION IN STRATIGRAPHY

Second Circular

We are excited to invite the global stratigraphy community to STRATI 2026 – Exploring the Depths: Bridging Tradition and Innovation in Stratigraphy, taking place from **June 28 to July 3, 2026**, at Suzhou in Jiangsu Province, China.

GENERAL INFORMATION

Website: <https://www.strati2026.org/>

Contact:

ykshi@nju.edu.cn for financial questions;

wkqie@nigpas.ac.cn for field excursion questions;

yghuang@cug.edu.cn for session and program questions;

ariana.xu@nju.edu.cn for registration questions;

strati2026@ddeworld.org for other general issues.

CONGRESS SCHEDULE

June 24th -28th	Pre-conference field excursions
June 28th	Onsite registration, short courses, icebreaker
June 29th -30th	Scientific symposia
July 1st	Mid-conference field excursion
July 2nd -3rd	Scientific symposia
July 4th -July 10th	Post-conference field excursions

LANGUAGE

English will be the official language of the meeting and the field trips.

SCIENTIFIC SESSIONS

General and Subcommission sessions both include oral and poster sessions, and parallel sessions will also be scheduled. The following scientific sessions have been proposed covering a wide range of stratigraphic topics (see details on the website):

General Sessions

- G1. The Long Fuse to Biological Complexity: Advances in Mesoproterozoic through Cryogenian Stratigraphy
- G2. The Middle Age Period of the Earth (1.8–0.8 Ga) —New Stratigraphic Advances, Boundary Delimitation, and Planetary Spheres Interaction
- G3. Co-Evolution of Earth and Life from the Archean to the Proterozoic
- G4. The Precambrian-Cambrian Transition: Stratigraphic Record, Biological Evolution and Environmental Changes
- G5. The Palaeozoic World: Events that Shaped Life
- G6. Integrative Stratigraphy and Earth System Interactions Across the Permian-Triassic Transition
- G7. Mesozoic Timescale Calibration
- G8. Late Holocene to Anthropocene Transformations
- G9. Cenozoic Terrestrial Biostratigraphy and Mammalian Evolution

- G10. Novel Isotope and Elemental Geochemical Proxies for Phanerozoic Stratigraphy and Ocean Chemistry Reconstructions
- G11. From the Paleotethys to the Neotethys: Insights into the Stratigraphic and Paleogeographic Evolution of the Tethys Ocean Realm
- G12. Cyclostratigraphy and Its Applications in Geochronology and Paleoclimatology
- G13. Understanding Mass Extinctions and Environmental Changes through Geological Time: Causes and Effects
- G14. The Stratigraphy of "Events" in Earth History
- G15. Trace Fossils as Indicator of Major Global Events and Regional Key Stratigraphic Surfaces
- G16. GSSP Proposals to Complete the Time Scale: Problems and Solutions
- G17. Quantitative Stratigraphy: Concepts, Principles, Methods and Applications
- G18. Recent advances in the Cretaceous-Paleogene stratigraphy and Earth system evolution of the Tethyan realm

Subcommission Sessions

- S1. Towards Subdivision of the Ediacaran System into Meaningful Stages and Series
- S2. Ordovician Stratigraphy, Ecosystem and the Habitability Evolution
- S3. Integrated Stratigraphy of the Silurian to Reconstruct Ancient Earth
- S4. Multidisciplinary Studies on Devonian
- S5. Journey to the Carboniferous
- S6. Perspectives on Permian Stratigraphy
- S7. Triassic Horizons: Multidisciplinary Approaches to Crises, Correlation and GSSPs
- S8. Tropical Seaways Through Time: Stratigraphic, Tectonic and Paleooceanographic Evolution from the Jurassic to the Neogene
- S9. Recent Advances in Jurassic Stratigraphy
- S10. Marine and Non-Marine Cretaceous Stratigraphic Correlation: New Advances and Integrated Stratigraphy for Palaeoenvironmental Reconstruction
- S11. Rapid and Gradual Global Changes: the Paleogene vs. Other Stratigraphic Intervals
- S12. Advances in Neogene Stratigraphy and Astrochronology, and the Functioning of Its Earth System
- S13. Climate Changes, Terminations, and Thresholds: Stratigraphic Markers in the Quaternary Record
- S14. 'GTS2030' – Toward an Open Science Geologic Time Scale

Workshops

- W1. A Billion-Year Odyssey of the Earth's Middle Age: New Advances in the Statherian-Tonian Multi-Stratigraphy, Global Correlation and Basin Dynamics
- W2. Triassic GSSPs and the Candidates (post-conference field workshop)

Short Course

Stratigraphic forward Modeling: Testing Hypotheses in Carbonate Stratigraphy

Depending on the number of oral presentations proposed, it is possible that the session organizers and the organizing committee may request poster presentations instead of oral presentations.

For abstract submission, please, visit the conference website: <https://strati2026.org/>

FIELD EXCURSIONS

The following excursions are scheduled (**Please purchase insurance in advance at your own expense**):

Pre-conference Excursion

PF1. Critical stratigraphic boundary intervals in Yunnan Province, SW China (5500 RMB)

PF2. Late Paleozoic to earliest Mesozoic stratigraphy and faunas in Guizhou, South China (3400 RMB)

PF3. The Yanliao and Jehol biotas in North China (4500 RMB)

PF4. Mesoproterozoic successions in Jixian area, Tianjin City, North China (3300 RMB)

Mid-conference Excursion

MF1. Meishan section and Meishan Geopark (800 RMB)

MF2. Tai Lake Xishan Section (800 RMB)

MF3. Ordovician to Silurian strata and Anji Biota in the Anji, Zhejiang (800 RMB)

Post-conference Excursion

POF1. The Cryogenian-Cambrian stratigraphy and biotas in Guizhou and W. Hunan, SW China (7500 RMB)

POF2. From Snowball Earth to Great Mass Extinction: Ediacaran to Triassic Stratigraphic Records in the Three Gorge area, central China (6000 RMB)

POF3. Linxia Basin and Loess in North China (4000 RMB)

POF4. Mesoproterozoic, Cambrian and terrestrial Permian-Triassic successions in the Yuntai Mountain-Shaolin Temple areas, Henan Province, central China (3500 RMB)

POF5. Upper Devonian to lowest Carboniferous successions in Guilin Karst area, Guangxi, South China (4000 RMB)

Post-conference Field Workshop

W2. Workshop on Triassic GSSPs and the candidates (800 RMB)

SOCIAL ACTIVITIES AND CONFERENCE DINNER

Social activities include the icebreaker party and reception on Sunday June 28, as well as paid sightseeing for surrounding attractions (run by tour company).

The conference dinner will be organized on Tuesday, June 30, at the venue with traditional Chinese performances.

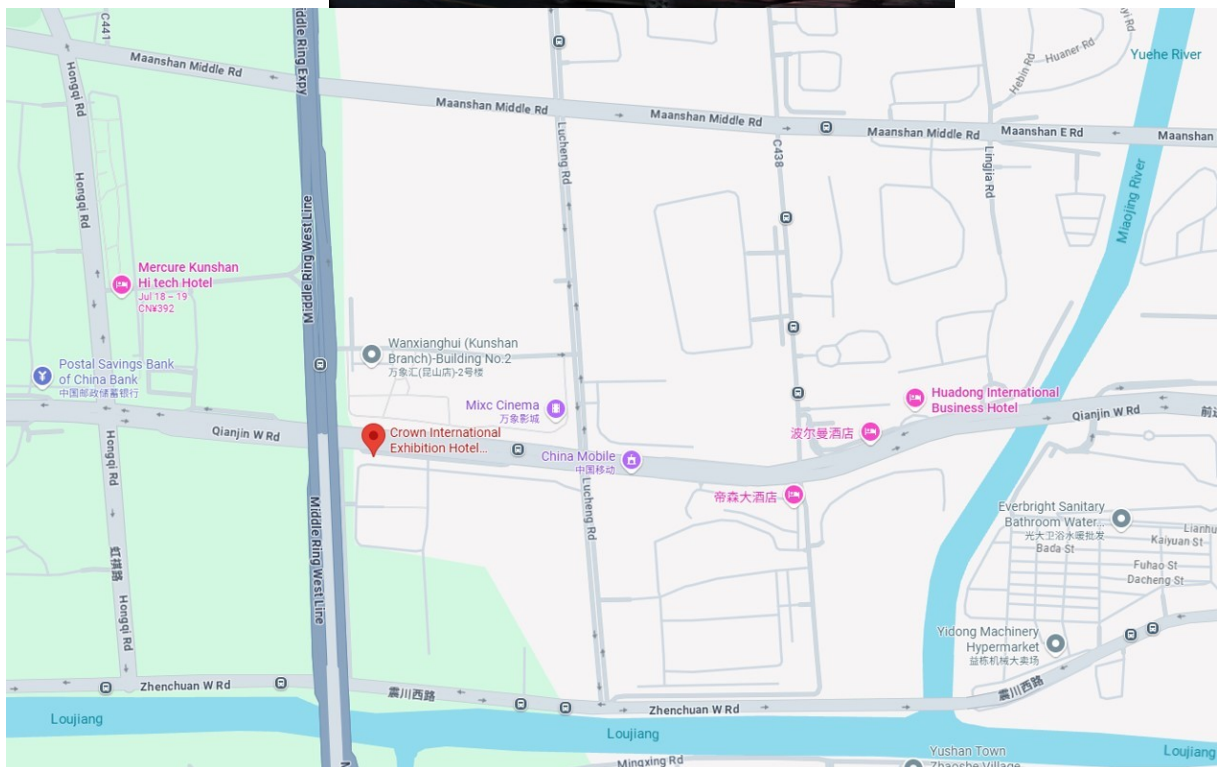


VENUE

Kunshan Crown International Exhibition Hotel 昆山皇冠国际会展酒店

Nestled at No. 1277 Qianjin West Road, Kunshan of Suzhou, Jiangsu Province, Kunshan Crown International Exhibition Hotel stands as a comprehensive landmark integrating grand exhibitions, conferences, accommodation, dining, and leisure. This architecturally distinctive complex comprises a 32-story main building, boasting a total construction area of 145,000

square meters. This hotel boasts 680 standard double/twin rooms and ~10 deluxe suite rooms. Several other surrounded hotels can also provide ~1000 rooms.



Venue location in the local map

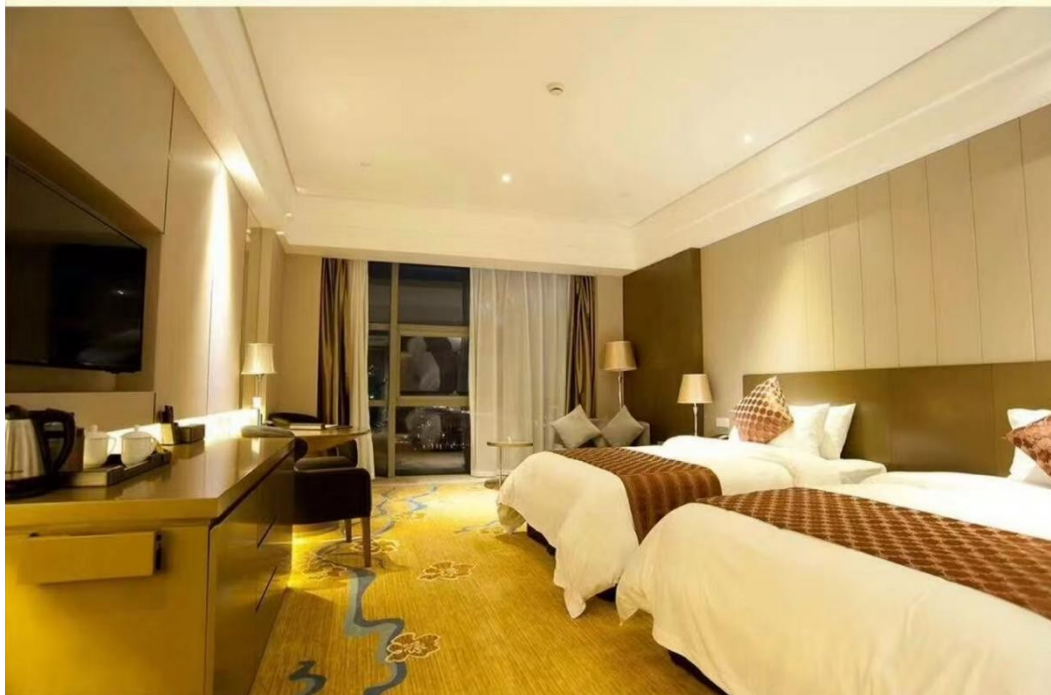
ACCOMMODATIONS

Standard rooms in the same hotel with Strati (Kunshan Crown International Exhibition Hotel)

Double / twin room price: 380 RMB (~54 \$)

In total 680 rooms for the conference have been secured as above price, on a first-come, first-served basis. All rooms are equipped with air conditioning and a desk. The accommodation offers a fitness center, two onsite restaurants and free WiFi.

Students' accommodations in the hotels nearby



Huaqi Hotel: standard room 130 RMB (~19 \$, 1km to the venue)



ChenRan Hotel: standard room 150 RMB (~21 \$, 800m to the venue)



All rooms are equipped with air conditioning.
More details will be updated on the website.

TRAVEL

There are lots of direct flights from European, North American, Oceanian and African countries to Shanghai Pudong or Hongqiao airports (details on the Strati 2026 website), and

Suzhou is next to Shanghai and has direct trains and buses access to the Shanghai Hongqiao airport (there are airport shuttle bus or Shanghai Suburban Railway Airport Link Line between Pudong and Hongqiao airports). **Shuttles will be arranged between Shanghai airports and conference venue on June 28th and July 3rd (the service can be booked with online registration).** It takes half hour from the Hongqiao airport to Suzhou. More details on the Strati 2026 website.

VISA

Under China's current policies, citizens from **86 countries** can travel to China visa-free for up to 30 days. Additionally, citizens from **10 countries**, including European and American nations, are subject to a 10-day visa free transit policy (see details on the Strati 2026 website). Invitation letter will be provided upon request.

REGISTRATION AND FEES

Early-bird registration: 2000RMB(~290\$) (professional), 1600RMB(~230\$) (retired professional), 1200RMB(~180\$) (students) **【January 31st - March 15th, 2026】**

Standard registration: 2900RMB(~420\$) (professional), 2200RMB(~320\$) (retired professional), 1500RMB(~220\$) (students) **【March 16th - June 27th, 2026】**

Onsite registration: 3300RMB(~480\$) (professional), 2500RMB(~360\$) (retired professional), 1800RMB(~260\$) (students) **【June 28th, 2026 -】**

Registration fee including icebreaker, lunch, hard copy program, digital proceedings and a bag.

Accompanying person: 1000 RMB (~150\$), access to icebreaker, lunch and a bag.

IMPORTANT DATES

Dispatch of second circular: December 31st, 2025

Deadline for abstract submission: March 15th, 2026

Opening abstract submission: December 31st, 2025

Deadline for early bird registration: March 15th, 2026

Opening registration: January 31st, 2026

Dispatch of third circular: May 30th, 2026

FEE PAYMENTS

All fees in Strati 2026 shall be paid based on the RMB amount; the USD amount is for reference only.

ISSS MEETING 2027

San Juan, Argentina, July 2027

On behalf of the Organizing Committee, it is with great pleasure that we invite you to Argentina for the 2027 meeting of the International Subcommission on Silurian Stratigraphy (ISSS), to be held in the province of San Juan in July 2027.

The ISSS 2027 Meeting will feature nearly three days of scientific sessions, followed by two days of post-meeting field excursions. The scientific program will include oral and poster sessions, and the ISSS business meeting. The field trips will explore the Lower Paleozoic sedimentary successions of the Precordillera, a region internationally renowned for its thick siliciclastic sequences and exceptionally rich Silurian fossil record.

After over 20 years, the ISSS Meeting returns to South America, representing a significant milestone in the history of the ISSS and an excellent opportunity to strengthen international scientific cooperation in the field of geosciences.





Panoramic view of the Silurian siliciclastic succession of the La Chilca and Los Espejos formations at the Cerro del Fuerte and Ancha creek sections.

The San Juan Province is an inviting region at the west of Argentina, located at the foot of the Andes. It's characterized by semi-arid climate with unique landscapes of deserts, mountains and valleys. San Juan City stands out for its rich and varied cultural offerings, with wide variety of museums, theaters, and the famous Wine Route, renowned for its high-quality wines. The city offers a wide variety of hotels and rooms/apartments and is easily accessible internationally, via direct flights from Buenos Aires or buses from Mendoza Airport.

The first circular, with the precise dates of the meeting and more information will be distributed in May - June 2026.

We look forward to welcoming you to San Juan.

Ana Mestre

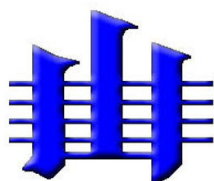
GTS2030 – DEFINING THE FUTURE OF TIMESCALE CALIBRATION

Geological Society of America Penrose Conference 2026

Second Circular



May 30th – June 5th, 2026
Iowa City, Iowa, U.S.A.



We are pleased to announce the 2026 GSA Penrose Conference will be held in Iowa City, Iowa, hosted by the International Subcommission on Timescale Calibration (ISTC). Please join us for a week of posters, presentations, and panel discussions on the future of timescale calibration as we officially kick off activities for the creation of the Geologic Time Scale 2030 (GTS2030). The meeting is limited to 90 participants and financial assistance to attend is widely available.

Meeting includes an icebreaker event the evening of the 30th, five days of meetings and panels to discuss the present and future of the GTS, and an additional field trip day included to view the spectacular Devonian-Carboniferous boundary sections in southeastern Iowa. Full meeting registration costs include icebreaker, conference banquet, field trip, and meeting registration.

Registration costs (not including housing, meals, or travel) are currently estimated at \$350 per person for the week-long event.

Application and registration

GSA and the conveners are committed to fostering an inclusive and diverse community of researchers engaged in geologic timescale development. We welcome interest from individuals

of all backgrounds, and we particularly encourage participation from students, postdoctoral scholars, and early career faculty.

A total of 90 participants will attend this meeting including keynote addresses and invited lectures from members of many subcommissions of the International Commission on Stratigraphy. The meeting is formally hosted by the International Subcommission on Timescale Calibration, and students and early-career scientists are strongly encouraged to apply to attend. Priority for attendance and financial support will be given to rising early-career scholars. We welcome applications from practitioners of any discipline or sub-discipline within geoscience for whom the GTS is a critical component. Accepted participants will be notified following review by the conveners.

Application

Penrose Conferences require an application to attend due to the limited space for participation (90 total participants). If you are interested in attending, please complete the application form at the GSA website below by **January 30th**.

<https://www.geosociety.org/GSA/GSA/penrose/current.aspx>

Participation in Penrose Conferences is intentionally limited to foster deep scientific discussion and collaboration. Applications to attend the meeting and for financial support will be followed by the abstract and registration deadline.

Key dates

- Applications Open: 8 December 2025
- Application Deadline: 30 January 2025 (*May be Extended*)
- Acceptance Letters Sent & Registration Opens: 14 February 2026
- Abstract and Registration Deadline: 6 March 2026
- Cancellation Deadline: 30 April 2026
- Conference Dates: 30 May–5 June 2026

Meeting plan

The meeting will take place on the campus of the University of Iowa. Participants will fly in and out of the Cedar Rapids/Eastern Iowa airport (Airport Code CID). A block of rooms for the meeting has been secured at the Graduate Hotel by Hilton, in Iowa City for the event. This hotel is a few blocks from the meeting venue and options for both single and double occupancy are available. The preliminary schedule for the meeting is as follows, but will be finalized once all registration and abstract submission is complete.

May 30th: Participants arrive and PM icebreaker
May 31st: Day one – Stratigraphy and GSSPs – Conference Banquet in evening
June 1st: Day two – Geochronology and Numerical Time
June 2nd: One Day Field Trip to Devonian-Carboniferous Boundary Strata in Iowa
June 3rd: Computational Stratigraphy and Big Data
June 4th: Current Challenges of the Subcommissions
June 5th: Numerical Calibration of the Timescale & GTS2030 – Close of meeting in evening
June 6th: Participants Return Home

Registration fees include the cost of attendance at the meeting, the icebreaker, the conference banquet, the field trip (including lunch that day), as well as snacks and drinks each day. Participants are responsible for their own meals as well as their lodging during the meeting.

Financial assistance

Generous financial support for participants is available from the Geological Society of America (GSA), the US National Science Foundation (NSF), the International Commission on Stratigraphy (ICS), and the International Union of Geological Sciences (IUGS). When you complete your application form, please indicate what level of support you will require for attendance. The conveners will do everything possible to provide financial support for participants, particularly for students and early-career scientists who are attending the meeting.

We look forward to seeing you all in Iowa City this summer!

Brad, Mark, and Anne-Christine



First Circular

University of Montpellier, France

October 27–29, 2026

Invitation

We are pleased to invite you to ECOS 2026, a European symposium dedicated to conodonts and all aspects of related research. In addition to the classic topics (taxonomy, stratigraphy, etc.), presentations on geochemistry and geometric morphometrics are particularly welcome.

The conference will take place in Montpellier, France (www.umontpellier.fr) from October 27 to 29, 2026. The meeting will begin on Tuesday afternoon, continue on Wednesday, and conclude late Thursday morning. Scientific contributions will include oral presentations and poster sessions.

Committees

Scientific Committee

Catherine Girard

Pauline Guenser

Emilia Jarochovska

Alexandre Assemat

Carlo Corradini

Organizing Committee

Catherine Girard

Pauline Guenser

Emilia Jarochovska

Sylvain Adnet

Anne-Lise Charruault

Pre-registration

Please complete the pre-registration form (<https://framaforms.org/ecos-2026-1771417570>) to help us to estimate the attendance and define the financial contribution requested from each person. Our goal is to keep fees as low as possible and encourage the participation of young scientists with discounted rates.

The financial contribution required of each participant will cover the membership in the Palaeovertebrata association (www.palaeovertebrata.org), which will handle the financial aspects of the conference. Participation in the conference gala dinner is not included and will incur an additional cost.

The financial contribution and the cost of the gala dinner will be communicated in the second circular.

Important Dates

April 2026 – Opening early registration
 First week of June 2026 – Second circular & abstract submission
 September 10, 2026 – Abstract & registration deadlines
 September 15, 2026 – Notification of acceptance
 October 1, 2026 – Final program

Tentative schedule

Tuesday, October 27, 2026		Wednesday, October, 2026		Thursday, October 29, 2026	
		9pm-9:30pm	Invited Conference	9pm-10:30pm	Sessions
		9:30pm-10:30pm	Sessions		
		10:30-11:00pm	Coffee Break / Posters	10:30-11:00pm	Coffee Break
11am - 12:30	Registration	11:30-12:30	Sessions	11:30-1:00pm	Discussions*
12:30-1:00pm	Ice Breaker Party	12:30-2:00pm	Lunch		
1:00pm-2:20pm	Opening ceremony	2:00-4:00pm	Sessions	1:00pm	Closing ceremony
2:20pm-4:00pm	Sessions		Sessions		
4:00pm-4:30pm	Coffee Break	4:00pm-4:30pm	Coffee Break / Posters		
4:30pm-6:00pm	Sessions	4:30pm-6:00pm	Sessions		
6pm-6:30pm	Posters	6:00-6:30pm	Posters		
		8:00pm	Conference dinner		

*discussions about ECR (non) permanent opportunities

*discussions about the review paper

We look forward to welcoming you to Montpellier!

JOB OPPORTUNITIES

FRQ Research Chair in Ordovician Mass Extinction and Palaeoenvironments (Anticosti Island, Canada)

The University of Laval in Quebec City, Canada, will shortly begin accepting applications for a tenure-track Research Chair in the End-Ordovician Mass Extinction and Palaeoenvironments associated with the Fonds de recherche du Québec (FRQ). This research program will be based on the exceptional geological and fossil history of Anticosti Island, a UNESCO World Heritage Site. It aims to create interdisciplinary collaboration in the fields of stratigraphy, sedimentology, paleontology, and geochemistry, as well as related fields.

The University of Laval is about to release an official call for applications. This communication is only to inform you that at this time, details about the job description, application process, and other requirements are not yet available. The University of Laval will release further details via its official channels in the near future. If you are part of the Ordovician-Silurian community and are interested in this position, please contact: Scientific Director, Société du patrimoine mondial Anticosti (Dr André Desrochers adesro@uottawa.ca) — for information on the scientific context, research opportunities and site infrastructure.

Further information will be shared in due course.



Aerial view of coastal cliffs and rocky shoreline at low tide along the western side of Anticosti (Cap-Aux-Anglais), Anticosti Island, Québec, Canada, showing well-exposed strata of the Ordovician–Silurian boundary interval within the Anticosti World Heritage Site.

Credit: Pascal Bernatchez (UQAR).

OBITUARIES

ANTHONY (TONY) WRIGHT

20th July 1937 – 7th July 2025



Tony Wright died suddenly and unexpectedly at his home in Wollongong, New South Wales, at the age of 87, cutting short a productive and scholarly career. He was a highly regarded palaeontologist who studied fossils from the Ordovician, Silurian & Devonian Systems mainly in Australia and New Zealand, and to a lesser extent in Iran, France and Belgium. His research predominantly focussed on studies of rugose and tabulate corals, trilobites, brachiopods, and graptolites. He was a world-leading specialist in a group of operculate calceoloid corals of Silurian and Devonian ages.

Tony commenced geological studies at the University of Sydney in 1957, completing his B.Sc (Hons) in 1960 supervised by the late Gordon Packham. From 1962-1965 he embarked on a Ph.D (also under Gordon's supervision) which was conferred in 1966 for his thesis project on the Devonian coral and brachiopod faunas of the Mount Frome area near Mudgee in NSW.

Tony's first academic role was a Lecturer in Geology at Victoria University of Wellington, New Zealand from January 1966 – December 1969. He then briefly joined the teaching staff of Oregon State University in Corvallis (USA), before returning to Australia in early 1971 to take up a Lectureship at the University of Wollongong where he remained for the rest of his career. He was subsequently promoted to Senior Lecturer and then Associate Professor before retiring in 1997. His research then continued as an Honorary Principal Fellow with the University and also as a Research Affiliate of the Australian Museum. In 2000, he was appointed as a Fellow of Emmanuel College at Cambridge which he remained until his death.

Tony published 95 refereed papers, monographs, edited books, and chapters contributed to books. His research on Silurian graptoloids and dendroids from NSW over 15 years between 1995 & 2010 was undertaken in collaboration with the late Professor Barrie Rickards of Cambridge, with whom he wrote nearly one-quarter of all his papers; this productive research partnership (which only ceased with Barrie's untimely death) advanced the study of Silurian representatives of this group in Australia more than anyone previously.

His other studies on Silurian topics included the first papers (1970, 1972) recognising Silurian rocks and fossils in New Zealand, publications with Ross McLean on rugose corals from NSW (2021, 2022), as co-author of two papers describing Silurian trimerellid brachiopods from NSW (1998, 2005), as well as several publications on Silurian rhynchonelliform brachiopods from Australia (1991, 2004, 2013).

With his knowledge of both Australian and New Zealand geology, Tony was a strong supporter of Australasian palaeontological research. He was a long-term member of the Association of Australasian Palaeontologists (AAP) from 1975 up to his death and served for five years from 2001-2006 as the Editor of *Alcheringa* – the Australasian journal of palaeontology – continuing his association with the journal as editorial advisor from 2007-2010. He was also active in local scientific societies, particularly the Linnean Society of NSW (joining the Council in 1974, serving as President in 1982, and was subsequently Vice-President for several years until retiring from the Council in 1987).

He was well-known internationally as the primary organiser of a conference at the University of Wollongong in 1999, on Palaeobiogeography of Australasian Faunas and Floras. Subsequently he was the lead author (along with the late John Talent, Gavin Young and John Laurie) of the widely-cited 'PAFF volume' (an AAP Memoir) with the same title as the conference. This book stands as a monumental work summarising information on all the then-known biogeographically-significant fossils from all parts of the Phanerozoic geological history of Australia and New Zealand (bar the Triassic). It remains the go-to reference book for overseas geoscientists seeking basic information on the stratigraphic distribution of Australasian fossils.

Tony was an inspirational teacher and mentor to many students at the University of Wollongong. He was held in high regard by all his colleagues around the world and was active in research right up to the time of his death (two posthumous papers are currently in press); his passing is a great loss to Australian palaeontology.

Ian Percival

SILURIAN RESEARCH 2025: NEWS FROM THE MEMBERS

(in alphabetical order)

GUDVEIG BAARLI

Williams College, Department of Geosciences, Wachenheim Science Center, 18 Hoxsey Street, Williams College, Williamstown, MA 01267, USA. Tel. 14135972329, Email: gbaarli@williams.edu

Publications

Baarli, B.G. and Jin, J., 2026. Hirnantian progenitor of the early Silurian pentameride brachiopod *Stricklandia* lineage. *Paleoworld*, 35, 201038.

<https://doi.org/10.1016/j.palwor.2025.201038>

ALYSSA BANCROFT

300 Trowbridge Hall, Iowa City, Iowa 52242, United States of America, Tel. +1(231)881-0533

Email: alyssa-bancroft@uiowa.edu

Via the USGS STATEMAP Program, mapping efforts in Iowa continue, some of which are focused on the Silurian succession; working with a few graduate students on chronostratigraphic projects focused on the Silurian System; and participating in the Base Wenlock Working Group.

CHRISTOPHER BARNES

University of Victoria, School of Earth and Ocean Sciences, P.O.Box 3065 STN CSC, SEOS, University of Victoria, Victoria, BC V8W 3V6, Canada; Tel. +1-250-920-8382 (cell/mobile)
Email: crbarnes@uvic.ca

Slowly continuing/completing my conodont paleontology/stratigraphy/isotope geochemistry research. The main projects being: a) new studies of Ca and Sr non-radiogenic isotopes to investigate causal factors for the Late Ordovician-Early Silurian mass extinction (with Manuel Rico and Annalisa Ferretti), and b) Ordovician and Silurian conodont biostratigraphy, bioevents, eustasy and thermal maturation, mainly for Laurentia. My career's collection of conodonts in 43 microfossil cabinets was donated to, and archived by, the Geological Survey of Canada in Calgary, Alberta.

JAMES BARRICK

Department of Geosciences, Texas Tech University, 79409, USA, Tel. +1 806 441 9185
Email: jim.barrick@ttu.edu

Mostly retired, but finishing up some research on Silurian conodonts.

CARLTON BRETT

Department of Geosciences, University of Cincinnati, Cincinnati, OH 45221-0013, Tel. +1 513 556-4556

Email: carlton.brett@uc.edu

Although I am primarily involved in research on Ordovician of the Cincinnati Arch-Nashville Dome, my students and I have continued substantial research in the Ordovician-Silurian boundary strata of eastern North America.

A) Research on Ordovician-Silurian Boundary Sequence and Chemostratigraphy and Conodont Biostratigraphy

Our research on the late Katian, Hirnantian, and early Silurian strata of eastern Laurentia continued in 2025. A paper on new evidence of Hirnantian strata (some previously attributed to lower Silurian), biostratigraphy faunas in Ohio, Indiana, and Kentucky partly resulting from a dissertation by former PhD student Cole Farnam (presently with Nanoscience Technology), present student, Lincoln Shoemaker, Dr. Jisuo Jin (Western Ontario University, London, Ontario), Dr. Robert Elias (University of Manitoba) and Chris Waid (Ohio Geological Survey) was just published in January (Farnam et al., 2026). This paper, intended as the first of a series on these strata and faunas, we document newly discovered fossiliferous outcrops as well as previously known sections and summarize sequence stratigraphic, biostratigraphic, and carbon isotopic evidence that these record latest Hirnantian time. Discussion is particularly aimed at providing an updated sequence stratigraphy for eastern North America across the Hirnantian to Rhuddanian interval and the implications for latest Ordovician to early Silurian sea-level. This study also gives some new insights into the immediate post-extinction faunas.

In addition, a report on stratigraphic distribution of conodonts and amended conodont zonation of the uppermost Hirnantian-Rhuddanian-early Aeronian in the Cincinnati Arch, by Christopher Waid of the Ohio Geological Survey and several colleagues has been accepted for publication early in 2026 (Waid et al., 2026). This work provides an update of conodont zonation across the Ordovician-Silurian boundary in eastern North America and has implications for the stratigraphic placement of that boundary in cratonic successions for which graptolite data are lacking.

B) Silurian Ironstones in central New York

Clinton, NY is a classic area for Silurian Clinton iron ore deposits (fossils and little ooids composed of red hematite in beds up to 2-m thick); up through the mid 1930s these deposits were mined and smelted at Clinton; later after these deposits were no longer economical for steel-making they were still quarried in pits for making red pigments for paints that adorn so many barns in upstate New York and New England. I have always been fascinated by these iron oxide beds and with my former student Dr. Nick Sullivan (MS 2013, presently instructor at SUNY College at Buffalo) have studied and correlated these beds with similarly persistent iron ore deposits in Ohio and Kentucky. We presented an updated synthesis of the Clinton iron ores (Sullivan and Brett, 2025) and their widespread correlation and ran a field conference trip for the Centennial Meeting of the New York State Geological Association in September highlighting the stratigraphy and field observations on these fossiliferous ironstones. We debated two models for their formation: a) oxidation of dissolved ferrous iron from deeper basinal anoxic sources per McLaughlin et al. (2012, *Palaeo-3*) and b) oxidation of dissolved iron input from weathered source areas at the interface between anoxic lagoonal sediments and offshore shoals. The jury is out on these models.

C) Marine Bioevents through the Phanerozoic

At the invitation of Prof. Annalisa Ferretti (University of Modena and Reggio Emilia) I devoted considerable literature research this past year to provide for a special issue of *Palaeogeography, Palaeoclimatology, Palaeoecology* on the nature of the stratigraphic record (Brett and Zambito, 2026). Dr. James Zambito (Beloit College) and I developed a rather comprehensive review of Phanerozoic bioevents ranging from local obrution deposits, to faunal epiboles and migrational events, to global bioevents of mass extinction and abrupt

evolutionary radiation. This article, following on the seminal works of Otto Walliser, was published on-line in December formally published in early 2026. We provide a summary of events in each geologic system/period and summarize some qualitative hypotheses to account for the extreme variability of bioevent frequency through time including documentation of timing relative to C isotopic excursions on a series of diagrams adapted with permission from Cramer and Jarvis (2020) in the GTS 2020, as an Appendix. The Silurian stands out as having one the largest number of named bioevents per unit time in the Phanerozoic underscoring the volatility of this time. The causes of the enhanced bioevent volatility in the Silurian Period-remain obscure but recent findings, linking bioevents with interval of abrupt climate change possibly triggered by massive volcanic eruptions (LIPS), provide fruitful ground for further research. We hope that this summary will stimulate further research on bioevents, in general, and on the causes of their varying frequency and intensity through time.

Publications

BRETT, C. E., IVANY, L.C., ZAMBITO, J.J., WELYCH-FLANAGAN, M., AND BAIRD, G.C., 2025. Stasis and faunal overturn in ancient marine communities: Punctuation and evolution on the periphery. *Paleobiology* 51 (40) 777-798.

<https://doi.org/10.1017/pab.2025.10052>.

BRETT, C.E. AND ZAMBITO, J.J. 2026. Phanerozoic Marine Bioevents: A Review with Applications to Stratigraphy and Earth History. *Palaeogeography, Palaeoclimatology, Palaeoecology* v. 688 (Published on-line December 2025)

SONG, Y., ALGEO, T.J., BRETT, C., LIU, Z., AND XIE, S. 2025. Molecular indicators of microbial community change linked to salinity variation and terrestrial inputs during the Ordovician-Silurian transition (east-central USA). *Chemical Geology* 681. 122724.

<https://doi.org/10.1016/j.chemgeo.2025.122724>

THOMKA, J. R., BRETT, C.E., BISSETT, D.C. AND SMULLEN, S. F. 2025. Overgrowth of parasitic pits in Eucalyptocrinites (Echinodermata: Crinoidea) by encrusting bryozoans: A novel Silurian skeletobiontic association. *Historical Biology*. DOI: 10.1080/08912963.2025.2550428

Guidebook

SULLIVAN, N. AND BRETT, C.E., 2025. Clinton Ironstones of the Silurian in their type area of central New York. In Tewksbury, B. and Bailey, D.G., Eds., *New York State Geological Association Centennial Field Trip Guidebook*, Clinton, NY. B3-1 to B3-

CHEN ZHONGYANG

Department of Micropalaeontology, Nanjing Institute of Geology and Palaeontology, Chinese Academy of Sciences, 39 East Beijing Road, Nanjing 210008, PR China; Tel: +86 25 83284304

Email: zychen@nigpas.ac.cn; jeffchancy@126.com

I have been working on Silurian conodonts and stratigraphy. In 2025, I attended the IGCP 735 regional meeting in Llandrindod Wells (Wales) and gave an oral presentation entitled “First documentation of early Silurian conodonts from western Thailand: Geological implications”. I attended the IGCP 735 annual meeting in Changsha (China) and the ICPSEA 2025 in Mahasarakham (Thailand), and gave the oral presentations entitled “Ordovician and Silurian conodonts in western Thailand”.

Publications

- Chen, Z.Y., Thassanapak, H.*, Li, W.J., Wu, X.J., Udchachon, M., Fang, X., Burrett, C., 2025. First documentation of early Silurian conodonts from western Thailand and its geological implications. *Journal of Palaeogeography*, 14(1): 157-171. <https://doi.org/10.1016/j.jop.2024.08.010>
- Yu, S.Y., Wang, S.X., Chen, Z.Y., Kershaw, S., Munnecke, A., Liu, S.S., Deng, X.J., Guo, W., Mao, Y.Y., Wang, Y., Li, Q.J.*, 2025. Carbon isotope stratigraphy of early Silurian carbonate rocks from the South China Block: Implications for dating post-Ordovician reef recovery. *Palaeogeography, Palaeoclimatology, Palaeoecology*, 678: 113247. <https://doi.org/10.1016/j.palaeo.2025.113247>
- Zhang, X.L., Rong, J.Y.*, Tang, P., Zhan, R.B., Wang, Y., Chen, Z.Y., Zong, R.W., Huang, B., Wei, X., 2025. The first set of Silurian marine red beds in South China: Spatiotemporal distribution, diachronism and paleogeographic significance. *Science China Earth Sciences*, 68(8): 2527-2544. <https://doi.org/10.1007/s11430-024-1606-2>

CARLO CORRADINI

Dipartimento di Matematica e Geoscienze - Università di Trieste, Via Weiss 2 - 34128 Trieste (Italy), Email: ccorradini@units.it, Tel. +39 040 5582033

My work on Silurian conodonts and biostratigraphy continues. Most of the researches were devoted to the Carnic Alps, where I am investigating the Pre-Variscan Sequence (Upper Ordovician-lower Carboniferous). Studies on Silurian and Lower Devonian mainly focus on "Orthoceras limestones" and calcareous levels within black shales sequences, both studying new sections and updating data from classical localities. Among other topics, a paper on abundant and diverse microfauna from the Llandovery/Wenlock of Monte Cocco area has been published (Ferretti et al., 2025). Studies of trace fossils, palynomorphs and stable isotopes in the Cellon section are in progress with various colleagues.

In Sardinia research focuses on the Ockerkalk limestones: a paper on the revision of the huge conodont collection from several sections has been published (Corriga et al., 2025), and a comprehensive study of mineralogy, facies analysis, and stratigraphy is in progress.

The conodont association from a Telychian black shales in Czechia was published (Strossova et al., 2025; investigation of the Silurian of Tuscany is in progress (with A. Spina and others), and a new Pridoli conodont zonation globally usable will be published soon (with M.G. Corriga and L. Slavik). Taxonomical studies on late Silurian conodonts are in progress (with M.G. Corriga).

Publications:

- Corriga M.G., Corradini C. & Ferretti A., 2025. Upper Silurian conodonts from the Ockerkalk limestone of southeastern Sardinia, Italy. *Bulletin of Geosciences*, 100, 445-487. DOI: 10.3140/bull.geosci.1930
- Ferretti A., Corriga M.G., Cavalazzi B., Desogus S., Franchini C., Malferrari D., Ongari C., Zocchi C. & Corradini C., 2025. Unique fossil preservation in ferruginous deposits from the Silurian of the Carnic Alps, Italy. *Bulletin of Geosciences*, 100, 661-676. DOI: 10.3140/bull.geosci.1926
- Gutiérrez-Marco J.C., Corradini C., Corriga M.G., Romero S. & Štorch P., 2025. Palaeontological characterization of the youngest Silurian strata from the Western Iberian Cordillera (Bádenas Formation, Nevera Inlier, NE Spain). *Palaeontological Publications*, 7, 55-64. ISBN 978-84-09-76490-7
- Lorenzo S., Corradini C., Corriga M.G. & Gutiérrez-Marco J.C., 2025. Additional Pridoli conodont association from the Obejo-Valsequillo Domain (Villaharta, province of Córdoba, SW Spain). *Palaeontological Publications*, 7, 67-71. ISBN 978-84-09-76490-7

Strossova Z., Corradini C. & Corrigan M.G., 2025. The first documented co-occurrence of conodonts and graptolites in Silurian (Telychian) black shales of the the Prague Synform, Czech Republic and its stratigraphical and palaeoecological significance. *Swiss Journal of Palaeontology*, 144, 79. DOI:10.1186/s13358-025-00416-y

Abstracts:

Capezzuoli E., Spina E., Brogi A., Degl'Innocenti N., Ronchi A. & Corradini C., 2025. Re-assessing Paleozoic stratigraphy by using palynology: the case of the Southern Tuscany (Central Italy). *GeoTolosa abstract book*, 49.

Corradini C., Capezzuoli E., Corrigan M.G., Degl'Innocenti N., Ronchi A., Scarani R. & Spina A., 2025. The Silurian of Tuscany (Italy) in a palaeogeographic context. *Palaeontological Publications*, 7, 33-34. ISBN 978-84-09-76490-7

Corradini C., Corrigan M.G. & Slavík L., 2025. A step forward towards a Přídolí conodont zonation (late Silurian). In: León-Caffroni M.A., Wilner E. & Scmazzon A.K. (Eds), *Pander Society Sixth International Conodont Symposium, Mafra-Brazil 7-10 December 2025 Abstract Book*, 24-26.

Corradini C., Corrigan M.G. & Pondrelli M., 2025. The Cardiola Formation and the Lau event in the Ludfordian (Silurian) of the Carnic Alps, Austria and Italy. *Palaeontological Publications*, 7, 35-36. ISBN 978-84-09-76490-7

Ferretti A., Corrigan M.G., Cavalazzi B., Malferrari D., & Corradini C., 2025. Ferruginous ghosts in the Silurian of the Carnic Alps, Italy. *Congresso congiunto SIMP-SGI 2025 - Geosciences and the Challenges of the 21st Century*, 596.

Strossova Z., Corradini C. & Corrigan M.G., 2025. The first documented co-occurrence of conodonts and graptolites in Silurian (Telychian) black shales of the Prague Synform, Czech Republic and its stratigraphical and palaeoecological significance. *Palaeontological Publications*, 7, 123-125. ISBN 978-84-09-76490-7

MARIA G. CORRIGA

Dipartimento di Matematica e Geoscienze - Università di Trieste, Via Weiss 2 - 34128 Trieste, Italy

Email: mariagiovanna.corriga@units.it

I am working on conodont taxonomy and biostratigraphy across the Silurian-Devonian boundary mainly in the Carnic Alps, Sardinia and other North Gondwana regions.

In the Carnic Alps, research mainly focuses on the Silurian and Lower Devonian in various sectors of the chain. A project on the Silurian of Tuscany has just started (with C. Corradini, A. Spina and others).

In Sardinia, I'm revising the conodont collection from several sections, some still unpublished, from the Ockerkalk limestones is in progress (with C. Corradini and A. Ferretti).

Taxonomical studies on late Silurian conodonts are in progress (with C. Corradini).

Publications

FERRETTI A., SERVENTI P., FERRARI G., CORRIGA M.G. & CORRADINI C., 2024. Low-diversity conodont and cephalopod-assemblages from the Silurian of the Tinduf Basin, Western Sahara. *Geologica balcanica*, 53, 45-50. doi: 10.52321/GeolBalc.53.3.45

CORRADINI C., CORRADETTI A., CORRIGA M.G., DEVOTO S., DORIGO L., PONDRELLI M. & SPALLETTA C., 2024. *A Ovest di Passo di Monte Croce Carnico*. Le guide del Geoparco delle Alpi Carniche, 6, 48 pp. Comunità di montagna della Carnia editore. ISBN: 978 88 96546 15 4

Abstracts

CORRADINI C., CORRIGA M.G., DESOGUS S., ONGARI C. & FERRETTI A., 2024. Mineralized microremains from the Silurian of the Carnic Alps (Italy). *Geologica balcanica*, 53, 96.

SPINA A., CAPEZZUOLI E., MOLLI G., CORRADINI C., BROGI A., LIOTTA D., ZUCCHI M. & RONCHI A., CORRIGA M.G., DEGL'INNOCENTI N., SCARANI R., 2024. Palynological analysis from the Silurian (Ludlow) of Tuscany (Italy) new findings and chronostratigraphic and palaeogeographic correlation. *Geologica balcanica*, 53, 107.

BRADLEY (BRAD) D. CRAMER

Department of Earth and Environmental Sciences, 115 Trowbridge Hall, University of Iowa
Iowa City, Iowa 52242, USA

Email: bradley-cramer@uiowa.edu

Academic activities

MS Thesis completed: Talia Hill, 2025 - Carbonate Geochemistry via ICP-MS of the Ireviken Biogeochemical Event from the Altajme Core, Gotland, Sweden

Abstracts

Geological Society of America, National Meeting, TALK (San Antonio, TX):

Marshall, N., Love, G.D., Cramer, B.D., Hartke, E.R., Calner, M., Oborny, S.C., & Bancroft, A.M., Ireviken (Silurian) Oceanic Anoxic Event was initiated by a green tide. *GSA Abstracts with Programs*, v. 57, n. 6, doi:10.1130/abs/2025AM-10627.

Geological Society of America, National Meeting, POSTER (San Antonio, TX):

McNally, A.K., Rooney, A., & Cramer, B.D., Osmium isotope data from the Ireviken Biogeochemical Event in the Altajme Core, Gotland, Sweden. *GSA Abstracts with Programs*, v. 57, n. 6, doi:10.1130/abs/2025AM-10230.

Geological Society of America, National Meeting, POSTER (San Antonio, TX):

Havens, M., Hill, T., McNally, A., Peate, D., & Cramer, B.D., C:P ratios through the Ireviken (Silurian) Biogeochemical Event from the Altajme Core, Gotland, Sweden. *GSA Abstracts with Programs*, v. 57, n. 6, doi:10.1130/abs/2025AM-10824.

Academic meetings

GSA Penrose Conference - GTS2030 – Defining the Future of Timescale Calibration. (Co-sponsored by the International Commission on Stratigraphy and the U.S. National Science Foundation).

ANNE-CHRISTINE DA SILVA

SediCCLim, B20, Allée du Six Août, 12, Quartier Agora, Université de Liège, 4000 Liège, Belgique; Tel: +32 – 43662258; Website <https://acdasilva5.wixsite.com/acdasilva>

Email: AC.DaSilva@uliege.be

In the last year, I have been working with Michiel Arts on the cyclostratigraphy of the Silurian.

Publications

Arts, M., Sopher, D. Calner, M. Erlström, M. Samant, R. Cramer, B.D. & A.C. Da Silva - Semi-automated correlation of Silurian well-logs across Gotland, Sweden, using Dynamic Time Warping with Barycenter Averaging (DBA). <https://doi.org/10.31223/X5G16C>

Arts, M.C.M., Coradinni, C., Pondrelli, M., Pas, D., Da Silva, A.C. (2024): An astrochronological framework for the upper Silurian Cellon section constructed using Monte Carlo simulations and wavelet analysis using the WaverideR package. *Frontiers*

Sedimentology, Stratigraphy and Diagenesis, v.12, 1357751.
doi:10.3389/feart.2024.1357751.

The project is now finished but different publications are in progress.

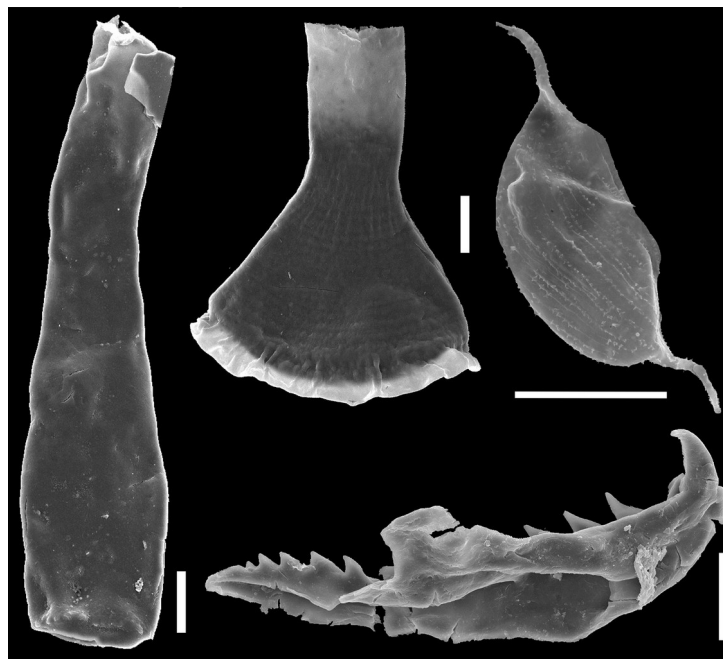
GRACIELA SUSANA DE LA PUENTE

CONICET-UNIVERSIDAD NACIONAL DEL COMAHUE

Buenos Aires 1400, (Q8300IBX) Neuquén, Argentina; Tel. +54 261 4673063

Email: sudelapuente@gmail.com and susana.delapuente@comahue-conicet.gob.ar

I am working on chitinozoans, associated paleoplankton and microfossils of Palaeozoic basins, including the Central Andean Basin, Precordillera, Famatina, Patagonia, Tandilia and Ventania regions in Argentina, and the Praga Basin in a collaboration project. My work on chitinozoans and closely linked sedimentological studies contributes to a better understanding of Palaeozoic biodiversity and basin evolution. Results on Silurian sedimentological and palaeontological studies of Tandilia, in a collaboration project, have been presented in a Sedimentology Meeting and published (Olivo et al., 2025a,b). In 2025, I advised an undergraduate student on chitinozoan techniques, resulting in a successful thesis defense, and am currently guiding three PhD students on sedimentology and stratigraphy projects (of other geological periods). I have established the Laboratory of Palynology and Microfossils, and I also supervise postgraduate activities in the Doctorate of Geosciences program ([Doctorado en Geociencias](#)), both at the National University of Comahue (Universidad Nacional del Comahue), Argentina.



Chitinozoans and associated palaeoplankton (scale bars = 50 microns) from the Silurian Lipeón Formation of the Subandean Ranges, Central Andean Basin, Argentina

Academic meeting in 2025

In 2025, I was invited to present a conference at the V Argentine Meeting on Palaeontology of the Neuquén Basin (Patagonia, Argentina), which focused on the oldest fossil records of the basin. I also led the coordinating group for a thematic session on 'Palaeoceanography' at the XII Argentine Meeting on Marine Sciences & XX Oceanography Colloquium, aimed to explore palaeoceanographic records and interdisciplinary methodologies to understand the

evolution of oceans through geological time. Palaeoceanography was included for the first time in these meetings and has successfully developed in two sessions. I have presented new results on Ordovician and Silurian palaeoplankton assemblages from the Central Andean Basin in northwestern Argentina. These findings, which include previously undocumented chitinozoans, from a high-resolution sampling section allow us to assess microplankton diversity across key palaeoenvironments. In collaboration with different researchers, we shared further progress on palaeontological and sedimentological records from the Silurian of Tandilia. Our findings contribute to understanding the biostratigraphy, palaeoenvironments and geological history of these regions. Results of the sessions of this meeting will be published as scientific articles in a special volume during 2026.

Academic meeting in 2026

For 2026, together with the specialist Dr Ricardo Astini, we have proposed a compact and demanding seven-day pre-conference field trip, titled ‘A field trip through the Proto-Andean sedimentary record and proxies for the reconstruction of western Gondwana basins through time’. This event will be part of the 7th International Conference of Palaeogeography (ICP): ‘Palaeogeography in the digital & AI age’ (<https://www.isp2022.org/en/conferences/>). The 7th ICP will be held in Mendoza (Argentina) located at the foot of the Andes, during October 2026. This marks the first time the ICP will be held outside China, offering an exceptional opportunity to explore the spectacular Proto-Andean sedimentary record. Along the Andes, we will make detailed observations and examine multiple lines of evidence that contribute to our current understanding of the complex tectonic evolution of the Proto-Andean margin. From north to south, we will visit stratigraphic sections, including Silurian sequences, near the Argentina–Bolivia border, spanning the Subandean Ranges, the Cordillera Oriental and the Puna Plateau, as well as the stunning geological transects of the Famatina and Precordillera regions, to the south. The meeting promotes international academic exchange and interdisciplinary collaboration in palaeogeography and related disciplines. It will provide an excellent opportunity to share and discuss the latest achievements in geoscience in a friendly and collaborative environment. We hope you can join us.

Publications

- Olivo, M.S., Isla, M.F., Muñoz, D.F., Halpern, K., Moyano-Paz, D., Arregui, M.G., de la Puente, G.S., Mangano, M.G. & Buatois, L.A., 2025a. Stasis coupled to transgressive surfaces in Silurian sand-rich tide-dominated deltaic successions (Balcarce Formation, Argentina). *Geological Society, London, Special Publications “Bedding Surfaces: True Substrates and Earth's Historical Archive”* (Eds: N.S. Davies & A.P. Shillito) 556, 1-24. <https://doi.org/10.1144/sp556-2025-13>
- Olivo, M.S., Isla, M.F., Muñoz, D.F., Halpern, K., Moyano-Paz, D., Arregui, M.G., de la Puente, G.S., Mangano, M.G. & Buatois, L.A., 2025b. Stasis revealed by phycosiphon suites along transgressive surfaces in a Silurian sand-rich tide-dominated deltaic succession. *XIX Reunión Argentina de Sedimentología. Actas*, p. 118.
- de la Puente, G.S., Astini, R.A., Gomez, F. & Muñoz, D.F., 2025. Paleooceanografía: los océanos a través del tiempo geológico. *XII Jornadas Nacionales de Ciencias del Mar & XX Coloquio de Oceanografía “Los océanos, un mar de oportunidades para nuestro futuro”*. Sesión Temática 28. *Libro de Resúmenes*, p. 523.
- de la Puente, G.S. & Astini, R.A., 2025. Palaeoplankton assemblages and glacial events across the Ordovician–Silurian boundary in the Central Andean Basin, Argentina. *XII Jornadas Nacionales de Ciencias del Mar & XX Coloquio de Oceanografía “Los océanos, un mar de oportunidades para nuestro futuro”*. Sesión Temática 28. *Libro de Resúmenes*, p. 526.
- Di Nardo, J.E., de la Puente, G.S., Martínez, M. & Rodríguez, S., 2025. First record of chitinozoans from the Lolén Formation (Devonian) Claromecó Basin, Argentina: insights

into biostratigraphy and paleoenvironments. *XII Jornadas Nacionales de Ciencias del Mar & XX Coloquio de Oceanografía “Los océanos, un mar de oportunidades para nuestro futuro”*. Sesión Temática 28. Libro de Resúmenes, p. 527.

Muñoz, D.F., Arregui, M.G., Halpern, K., Olivo, M.S., de la Puente, G.S., Moyano-Paz, D. & Isla, M.F., 2025. Coastal and deltaic deposits of the Silurian Balcarce Formation: an updated environmental and palaeoecological perspective. *XII Jornadas Nacionales de Ciencias del Mar & XX Coloquio de Oceanografía “Los océanos, un mar de oportunidades para nuestro futuro”*. Sesión Temática 28. Libro de Resúmenes, p. 531.

ANDRÉ DESROCHERS

Scientific Director, Société du patrimoine mondial Anticosti Adjunct Professor, University of Ottawa, Canada.

Email: adesro@uottawa.ca

I serve as Scientific Director of the Anticosti UNESCO World Heritage Site (Société du patrimoine mondial Anticosti, Québec, Canada) and Adjunct Professor in the Department of Earth and Environmental Sciences at the University of Ottawa.

Research activities continue to focus on the Ordovician–Silurian transition on Anticosti Island, developed as a globally significant reference section for the end-Ordovician mass extinction and early Silurian recovery. Current work integrates carbonate sedimentology, sequence stratigraphy, biostratigraphy, and chemostratigraphy within an international research framework supported by our Anticosti research incubator.

Ongoing collaborative projects include:

- Chitinozoan paleoecology and Ordovician–Silurian biostratigraphy (with N.D.H. van Faals, J.-F. Ghienne, T. Vandenbroucke);
- High-resolution stratigraphy and timing of the end-Ordovician mass extinction (with J. Zimmt, C. Klock, J.-F. Ghienne,);
- Late Ordovician continental weathering and nutrient fluxes associated with the Hirnantian glaciation (with G. Bayon and J.-F. Ghienne);
- Fossil micrometeorites and extraterrestrial dust flux across the Ordovician–Silurian boundary (with F. Jonckheere and S. Goderis).

Publications

Dodd, Matthew S., Li, Cha, Zhang, Zihu, Sadekov, Aleksey Y., Desrochers A. & 10 autres (In press). Recurring Marine Phosphorus Spikes during Major Palaeozoic Mass Extinctions and Climate Change. *Nature Communications*.

Jonckheere F.M., Klock C., Desrochers A., Daoust P. & Vandenbroucke T.R.A. (2025).

Refining chitinozoan biostratigraphy through the early and late Aeronian biogeochemical events on Anticosti Island, Quebec, eastern Canada. *Journal of Micropalaeontology*, 44, 319-344, 2025. DOI : 10.5194/jm-44-319-2025.

Schwarz, Deana M., Longstaffe, Fred J., Jin, Jisuo & Desrochers, André (2025). Hirnantian (Late Ordovician) chemostratigraphy of Anticosti Island, eastern Canada: Comparison of stable carbon and oxygen isotope compositions from brachiopod shells and bulk carbonate. *Palaeogeography, Palaeoclimatology, Palaeoecology*. DOI: 10.1016/j.palaeo.2025.113382

Zimmt, J. B., Bergmann, K. D., Finnegan, S., Present, T. M., Jost, A., & Desrochers, A. (2025). Isotopic constraints on the peak of the Early Paleozoic Icehouse. *Geological Society of America Bulletin*, 136. DOI : 10.1130/B37897.1

REIN EINASTO

Email: reinasto34@gmail.com, Tel. 372 5690 4749

I am compiling a collection of my scientific and popular science articles in Estonian on the Baltic Ordovician and Silurian limestone sequence with my colleague Aat Sarv, where facies (sedimentary environment) models of the Paleobaltic sedimentary basin and cross-sections, the cyclic structure of the strata, more permanent sedimentary gaps and discontinuity surfaces, and the history of the sedimentary basin are of great importance.



ANNALISA FERRETTI

Dipartimento di Scienze Chimiche e Geologiche, Università degli Studi di Modena e Reggio Emilia, via Campi 103, 41125 Modena, Italy

E-mail: ferretti@unimore.it

My Silurian research remains centered on the biosedimentology and paleoecology of the Austrian Carnic Alps. Recent publications have examined how diagenetic processes influence bioapatite mineralogy and the evolution of crystallization patterns through geological time.

Silurian conodont residues from the Rio Tamer area in the Carnic Alps yielded exceptionally preserved three-dimensional skeletal replicas of typically calcareous organisms, produced through early iron-oxide and hydroxide mineralization. Ferretti et al. (2025) study this assemblage, dominated by benthic taxa, using optical microscopy, SEM/ESEM-EDX, XRPD, and Raman spectroscopy. Results show that the replicas consist mainly of goethite, chamosite, and hematite, with evidence of carbonaceous material indicating microbially mediated mineralization pathways.

Corriga et al. (2025) revise large conodont collection from the upper Silurian Ockerkalk of southeastern Sardinia, yielding 48 taxa from 19 genera and allowing recognition of seven biozones from the late Gorstian to the upper Přídolí. The study documents several new species of *Pelekysgnathus* and *Wurmiella*, along with first Sardinian records of multiple previously known taxa. Results show that the Ockerkalk sedimentation ended before the Silurian–Devonian boundary.

Even if not related with Silurian material, the investigation on bioapatite focused on a comparison between recent and fossil material. Using μ -XRD and LA-ICP-MS, Medici et al. (2026) compare crystallinity and REE patterns in Recent and fossil catshark bioapatite, revealing diagenetic shifts in bioapatite lattice parameters, carbon incorporation, and organic-rich regions. These patterns highlight functional differences between tissues.

Finally, I prepared a commemorative tribute to two giants in Silurian stratigraphy, Enrico Serpagli (1936–2023) and Maurizio Gnoli (1948–2023), whose contributions profoundly shaped the field (Ferretti 2025).

Academic meetings

Past meetings

Annalisa Ferretti has co-edited with Marco Balini, David A.T. Harper and Thomas Servais (Ferretti et al. 2026a) the Thematic Issue of Palaeogeography, Palaeoclimatology, Palaeoecology “From rock to time: evolutionary lineages and the calibration of the Chronostratigraphic Scale”, resulting from the General Plenary Session at the 4th International Congress on Stratigraphy STRATI 2023 held in Lille, France (July 11-13, 2023). This issue includes several contributions of particular interest to researchers working on the Silurian (Ferretti et al. 2026a, b). Geologists’ recognition of deep time led to global stratigraphic correlation using fossils, lithology, and later radiometric, chemical, magnetic, and orbital markers, transforming the geological time scale from a relative to a numerically calibrated framework. Ferretti et al. (2026c) trace the major conceptual and methodological advances that underpin modern efforts to subdivide Earth history into increasingly precise and globally applicable chronostratigraphic units.

Future meetings

The Palaeozoic Era, spanning approximately 290 million years from the Cambrian to the Permian, represents one of the most dynamic intervals in Earth's history. It witnessed profound evolutionary innovations, major biotic turnovers, and significant environmental changes that shaped the trajectory of life and the structure of sedimentary basins. Understanding these events and bioevents is crucial for refining stratigraphic correlations, interpreting the interplay between life and Earth systems, and reconstructing global paleogeography. For these reasons, together with Thomas Servais, Lucia Angiolini and Junxuan Fan, we propose a dedicated session entitled “The Palaeozoic world: Events that shaped Life” at the upcoming STRATI 2026 5th International Congress on Stratigraphy.

We invite contributions that advance our comprehension of these critical intervals and their stratigraphic significance in order to encourage interdisciplinary research and discussions that will lead to identification of priority areas for future research on Paleozoic events.

Selected papers resulting from the session will be published in a Virtual Special Issue of the international journal Palaeogeography, Palaeoclimatology, Palaeoecology.

Publications

Corriga, M.G., Ferretti, A. & Corradini, C. 2025. Upper Silurian conodonts from the Ockerkalk limestone of southeastern Sardinia (Italy). *Bulletin of Geosciences*, 100(4): 445–487. doi: 10.3140/bull.geosci.1930 (open access).

Ferretti, A. 2025. A tribute to Enrico Serpagli (1936-2023) and Maurizio Gnoli (1948-2023). *Bollettino della Società Paleontologica Italiana*, 64(3): i-xiv.

Ferretti, A., Cavalazzi, B., Corriga, M.G., Desogus, S., Franchini, C., Malferrari, D., Ongari, C., Zocchi, C. & Corradini, C. 2025. Unique fossil preservation in ferruginous Silurian deposits from the Carnic Alps, Italy. *Bulletin of Geosciences*, 100(4): 661–676. doi: 10.3140/bull.geosci.1926 (open access).

Ferretti, A., Balini, M., Harper, D.A.T. & Servais, T. (EDITORS) 2026a. From rock to time. *Palaeogeography, Palaeoclimatology, Palaeoecology*, VIRTUAL SPECIAL ISSUE, Print ISSN: 0031-0182; Online ISSN: 1872-616X. 1 Editorial + 19 Research articles, Amsterdam.

- Ferretti, A., Balini, M., Harper, D.A.T. & Servais, T. 2026b. Editorial preface to special issue: From rock to time: evolutionary lineages and the calibration of the Chronostratigraphic Scale. *Palaeogeography, Palaeoclimatology, Palaeoecology*, 683: 113456. doi: 10.1016/j.palaeo.2025.113456 (open access).
- Ferretti, A., Balini, M., Harper, D.A.T. & Servais, T. 2026c. Cutting Time in slices. *Palaeogeography, Palaeoclimatology, Palaeoecology*, 683: 113433. doi: 10.1016/j.palaeo.2025.113433 (open access).
- Medici, L., Ferretti, A., Collareta, A., Bosio, G., Bianucci, G., Carnevale, G., Casati, S., Clò, S., Lanteri, L., Lugli, F., Marramà, G., Mollen, F.H., Savioli, M. & Malferrari, D. 2026. Bioapatite crystallinity and Rare Earth Element signatures in fossil and Recent sharks: A window into Past and Present seas. *Chemical Geology*, 702: 123200. doi: 10.1016/j.chemgeo.2025.123200 (open access).

JIŘÍ FRÝDA

Faculty of Environmental Sciences, Czech University of Life Sciences Prague, Kamýcká 129, 165 21, Praha 6 – Suchbátka, and Czech Geological Survey, Klárov 3/131, 118 21 Prague 1, Czech Republic; Tel: +420 606787821;
Email: bellerophon@seznam.cz

The focus of my research in 2025 was the same as in previous years. I continued research with several colleagues (including my PhD student) from our Laboratory of Eco- and Chemostratigraphy on Silurian chemo- and event stratigraphy. Research relevant to the Silurian is mentioned as follows:

1. *Ludfordian chemo- and event stratigraphy:*

Our research was focused on a detailed analysis of (a) response of the Silurian jawed polychaete fauna to environmental changes during the Mid-Ludfordian Glaciation in the Prague Basin (Tonarová et al. 2025), and of (b) Late Silurian brachiopods *Dayia* and *Shaleria* as indicators of environmental changes during the ‘Lau/Kozłowski Bioevent’ on both sides of the Rheic Ocean (Mergl and Frýda, 2025). Additional two manuscripts are in preparation (a) confirming the global character of the Ludfordian *Siluricus* ocean anoxic event culminating just before the Mid-Ludfordian carbon isotope excursion (MLCIE) based on Tl isotopes, and (b) on an anchored astrochronology for the Ludfordian succession across the MLCIE.

2. *Wenlock chemo- and event stratigraphy:*

New high-resolution chemostratigraphical records across the Homeric carbon isotope excursion, suggested that increased oxygenation of offshore environments played a key role in the decline of graptolite biodiversity during the Lundgreni Event (Frýda and Frýdová, 2025).

3. *Other activities related to Silurian research:*

1. Participation in a replacement Global Boundary Stratotype Section and Point (GSSP) for the base of the Telychian Stage (Silurian System) (Loydell et al., 2025).
2. Active participation in the ISSS meeting in Seville with the following contributions: Frýda and Frýdová (2025b), Frýda et al. (2025), Štorch et al. (2025), and Tonarová et al., (2025b).
3. A study (Vodrážková et al., 2025) focusing on clay mineral authigenesis as an example of organomineralization in Paleozoic coated grains and peloids has been published.
4. Together with Marika Polechová and Štěpán Manda, a special issue of the Bulletin of Geosciences was prepared in memory of our colleague and long-time ISSS member Jiří Kříž (1943-2024). This issue contains 14 original papers focused on the Silurian Period (<https://app.geology.cz/bulletin/contents/2025/vol100no4>).

Publications

- Frýda, J. – Frýdová, B. (2025): High-resolution records of the mid-Homerian (Silurian) marine chemistry evolution and graptolite biodiversity across the Lundgreni Event revealed what nearly killed the graptolites. – *Palaeogeography, Palaeoclimatology, Palaeoecology*, 10.1016/j.palaeo.2025.112866.
- Loydell, D.K. – Gutiérrez-Marco, J.C. – Štorch, P. – Frýda, J. (2025): The replacement Global Stratotype Section and Point (GSSP) of the Telychian Stage of the Llandovery Series, Silurian System, at El Pintado (Spain). Episodes, <https://doi.org/10.18814/epiiugs/2025/025009>
- Mergl, M. – Frýda, J. (2025): Late Silurian brachiopods *Dayia* and *Shaleria* as indicators of environmental changes during the ‘Lau/Kozlowskii Bioevent’ on both sides of the Rheic Ocean. *Bulletin of Geosciences* 100(4), 685–738.
- Tonarová, P. – Frýda, J. – Kubajko, M. – Hints, O. (2025): Response of the Silurian jawed polychaete fauna to environmental changes during the Mid-Ludfordian Glaciation in the Prague Basin (Czech Republic). *Bulletin of Geosciences* 100(4), 617–644.
- Vodrážková, S. - Koubová, M. - Munnecke, A. – Kumpan, T. - Vodrážka, R. – Pour, O. - Frýda, J. (2025): Clay mineral authigenesis as an example of organomineralization in Paleozoic coated grains and peloids. – *Sedimentary Geology*, 484-485, 1-15, 106912

Meeting contributions

- Frýda, J. – Frýdová, B. (2025b): Increased oxygenation of offshore environment played a key role in the decline of graptolite biodiversity during the Lundgreni Event. – Meeting ISSS, Seville 2025.
- Frýda, J. – Vodrážková, S. – Simpson, A.J. – Frýdová, B. – Mathieson, D. (2025): Extremely heavy carbon signatures of the Wenlock carbon isotope anomaly in Eastern Gondwana. – Meeting ISSS, Seville 2025.
- Tonarová, P. – Bek, J. – Strossová, Z. – Frýda, J. – Camina, S.C. – Männik, P. – Vodrážková, S. – Štorch, P. – Kubajko, M. – Libertín, M. (2025b): Sheinwoodian fossil assemblage from the Prague Basin. – Meeting ISSS, Seville 2025.
- Štorch, P. – Gutiérrez-Marco, J.C. – Loydell, D.K. – Frýda, J. (2025): The uppermost Rhuddanian and Aeronian succession in the El Pintado section (Valle Syncline, SW Spain). – Meeting ISSS, Seville 2025.

MANSOUREH GHOBADI POUR

Department of Natural Sciences, National Museum Cardiff, Cathays Park, Cardiff, CF19 2NP, UK.

E-mail: mghobadipour@yahoo.co.uk

I continue my work on the Aeronian trilobites fauna of central Iran (Tabas region) in cooperation with Robert Owens and Leonid Popov.

Publications

- Popov, L.E., Ghobadi Pour, M., Modzalevskaya, T.L., Hairapetian, V. 2025. First late Silurian (Ludfordian–Pridoli?) brachiopods from Iran. *Palaeoworld*, 34(4), p.100894.
- Popov, L.E., Holmer, L.E., Hints, L. Ghobadi Pour, M., Zuykov, M. 2025:02:28. Pseudopholidops – the earliest craniopside (Brachiopoda, Craniiformea): an extinction survivor. *Australasian Palaeontological Memoirs* 57, 1–20. ISSN 2205-8877.

VOLODYMYR GRYTSENKO

National Natural History Museum, 15 Bohdan Khmelnytskyi street, 01022, Kyiv, Ukraine;

Tel. +380663174513

Email: favosites@ukr.net

I have the plan to review my Silurian collections of Rugosa, Tabulata and Stromatoporoidea.

Publications

Гриценко В.П. Розрізи венду, ордовіку, силуру та нижнього девону на Дністрі— Джерело нових палеонтологічних знахідок: 11-14. Збірн.наук. праць. Відп ред. Ціхонь С.І. Львів, 2025 ISSN2078-6212 Print 2786-6564 Online. Проблеми геології України. – 126 с. [English title: Vendian, Ordovician, Silurian and Lower Devonian sections on the Dniester River – A source of new paleontological finds – EJ]

Гриценко В.П., Анфімова Г.В. Радзівілл О. А. Збереження регіональних колекцій опорних розрізів в ННПМ НАН України: 14-18. Збірн.наук. праць. Відп ред. Ціхонь С.І. Львів, 2025 ISSN2078-6212 Print 2786-6564 Online Проблеми геології України. – 126 с [English title: Preservation of regional collections of reference sections in the National Museum of Natural History of the National Academy of Sciences of Ukraine – EJ]. Abstract at the conference Organic world of the precambrian and phanerozoic: theoretical and applied aspects of research Materials of the International Scientific Conference and XLI Session of the Ukrainian Paleontological Society of the NAS of Ukraine

Silurian of Ukraine: biostratigraphy and division system into stages/belts based on coral study data. Grytsenko V.P. National Natural History Museum NAS of Ukraine, Kyiv, Ukraine, favosites@ukr.net

JUAN CARLOS GUTIÉRREZ-MARCO

Instituto de Geociencias (CSIC-UCM) and Área de Paleontología GEODESPAL, Facultad de Ciencias Geológicas, José Antonio Novais 12-2ª pl, E-28040 Madrid, Spain. Tel.: +34-676933499 Email: jcgrapto@ucm.es

The year 2025 was, for me, a particularly significant one, owing to the responsibility of organising in Seville, together with my collaborator Sara Romero, both the Subcommission Business Meeting and the Golden Spike ceremony for the replacement GSSP marking the base of the Telychian Stage. It was especially gratifying to share a flamenco performance and dinner fellowship with such distinguished Silurian colleagues, and to experience the pleasure of being reunited, many years later and at the very site in question, with David Loydell, Petr Štorch and Jiří Frýda, co-authors of the original stratotype proposal. The presence of the ICS Chair, Professor Elisabetta Erba, was likewise deeply appreciated. The occasion also afforded me the opportunity to acknowledge publicly the pioneering role of the French geologist Michel Robardet, scientific discoverer of the Ordovician–Silurian successions of northern Seville, and mentor and friend to the present author for the remainder of his life.

Taking advantage of the meeting, I presented, together with several Spanish colleagues, brief updates on ongoing Silurian research in northern, central and southern Spain. The gathering also enabled the Andalusian authorities responsible for natural heritage, as well as the national authorities with competence in water management, to become fully aware of the outstanding significance of the eight Silurian–Devonian sections exposed along the margins of the El Pintado reservoir, not solely the GSSP section. In this regard, direct collaboration has been decisively strengthened with the Global UNESCO Geopark Sierra Morena de Sevilla, within which El Pintado is located. The Geopark will assume responsibility for

managing restricted access to the GSSP area for exclusive scientific use, regulated through a formal protocol of prior application and permitting.

In addition to the activities presented at the Seville meeting, 2025 also saw the long-awaited publication of the comprehensive biostratigraphical study of the Silurian in the south-central Iberian region, which constituted the core of Saturnino Lorenzo's previously unpublished Ph.D. thesis, submitted some years ago. Furthermore, collaboration continued with P. Štorch, D. K. Loydell and J. Frýda on a broader study of the Aeronian graptolite assemblages of the El Pintado 5 section, currently under review.

Among the Silurian-related activities already initiated in 2026 and planned for the biennium 2026–2027 — the latter year marking my attainment of mandatory retirement age (70 for scientists in Spain) — I would highlight the following collaborations: (1) description of a new Ludlow crinoid from the Valle Syncline (Ossa-Morena Zone), in collaboration with Samuel Zamora and Bill Ausich; (2) characterisation of new palaeontological horizons within the Silurian–Devonian succession of the Nevera Inlier (Iberian Cordillera), in collaboration with S. Romero; (3) study of orthoconic nautiloid faunas from the south-central Iberian region, in collaboration with P. Serventi and S. Lorenzo; (4) investigation of Ludlow and Pírdol ostracod assemblages in the West Asturian–Leonese and Ossa-Morena zones (NW and SW Spain, respectively), in collaboration with V. Perrier and E. Bernárdez; (5) Silurian bivalve biostratigraphy in SW Iberia, in collaboration with S. Romero; and (6) several projects on Silurian graptolites in NW Spain, including the Tamames and Alcañices synclines, as well as the Salas de la Ribera section, notable for its remarkable accumulation of *Colonograptus* sinrhabdosomes.

Publications

- Lorenzo, S. & Gutiérrez-Marco, J.C. 2025. Bioestratigrafía del Silúrico (graptolitos) de la parte meridional de la Zona Centroibérica española. *Revista de la Sociedad Geológica de España*, 38 (2), 83–111. doi: <https://doi.org/10.55407/rsge.116599>
<https://recyt.fecyt.es/index.php/RevSocGeoEsp/article/view/116599/86091>
- Loydell, D.K., Gutiérrez-Marco, J.C., Štorch, P. & Frýda, J. 2025. The replacement Global Stratotype Section and Point (GSSP) of the Telychian Stage of the Llandovery Series, Silurian System, at El Pintado, Spain. *Episodes*, 48 (2), 199–211. doi: <https://doi.org/10.18814/epiiugs/2025/025009>
- Maletz, J. & Gutiérrez-Marco, J.C. 2025. The Ordovician and Silurian benthic graptolite *Ptilograptus* Hall, 1865 (Graptolithina, Dendroidea). *Bulletin of Geosciences*, 100 (4), 645–660. doi: <https://doi.org/10.3140/bull.geosci.1928>

Reference and link to the Seville Volume:

- Gutiérrez-Marco, J.C. & Romero, S., Eds. 2025. International Subcommittee on Silurian Stratigraphy Meeting 2025: “Advances in Silurian chronostratigraphy and high-resolution correlation”, Sevilla. Abstracts Book. *Palaeontological Publications*, 7, 157 pp. ISBN-13: 978-84-09-76490-7
https://sepaleontologia.es/wp-content/uploads/2025/09/Palaeontological-Publications7_Silurian-Conference.pdf

Papers in the Seville volume:

- Bernárdez, E., Serventi, P. & Gutiérrez-Marco, J.C. 2025. Remarkable Telychian fossils from the A Fonsagrada region (West Asturian-Leonese Zone, NW Spain). In: Gutiérrez-Marco, J.C. & Romero, S. (Eds.), *International Subcommittee on Silurian Stratigraphy Meeting 2025: “Advances in Silurian chronostratigraphy and high-resolution correlation”*. *Palaeontological Publications*, 7, 25–31.
- Gutiérrez-Marco, J.C., Corradini, C., Corrigan, M.G., Romero, S. & Štorch, P. 2025. *Palaeontological characterization of the youngest Silurian strata from the Western Iberian*

- Cordillera (Bádenas and Luesma Formations, Nevera Inlier, NE Spain). In: Gutiérrez-Marco, J.C. & Romero, S. (Eds.), International Subcommission on Silurian Stratigraphy Meeting 2025: “Advances in Silurian chronostratigraphy and high-resolution correlation”. Palaeontological Publications, 7, 55–64.
- Gutiérrez-Marco, J.C., Loydell, D.K. & Romero, S. 2025. The Silurian of northern Seville: steps towards its international recognition. In: Gutiérrez-Marco, J.C. & Romero, S. (Eds.), International Subcommission on Silurian Stratigraphy Meeting 2025: “Advances in Silurian chronostratigraphy and high-resolution correlation”. Palaeontological Publications, 7, 131–155.
- Lorenzo, S., Corradini, C., Corrigan, M.G. & Gutiérrez-Marco, J.C. 2025. An additional Příklad conodont association from the Obejo-Valsequillo Domain (Villaharta, province of Córdoba, SW Spain). In: Gutiérrez-Marco, J.C. & Romero, S. (Eds.), International Subcommission on Silurian Stratigraphy Meeting 2025: “Advances in Silurian chronostratigraphy and high-resolution correlation”. Palaeontological Publications, 7, 67–71.
- Lorenzo, S., Serventi, P., Conti, S. & Gutiérrez-Marco, J.C. 2025. A preliminary report on the late Silurian cephalopods from the Obejo-Valsequillo Domain, SW Spain. In: Gutiérrez-Marco, J.C. & Romero, S. (Eds.), International Subcommission on Silurian Stratigraphy Meeting 2025: “Advances in Silurian chronostratigraphy and high-resolution correlation”. Palaeontological Publications, 7, 73–81.
- Romero, S., Gutiérrez-Marco, J.C., Štorch, P., Perrier, V., Rábano, I., Ebbestad, J.O.R. & Zamora, S. 2025. An upper Gorstian non-graptolite fauna from El Pintado 1 reference section, Sierra Morena de Sevilla UNESCO Global Geopark, SW Spain. In: Gutiérrez-Marco, J.C. & Romero, S. (Eds.), International Subcommission on Silurian Stratigraphy Meeting 2025: “Advances in Silurian chronostratigraphy and high-resolution correlation”. Palaeontological Publications, 7, 89–100.
- Štorch, P., Gutiérrez-Marco, J.C., Loydell, D.K., & Frýda, J. 2025. The uppermost Rhuddanian and Aeronian succession in the El Pintado 5 section (Valle syncline, SW Spain). In: Gutiérrez-Marco, J.C. & Romero, S. (Eds.), International Subcommission on Silurian Stratigraphy Meeting 2025: “Advances in Silurian chronostratigraphy and high-resolution correlation”. Palaeontological Publications, 7, 119–122.

ROBERT D. HILLIER

Amgueddfa Cymru - Museum Wales, Department of Natural Sciences, Amgueddfa Cymru – National Museum Wales, Cardiff, CF10 3NP, UK.

Email: Rob.Hillier@pembrokeshire.gov.uk

Sedimentology and palynology of the Red Cliff Formation (Gorstian age), Pembrokeshire with Prof Ken Higgs (UC Cork). The work has just been accepted for publication in the Proceedings of the Geologists’ Association (attached at the end of this contribution).

Ongoing sedimentological and ichnological study of the Llandovery age Skomer Volcanic Group, Pembrokeshire UK with Dr Alan Thomas (University of Birmingham). Recognition of several cycles of Gilbert delta deposits marginal to the Skomer volcanic centre that display large-scale evidence of basin margin instability. Work will complete in the summer of 2026.

Wenlock stratigraphy and sedimentology of the Sawdde Gorge and Rumney Inlier, Wales, UK with Dr Dick Waters. This work will complete in late 2026.

Publications

Hillier, R.D., Waters, R.A., Davies, J.R., 2025. A Silurian compound delta system in south central Wales, UK. *Geological Magazine* 160(e42), 1–27.

<https://doi.org/10.1017/S0016756825100289>

Wright, V.P., Marriott, S.B., Hillier, R.D., 2025. Palaeosols and surfaces: what fossil soils tell us about the representation of time in some sedimentary successions. In: Davies, N. S., Shillito, A. P., (Eds.), *Bedding Surfaces: True Substrates and Earth's Historical Archive*. Geological Society, London, Special Publications 556, 1–15.

<https://doi.org/10.1144/SP556-2024-37>

Abstracts

Robert D. Hillier, Kenneth T. Higgs, Silurian (Gorstian) terrestrialisation records in the Red Cliff Formation of Pembrokeshire, UK: the oldest Old Red Sandstone in England and Wales.

KATHLEEN HISTON

Independent Researcher, Home Address Via Mazzini 4, 21039 Valganna, Varese, Italy

Contact Email only: hiscat@interfree.it

I continue my studies on Silurian cephalopods, and am working on finalizing papers related to the systematics of collections from the Graz Palaeozoic (Austria).

Publications

Histon, K. 2025. The Austrian Paleontologist Guido Stache's unpublished monograph of Silurian fossils. *Earth Sciences History*, vol. 44 (2), 334-352. doi: 10.17704/1944-6187-44.2.334

HUANG BING

Nanjing Institute of Geology and Palaeontology, Chinese Academy of Sciences, Nanjing 210008, China; Tel.: +86 25 83282189

E-mail: bhuang@nigpas.ac.cn

In 2025, I maintained an active presence in international cooperation and fieldwork. I visited the Senckenberg Research Institute in Germany to engage in cooperative research on Late Silurian to Early Devonian brachiopods. Domestically, I organized and participated in three field excursions covering the Gansu, Yunnan, Guizhou, and Sichuan regions, with a specific focus on Ludlow and Pridoli stratigraphy.

My research productivity this year was marked by several publications, developed through continued collaboration with both students and colleagues. A major highlight, published in PNAS, was the discovery of exquisitely preserved setae in an in situ early Silurian brachiopod assemblage, where multiproxy analyses revealed their intricate ultrastructural details. We demonstrated that these setae actively mediated spatial organization, as evidenced by a checkerboard-like community distribution quantitatively linked to setae length. Furthermore, I examined macroevolutionary processes during the post-LOME recovery, finding that early Silurian radiation was defined by significant geographic expansion and asynchronous taxonomic shifts rather than diversity patterns alone.

A significant undertaking this year was the preparation of the "Genera of Silurian Brachiopods in China." I have successfully completed the initial draft, which currently totals over 80,000 words (excluding references and appendices). In parallel, I completed the processing of specimens collected during this year's field seasons and continued the compilation and organization of my own research datasets.

In terms of professional service, I served as a Voting Member and Web Manager for the ISSS, performing several updates to the official website. As deputy editor-in-chief for *Acta Palaeontologica Sinica*, I managed the peer-review process for over ten manuscripts. On the teaching front, I recruited two new master's students to study post-LOME recovery and paleobiogeography. Additionally, I provided extensive guidance to a master's student, who has completed several research work and is expected to successfully defend their thesis this year.

Publications (First and Corresponding author)

- Huang Bing*, Chen Di, Pan Fei, Shi Kaiyan, 2026. First record of a deep-water brachiopod fauna in the Telychian of South China and its paleoecological implications. *Journal of Palaeontology*. Doi:10.1017/jpa.2025.10200
- Huang Bing*, Rong Jiayu, 2025. Ancient seabed checkerboard: How setae shaped spatial distributions of Silurian brachiopods. *PNAS*. Vol. 122 No. 30 e2509354122
- Huang Bing*, Chen Di, Shi Kaiyan, 2025b. Characterizing the biogeographic and taxonomic patterns of post-LOME (early Silurian) diversification of brachiopods. *Palaeogeography, Palaeoclimatology, Palaeoecology* , 675 : 113105.
- Huang Bing*, Chen Di, Candela Y., 2025a. A new brachiopod fauna from the Telychian (early Silurian) of Southwest China and its palaeoecological significance. *Alcheringa: an Australasian Journal of Palaeontology*. VOL. 49, NO. 1, 30–39.
- Huang Bing*, 2025. Preliminary Exploring Large Language Models in Paleontology: A Prototype RAG based Knowledge QA System. *Acta Palaeontologica Sinica*, 64, (1), 100-112.

EMILIA JAROCHOWSKA

Department of Earth Sciences, Utrecht University
Postal address: Winthonlaan 30C, 3526 KV Utrecht, the Netherlands
Email: e.b.jarochowska@uu.nl

I dedicate myself primarily to the project [MindTheGap: Quantifying the completeness of the stratigraphic record and its role in reconstructing the tempo and mode of evolution](#), funded by the European Research Council, which allows me to use Silurian case studies but does not address a specific period in the Earth's history. My focus has been to develop a stratigraphic forward model for marine carbonates: [CarboKitten](#). The model is age-agnostic but can be adapted to emulate carbonate producers with particular features. I am looking for opportunities to collaborate with researchers interested in developing age-depth models based on integrated stratigraphy and, in particular, in their applications to paleontological problems.

I have collaborated with David Ray on the Silurian of the Midland Platform and we co-supervised the BSc thesis of Lisa Oostra, who worked with us on carbon isotope stratigraphy of the Usk Inlier in Wales (see her report in this Newsletter). I was also involved in research on Telychian-Sheinwoodian Silurian sea-level changes with David, Helen Hughes, Alan Richardson and Alan Thomas.

Academic meetings

Future meetings

I am co-organizing the Lorentz workshop “Bridging Stratigraphic Palaeobiology and Phylogenetics” (<https://www.lorentzcenter.nl/bridging-stratigraphic-palaeobiology-and-phylogenetics.html>) in Leiden, the Netherlands, on 28.09 – 2.10.2026, together with Rachel Warnock, Niklas Hohmann, Laura Mulvey and Johan Hidding. We are particularly interested in attracting participants with datasets combining fossils and stratigraphy for creating phylogenies that integrate stratigraphy into phylogenetic tree inference. Participation in the

workshop requires basic familiarity with phylogenetic methods. We welcome expressions of interest in participation until the 24th of May 2026 at the page linked above.

I am also co-organizing the European Conodont Symposium (ECOS) in Montpellier, 27-29 October 2026, led by Catherine Girard.

At Strati2026, I am giving a short course in stratigraphic forward modelling of carbonates together with Xianyi Liu and Johan Hidding. If you are interested in such a course, but you cannot attend, please get in touch.

Past meetings

My research group has hosted the CycloNet meeting on the reproducibility of cyclostratigraphy and its integration with other stratigraphic approaches. The meeting took place on 26-28th June in Utrecht, with a weekend fieldtrip to the Silurian and Devonian of Belgium afterwards, led by Anne-Christine da Silva and David De Vleeschouwer, who presented Silurian through Carboniferous sections.

I gave a short course on modelling stratigraphic paleobiology in R at the Annual Meeting of the Palaeontological Association in December 2025. The complete materials are freely available here: https://mindthegap-erc.github.io/StratPal_workshop_materials/

Publications

Hidding, J., Jarochowska, E., Hohmann, N., Liu, X., Burgess, P., & Spreuw, H. (2025).

CarboKitten.jl – an open source toolkit for carbonate stratigraphic modeling. *EGUsphere*, 2025, 1–28. <https://doi.org/10.5194/egusphere-2025-4561>

Hohmann, N., & Jarochowska, E. (2025). StratPal: An R package for creating stratigraphic paleobiology modelling pipelines. *Methods in Ecology and Evolution*, 16(4), 678–686. <https://doi.org/10.1111/2041-210X.14507>

Ray, D. C., Jarochowska, E., Hughes, H. E., Richardson, A. S., & Thomas, A. T. (2025). Glacio-eustatic sea-level changes and their magnitude in the Telychian–Sheinwoodian (Silurian) of England and Wales. *Journal of the Geological Society*, 182(5), jgs2024-292. <https://doi.org/10.1144/jgs2024-292>

STEPHEN KERSHAW

Emeritus at Brunel University of London, Kingston Lane, Uxbridge, UB8 3PH, UK; Tel. 00441223240435

Email: Stephen.Kershaw@brunel.ac.uk, stevekershaw@talktalk.net

Stephen Kershaw (emeritus from Brunel University London; and Natural History Museum, London) continues work on Silurian stromatoporoids. Current focus is on the status of their taxonomy; a Figshare.com file is in preparation as a discussion document to explore the validity of Silurian stromatoporoid taxa in relation to the established systematics scheme, that may have potential flaws.

STEVEN LODUCA

Department of Geography and Geology, Eastern Michigan University, Ypsilanti, MI 48197, United States

Email: sloduca@emich.edu

Work continues on the taxonomy, phylogeny, paleoecology, and taphonomy of early Paleozoic macroalgae. Current projects underway include an overview paper that focuses on recent advances in understanding of early macroalgae in the fossil record and that also highlights avenues of study that show particular promise for future work. This paper is currently under review and emerged from a talk delivered at the IGCP 735 meeting held in Llandrindod, Wales (UK) last summer. In addition, a paper on the species-level taxonomy

and phylogenetic affinity of the Silurian taxon *Palmatophycus*, including formal assignment of material to the genus from Ontario and Michigan, is nearing completion and will be submitted in the next month or two, and work continues on the recovery and analysis of biomolecules from Silurian macroalgae preserved as carbonaceous compressions.

Publications:

LoDuca, S.T., 2025, New species of noncalcified dasycladalean and bryopsidalean macroalgae and a new occurrence of *Thalassocystis striata* (Chlorophyta) from the Silurian (Llandoveryan) of Michigan: *Journal of Paleontology*, v. 99, p. 747–760.

DAVID LOYDELL

School of the Environment, Geography and Geosciences, University of Portsmouth, Burnaby Road, Portsmouth PO1 3QL, United Kingdom

Email: david.loydell@port.ac.uk

2025 was initially dominated by Turkish projects, one of which has now been published (Tanrikulu & Loydell 2025), and putting together various publications in preparation for the Telychian GSSP ceremony in September. Juan-Carlos Gutiérrez-Marco is to be congratulated and is warmly thanked for his tremendous efforts in organizing the ISSS Seville Meeting and GSSP ceremony at El Pintado. It was wonderful to see local dignitaries collecting graptolites and seeming genuinely fascinated by the remarkable geology exposed around the El Pintado reservoir. Current work is on some huge collections of Welsh Llandovery graptolites and collaborating on various geochemical studies.

Publications

Gutiérrez-Marco, J.C., Loydell, D.K. & Romero, S. 2025. The Silurian of northern Seville: steps towards its international recognition. *Palaeontological Publications*, 7, 131–155.

Loydell, D.K. 2025. The Telychian. *Palaeontological Publications*, 7, 11–20.

Loydell, D.K., Gutiérrez-Marco, J.C., Štorch, P. & Frýda, J. 2025. The replacement Global Stratotype Section and Point (GSSP) of the Telychian Stage of the Llandovery Series, Silurian System, at El Pintado (Spain). *Episodes*, 48(2).
<https://doi.org/10.18814/epiiugs/2025/025009>

Štorch, P., Gutiérrez-Marco, J.C., Loydell, D.K. & Frýda, J. 2025. The uppermost Rhuddanian and Aeronian succession in the El Pintado 5 section (Valle syncline, SW Spain). *Palaeontological Publications*, 7, 119–122.

Tanrikulu, S. & Loydell, D.K. 2025. Integrated bio- and chemostratigraphy of the Upper Ordovician and lower Silurian of the Central and Eastern Taurides, Türkiye. *Bulletin of Geosciences*, 100. <https://doi.org/10.3140/bull.geosci.1931>

JÖRG MALETZ

Institut für Geologische Wissenschaften, Freie Universität Berlin, Malteser Str. 74-100, Haus C, Raum 005, D-12249 Berlin, Germany

Email: yorge@zedat.fu-berlin.de

Even though I retired last summer, I am still working on Cambrian to Silurian graptolites worldwide. One focus is the research on benthic graptolites from the Ordovician and Silurian, trying to decipher tubarium construction in this difficult group. Research on the evolution of the Silurian Retiolitidae is under way with ZUZANA STROSSOVÁ (Czech Republic), CHUANSHANG WANG & XIAOFENG WANG (Wuhan, China) on material from various

regions. Further work on the Llandovery successions of the South China platform with CHUANSHANG WANG & XIAOFENG WANG (Wuhan, China) is in progress.

Publications

- Maletz, J., Zhu, X.-J., Zhang, Y.-D. & Gutiérrez-Marco, J. C. 2025. The identification of 'feather-like' fossils in the Palaeozoic: Algae, hydroids or graptolites? *Palaeoworld* 34, 200909. <https://doi.org/10.1016/j.palwor.2025.20090>
- Li, Y. G., Yan, C. B., Wang, C. S., Maletz, J., Liang, Y., Yao, H. Z., Wu, H. Z., Chen, W. X., Cheng, J. Q., Fang, Z. C. & Xiaofeng Wang, X. F. 2025. Chitinozoans from the Telychian (Llandovery, Silurian) Shenxuanyi Member, Upper Ningqiang Formation of the northwestern Yangtze Platform, China. *Swiss Journal of Palaeontology* 144, 20. 33 pp. <https://doi.org/10.1186/s13358-025-00364-7>
- Maletz, J. 2025. Evolutionary implications from the tubarium construction of the Retiolitinae (Graptolithina) across the Silurian *Cyrtograptus lundgreni* extinction event *PalZ* 99, 201-219. <https://doi.org/10.1007/s12542-025-00733-0>
- Maletz, J. & Lerosey-Aubril, R. 2025. Monopodial and sympodial growth modes in the colonial Graptolithina (Hemichordata, Pterobranchia). *Evolution & Development*, 2025; 27:e70010 1 of 11 <https://doi.org/10.1111/ede.70010>
- Maletz, J. 2025. The evolution of symmetry in the Pterobranchia (Hemichordata). *Zootaxa* 5683 (3), 360-376. <https://doi.org/10.11646/zootaxa.5683.3.2>
- Selden, P. A., Histon, K., Becker, R. T., Cichowolski, M., Evans, D. H., Harper, D. A. T., King, A. & Maletz, J. 2025. Contributions on the history and heritage of the Treatise on Invertebrate Paleontology. *Earth Sciences History* 44 (2), 387-420. doi:10.17704/1944-6187-44.2.387.
- Lukeneder, P., Ottner, F., Hopfensperger, B., Maletz, J. & Heinz, P. 2025. Neuigkeiten von Eduard Suess und den Graptolithen des Barrandiums. 16. Internationales Erbe-Symposium. Kulturelles Erbe in Geo- und Montanwissenschaften. Bibliotheken - Archive - Museen - Sammlungen, 120-127.

ŠTĚPÁN MANDA

Czech Geological Survey. Klárov 3, Praha 1, CZ-110 00, Czech Republic.

Email: stepan.manda@geology.cz

Work continues on the taxonomy, phylogeny, palaeoecology of Silurian cephalopods and refinement of the Silurian stratigraphy in the Prague Basin. The proposal for the division of the Přídolí Series was revised and new biostratigraphic data was added.

Publications

- Manda, Š. and Turek, V. 2025. Ontogeny, muscle scars, colour pattern and predation marks in a Silurian orthoceratid cephalopod. *Acta Palaeontologica Polonica*, 70(3), 517–541. <https://doi.org/10.4202/app.01243.2025>
- Manda, Š. and Turek, V. 2025. Colour patterns in Palaeozoic orthoceratoid cephalopods – diversification of striping. *Bulletin of Geosciences*, 100(4), 739–783. <https://doi.org/10.3140/bull.geosci.1956>
- Kříž, J., Cherns, L. and Manda, Š. 2025. Palaeoecology of a volcanically influenced Silurian sea floor in the Central Prague Basin, and its regional setting. *Bulletin of Geosciences* 100(4), 785–808. <https://doi.org/10.3140/bull.geosci.1962>

PEEP MÄNNIK

Department of geology, Tallinn University of Technology, Ehitajate tee 5, 19086 Tallinn, Estonia; Tel. +372 588 450 82

Email: peep.mannik@taltech.ee

Starting from the beginning of 2023, my studies are mainly related to Ordovician (5-year project PRG1701: “From Greenhouse to Icehouse: Reconstructing Ordovician Climate Transitions and Biotic Response in Baltica” financed by Estonian Research Council.

Publications

Männik, P., Meidla, T. & Hints, O. 2026. An updated correlation of the Silurian strata in Estonia. – *Estonian Journal of Earth Sciences* 75(1), 19–34.
<https://doi.org/10.3176/earth.2026.02>

Tonarová, P., Bek, J., Strossová, Z., Frýda, J., Camina, S. C., Männik, P., Vodrážková, S., Štorch, P., Kubajko, M. & Libertín, M. 2025. Sheinwoodian fossil assemblage from the Prague Basin. – In: Gutiérrez-Marco, J. C & Romero, S. (eds) *International Subcommission on Silurian Stratigraphy Meeting, 10th–13th September 2025, Sevilla (Spain)*. Abstracts Book. *Palaeontological Publications* 7, 127–128.

TIIU MÄRSS

I officially retired a few years ago, but I have continued my research work on Silurian-Lower Devonian fishes at the Department of Geology of Tallinn University of Technology. Last year, in 2025 as below, I completed the work I started in 1973 with fieldwork in the Central Urals. Since then, I have published about 10 articles on the early fishes of this region, both individually and with co-authorship.

Publications

Märss, Tiiu. 2025. On the Silurian and lowermost Devonian vertebrates of the Ufa Amphitheatre, the Central Urals, with emphasis on agnathans and correlations with the East Baltic. *Estonian Journal of Earth Sciences*, 74(2), pp. 96–119.
<https://doi.org/10.3176/earth.2025.07>

My more complete publication list is: <https://kirjandus.geoloogia.info/en/library/68>

PAT MCLAUGHLIN

Basin Analysis Laboratory, Illinois State Geological Survey, Prairie Research Institute, University of Illinois Urbana-Champaign, 615 E. Peabody Drive, Champaign, IL 61820
pim@illinois.edu

Pat is a Principal Research Scientist at the Illinois State Geological Survey (USA) where he runs the Basin Analysis Laboratory which conducts biochemostratigraphy and elemental facies analysis. His Silurian research in 2025 focused on the Ireviken, Mulde, and Lau events in the U.S. midcontinent. During this year he co-advised the PhD work on Carolina Klock with Thijs Vandenbroucke at Ghent University (Belgium) and was a member of the doctoral committee for Iris Vancoppenolle.

Publications

Klock, C., McLaughlin, P.I., Paton, T., Bancroft, A.M., Cane, G., Vandenbroucke, T.R.A., Emsbo, P., 2025. Onset of the Mulde biogeochemical event in the midcontinent basin (Silurian, USA). *Palaeogeography, Palaeoclimatology, Palaeoecology*, 675, 10 p.
<https://doi.org/10.1016/j.palaeo.2025.113096>

ANA MESTRE

Laboratorio de Micropaleontología, CIGEOBIO-IIM-Facultad de Ingeniería-UNSJ, Libertador San Martín 1109, San Juan-CP 5400, Argentina. E-mail: amestre@unsj.edu.ar
I mainly work in the Ordovician conodonts and stratigraphy of carbonate succession from Argentine Precordillera, but the research on the stratigraphy, conodont biostratigraphy, and evolution of the Precordilleran Silurian basin continues. My current activities involve collaboration on a project with Drs. Blanca Toro, Nexxys Herrera, Juan Luis Benedetto and Claudia Rubinstein, focused on high-resolution biostratigraphic analysis across the Ordovician-Silurian boundary in the Precordillera. I am also cooperating with Drs. Estefania Asurmendi and Susana Heredia on a project studying the stratigraphy and sedimentology of the La Chilca Formation (Late Ordovician–Silurian) in the Precordillera.

I'm on the Organizing Committee for the July 2027 International Subcommittee on Silurian Stratigraphy (ISSS) meeting, to be held in San Juan, Argentina.

Dr. Maria José Gómez has successfully completed her postdoctoral studies, which focused on Silurian–Early Devonian conodont biostratigraphy in the Precordillera. Additionally, a new PhD student, Lic. Exequiel Diaz, has begun his PhD thesis on the sedimentary analysis of the Los Espejos Formation, supervised by Dra. Estefania Asurmendi and me.

Publications

- Gómez, M.J, Mestre, A. and Heredia, S. 2024. New insight on upper Silurian-lowermost Devonian conodont biostratigraphy of the Argentine Precordillera and its paleogeographic implications for the SW Gondwana margin. *Historical Biology*, DOI: 10.1080/08912963.2024.2375275.
2. Asurmendi, E., Toro, E., Díaz, D. E., Mestre, A., Gómez, M. J and Heredia, S., 2025. El registro de estructuras *Kinneyia* y su implicancia paleoambiental en la Formación Los Espejos, Precordillera Central. XIX Reunión Argentina de Sedimentología.
 3. Herrera Sánchez, N., Toro, B., Mestre, A., Benedetto L. and Remonda, G., 2025. High resolution graptolites and conodonts biostratigraphy from the Ordovician-Silurian transition at Cerro La Chilca section, Argentine Precordillera. 5th Annual Meeting of the IGCP 735 Nanjing, China, p. 54.

IAN PERCIVAL

Geological Survey of New South Wales, WB Clarke Geoscience Centre, Londonderry, N.S.W., Australia
Email: ianpercival1952@gmail.com

Ian Percival (Honorary Research Associate at the Geological Survey of New South Wales) was heavily involved in editing for much of 2025, particularly as Associate Editor-in-Chief of *Palaeoworld*. He has been organising (together with Guest Editor Andrew Simpson) a Special Issue of *Palaeoworld* celebrating the scientific achievements of the late John Talent who specialised in Silurian and Devonian research. We have 12-14 papers accepted or in final stages of revision, with the entire Special Issue appearing this year.

VINCENT PERRIER

Université Lyon 1, UMR 5276 LGLTPE, Bat. Géode, 2 rue R. Dubois, 69622 Villeurbanne
Email: vincent.perrier@univ-lyon1.fr

I am working on Silurian myodocopid ostracods, the group that first colonised the pelagic niches during the mid/late Silurian. At the moment I am concentrating on late Silurian faunas from the Iberian peninsula.

Publications

Romero, S., Gutiérrez-Marco, J. C., Štorch, P., Perrier, V., Rábano, I., Ebbestad, J. O. R. & Zamora, S. (2025). An upper Gorstian non-graptolite faune from El Pintado 1 reference section, Sierra Morena de Sevilla Unesco Global Geopark, SW Spain. In Gutiérrez-Marco, J. C., Romero, S. (Eds.), International Subcommission on Silurian Stratigraphy Meeting 2025. Advances in Silurian chronostratigraphy and high-resolution correlation. Abstracts Book. Palaeontological publications, 7, 25–32..

JOSÉ MANUEL PIÇARRA D'ALMEIDA

LNEG - (Laboratório Nacional de Energia e Geologia / Geological Survey of Portugal).
Unidade de Geologia, Hidrogeologia e Geologia Costeira. Ap. 14, 7601-909 Aljustrel,
Portugal; Tel.00 351 210924672
Email: jose.picarra@lneg.pt

I'm retired but I'm still a collaborator of the National Laboratory of Energy and Geology (LNEG)/Geological Survey of Portugal.

LEONID POPOV

Department of Natural Sciences, National Museum Cardiff, Cathays Park, Cardiff, CF10
3NP, UK.
Email: lepbarry@yahoo.co.uk; leonid.popov@museumwales.ac.uk

I have been retired for several years but still hold an honorary position at the National Museum Cardiff, where I am primarily engaged in a taxonomic study of Silurian brachiopods from Iran, Kazakhstan, and Wales. The manuscript on the Silurian lingulide with a pedicle preserved from Wales has been completed and now accepted for publication.

Publications

Popov, L.E., Holmer, L.E., Hints, L., Pour, M.G. & Zuykov, M. 2025. 'Pseudopholidops'-the earliest craniopside (brachiopoda, craniiformea): An extinction survivor. Australasian Palaeontological Memoirs, 57, 1-20.

Popov, L.E., Pour, M.G., Modzalevskaya, T.L. and Hairapetian, V. 2025. First late Silurian (Ludfordian–Pridoli?) brachiopods from Iran. Palaeoworld, 34(4), p.100894.

SIGITAS RADZEVIČIUS

Department of Geology and Mineralogy, Institute of Geoscience, Vilnius University, M.K.
Čiurlionio 21/27, LT-03101, Lithuania.
Email: sigitas.radzevicius@gf.vu.lt

I am working on the taxonomy, stratigraphic distribution, diversity, disparity, and phylogeny of Silurian graptolites. Most of my research is concentrated on the construction of higher resolution Silurian time scales by means of integrated (bio-, chemo-, cyclo-) stratigraphy. I'm integrating stratigraphic models, taxonomic data, geochemical, and geophysical proxies in order to understand the drivers of Silurian global extinction and turnover events. Together with T. Želvys (Vilnius University), we are working on integrated stratigraphy (bio and chemo) of Wenlock in Lithuania and with Misha Whittingham we have submitted project on paleobiogeography, and evolutionary dynamics in Silurian graptolites.

Publications

- Cichon-Pupienis, A. K. Spiridonov, A. Kaminskaitė-Baranauskienė, I. Stankevič, R. Garbaras, A. Radzevičius, S. 2025. Carbonate facies evolution, bio- and carbon isotope stratigraphy through the Ludfordian (Silurian) on the shelf of Baltica (Lithuania). *Bulletin of Geosciences* 100(4): 547-579. DOI: 10.3140/bull.geosci.1929.
- Radzevičius, S. Želvys, T. Spiridonov, A. 2025. Wenlock (Silurian) cyclostratigraphy of Western Lithuania: a preliminary report. *Palaeontological Publications*, 7: 83-87.
- Želvys, T. Cichon-Pupienis, A. K. Stankevič, R. Garbaras, A. Radzevičius, S. 2025. Quantitative correlation of Lower Silurian carbonate facies in Lithuania: insights from carbon isotopes and crossrecurrence plots. *Bulletin of Geosciences*, 100(4): 607-615. DOI: 10.3140/bull.geosci.1945.

DAVID RAY

Honorary Research Fellow at the University of Birmingham, UK (please contact me by e-mail).

E-mail: daveray01@yahoo.com

During 2025, my research on the Silurian was focused upon the late Llandovery and Wenlock of the Midland Platform (UK), and included two published studies:

The first study was focused on the sequence stratigraphy of the platform successions of England and Wales during Telychian and Sheinwoodian times (Ray et al. 2025a). This study was in collaboration with Emilia Jarochowska, Helen Hughes, Alan Richardson, and Alan Thomas, and was focused upon the creation of a eustatic sea-level curve. Notably glacio-eustasy was identified as the main driver of sea-level change, with a glacial maximum occurring in the middle Sheinwoodian.

The second study was focused on the Homeric stratigraphy of the May Hill and Gorsley inliers of the southern Midland Platform (Ray et al. 2025b). This study was in collaboration with James Wheeley, Georgia Hazeldine, Adrian Burrows, and Steve Kershaw, and shows how the carbon isotopic (i.e., Homeric carbon isotope excursion), sea-level, and the lithological expression of this succession fits into the regional/global understanding of the Homeric. Notably, the Homeric age of the Gorsley Limestone is confirmed by this study, and a latest Homeric unconformity and island may be inferred for the Gorsley area.

I was also involved in three ongoing studies in 2025, which hopefully will be published this year:

The first study is led by Helen Hughes and in collaboration with Alan Thomas. It is focused on the trilobite associations of the Buildwas and Coalbrookdale formations (Wenlock), recorded from the Lower Hill Farm Borehole (Shropshire, England). Notably, the previously recognised *Dalmanites/Raphiophorus* trilobite Association has been divided into four subassociations, which appear to be water depth-related and allow for the creation of a sea-level curve. In addition, direct evidence of durophagous predation of trilobites occurs in the form of clusters dominated by fragmentary trilobite sclerites, and are interpreted as regurgitated food boluses originating from the crops of orthoconic cephalopods.

The second ongoing study is in collaboration with Lisa Oostra and Emilia Jarochowska, and focuses on the Homeric of the Usk Inlier (Monmouthshire, Wales). This study has identified the first and second peaks of the Homeric carbon isotope excursion (CIE) within the limestone lithofacies of the Ton Siltstone (Trostrey Limestone Member) and Usk Limestone formations. Notably, the onset of the Homeric CIE is well expressed, and is associated with regressive wave-rippled sandy siltstones within the Ton Siltstone Formation, with the overlying first peak of the CIE within nodular limestones (Trostrey Limestone Member) that are representative of the early transgressive systems tract. Based upon the

integration of carbon isotope data and sequence stratigraphy the Usk Inlier succession has been correlated with the wider Midland Platform, as well as key successions upon Baltica.

The third ongoing study is in collaboration with Tom Whitehouse and James Wheeley, and focuses on the latest Telychian *Petalocrinus* Limestone from the Woolhope Inlier (Herefordshire, England). There the crinoid *Petalocrinus* and associated coral beds represent a mass occurrence event/s. Fieldwork has identified the *Petalocrinus* Limestone at two locations within Haugh Wood (Woolhope), and has allowed for palaeontological, sedimentological, and sequence stratigraphic investigations. This study aims to provide an explanation for the occurrence of the *Petalocrinus* Limestone.

Publications

Ray, D.C., Jarochovska, E., Hughes, H.E., Richardson, A.S. and Thomas, A.T. 2025a.

Glacio-eustatic sea-level changes and their magnitude in the Telychian–Sheinwoodian (Silurian) of England and Wales. *Journal of the Geological Society*, 182, jgs2024-292.

<https://doi.org/10.1144/jgs2024-292>

Ray, D.C., Wheeley, J.R., Hazeldine, G., Burrows, A. and Kershaw, S. 2025b. The Homerian (Silurian) stratigraphy of the May Hill and Gorsley inliers of England, UK: integration of carbon isotope data, sedimentology, and sequence stratigraphy. *Bulletin of Geosciences*, 100, 489–504, <https://doi.org/10.3140/bull.geosci.1924>.

VALERI SACHANSKI

1. University of Mining and Geology “St. Ivan Rilski”, Department of Geology and Geo-Information, Studentski Grad, Sofia 1700, Bulgaria

2. Geological Institute, Bulgarian Academy of Sciences, Acad. G. Bonchev Str., Bl. 24, Sofia 1113, Bulgaria

Email: valeri.sachanski@mgu.bg; v_sachanski@geology.bas.bg

A large part of my time is devoted to teaching students at the University. My student Dimitar Dimitrov, known to those of you who attended the Joint ISSS-SDS Meeting, Sofia, Bulgaria, Spetember 12–18, 2024, has shown a sustained interest in the study of graptolites and is currently developing a master’s thesis. I hope that this work will eventually develop into a PhD thesis on the topic:

“Biostratigraphic, structural, and geochemical challenges around the boundary between the Aeronian and Telychian stages (Llandovery Series, Silurian System) in the Western Balkans (Svoge tectonic unit, Srednogorie Zone).”

Some of our results related to the behavior of mercury within this stratigraphic interval were presented at the ISSS Meeting 2025 in Seville, Spain. Research in this direction is ongoing, as is my earlier work on graptolite biostratigraphy in Bulgaria, Türkiye, and, in recent years, eastern Serbia.

Academic meetings

International Subcommittee on Silurian Stratigraphy Meeting 2025 “Advances in Silurian chronostratigraphy and high-resolution correlation”, Spetember 10–13 2025, Seville, Spain

Publications

Andreeva, P., Sachanski, V., Kiselinov, H., Dimitrov, D., Pencheva, A., Georgiev, S., Filipov, P. 2025. Silurian–Lower Devonian carbonate and chert deposits from the Morava Unit (SW Bulgaria): Facies and depositional environments. In: Gutiérrez-Marco, J.C., Romero, S. (Eds), International Subcommittee on Silurian Stratigraphy Meeting 2025. “Advances in Silurian chronostratigraphy and high-resolution correlation”. Abstracts Book. – Palaeontological publications, 7, 23–24. ISBN-13: 978-84-09-76490-7

Sachanski, V., Dimitrov, D., Bidzhova, L., Stefanova, E., Raeva, E., Georgiev, S., Tanatsiev, S. 2025. Mercury spikes in a marine Aeronian–Telychian boundary section, Bulgaria. In: Gutiérrez-Marco, J.C., Romero, S. (Eds), International Subcommission on Silurian Stratigraphy Meeting 2025. “Advances in Silurian chronostratigraphy and high-resolution correlation”. Abstracts Book. – Palaeontological publications, 7, 101–105. ISBN-13: 978-84-09-76490-7

MUHAMMAD AQQID SAPARIN

Nanjing Institute of Geology and Palaeontology, Chinese Academy of Sciences, 39 East Beijing Road, Nanjing 210008, China.

Tel.: +60192661474; E-mail: otakuclubrkidz@hotmail.com, aqqid@nigpas.ac.cn

I am a postdoctoral researcher at the Nanjing Institute of Geology and Palaeontology, Chinese Academy of Sciences (NIGPAS) under the supervision of Prof. Yuandong Zhang. My research focuses on graptolites—particularly their systematics, biodiversity, biostratigraphy, and palaeobiogeography—across the South China and Sibumasu palaeoplates during the Late Ordovician–Early Silurian transition (Katian to Llandovery). At present, I am studying graptolite assemblages from Yunnan (China), southern Thailand, and northern Peninsular Malaysia. I would like to give a huge thanks to my Chinese colleague, Dr. Zhongyang Chen, for his assistance with fieldwork in Yunnan, and to my Thai colleague, Dr. Mongkol Udchachon, for his support in graptolite collection in Thailand. In 2025, I participated in several international meetings where I presented research on the graptolite faunas and biostratigraphy of the Ordovician–Silurian transition in the Sibumasu terrane. These include the International Subcommission on Silurian Stratigraphy (ISSS) Meeting 2025 in Seville, Spain; the IGCP 735 Annual Meeting 2025, “Rocks and the Rise of Ordovician Life,” in Changsha, Hunan, China; and the 4th International Conference on Palaeontology of Southeast Asia (ICPSEA 2025) at Mahasarakham University, Thailand.

Publications:

Saparin, M.A., Wang, H.-Q., Jeon, J.-W., Wu, X.-J., Chen, Q. & Zhang, Y.-D. 2025. Early Rhuddanian (Llandovery, Silurian) graptolites from Shiqian, northeastern Guizhou Province, South China. *Bulletin of Geosciences* 100(4), 581–605.

<https://doi.org/10.3140/bull.geosci.1935>

LADISLAV SLAVÍK

Institute of Geology of the Czech Academy of Sciences, Rozvojová 269, Praha 6, CZ-165 00, Czech Republic; Tel. 00420 233087247

Email: slavik@gli.cas.cz

In 2025 continued activities concentrated on Mid-Palaeozoic global correlation and late Silurian - early Devonian stratigraphy. The proposal for the Přídolí Series subdivision (Slavík, L. et al.) has been updated, enlarged and re-submitted to the ISSS in December 2025.

Academic meetings

ISSS (International Subcommission on Silurian Stratigraphy/ ICS) Meeting 2025, Seville, Spain, 10th–13th September – Scientific Committee – LS, International member

Publications:

Yin, J.Y., Slavík, L., Zong, R.W., Gong, Y.M. (2025): Silurian–Devonian boundary in Northern Xinjiang, NW China. *Palaeogeography, Palaeoclimatology, Palaeoecology*, 659 (2025) 112636: 1-19. <https://doi.org/10.1016/j.palaeo.2024.112636>

- Yin, J.Y., Slavík, L., Zong, R.W., Gong, Y.M. (2025): Silurian–Devonian boundary in Northern Xinjiang, NW China. – GEOTOLOSA Abstract Book, p. 46, Toulouse.
- Slavík, L., Manda, Š., Štorch, P. Tasáryová, Z. (2025): A possible GSSP for the base of the Wenlock Series – Multiproxy stratigraphy and biotic response to an extinction event. In Gutiérrez-Marco, J.C. Romero, S. (Eds.), International Subcommission on Silurian Stratigraphy Meeting 2025. “Advances in Silurian chronostratigraphy and high-resolution correlation”. Abstract Book. Palaeontological publications, 7, 115-118. Sevilla

PETR ŠTORCH

Department of Palaeobiology and Stratigraphy, Institute of Geology of the Academy of Sciences of the Czech Republic, Rozvojová 269, Prague, CZ 165 00, Czech Republic.

Tel.: +420-233-087-261

Email: storch@gli.cas.cz

My research on Silurian graptolites and stratigraphy continues, albeit at a reduced intensity. Collaboration with Štěpán Manda, Juan Carlos Gutiérrez-Marco, Zongyuan Sun, Mike Melchin, and David Loydell has continued through several informal projects. Studies related to the replacement section for the Telychian GSSP have either been published or submitted for publication. A manuscript on the uppermost Rhuddanian and Aeronian graptolite assemblages and the stratigraphy of the El Pintado 5 section, located near the El Pintado 1 base Telychian stratotype, has been submitted to Newsletters on Stratigraphy and is currently under revision. Preliminary results were presented at the ISSS Conference in Sevilla.

Major attention is currently being devoted to a comprehensive study of lowermost Silurian (lower Rhuddanian) graptolites, biostratigraphy, and the sedimentary record in the Prague Synform (Czech Republic). A study of Rhuddanian graptolite evolutionary radiation and faunal dynamics recorded in the Estana section in the Central Pyrenees (Spain) will also be completed in 2026.

Publications:

- Gutiérrez-Marco, J.C., Corradini, C., Corriga, M.G., Romero, S. and Štorch, P. 2025. Palaeontological characterization of the youngest Silurian strata from the Western Iberian Cordillera (Bádenas and Luesma formations, Nevera Inlier, NE Spain. In: Gutiérrez-Marco, J.C., Romero, S., eds. International Subcommission on Silurian Stratigraphy meeting 2025. „Advances in Silurian chronostratigraphy and high-resolution correlation“. Abstract Book. Palaeontological publications, 7, 55-64.
- Loydell, D.K., Gutiérrez-Marco, J.C., Štorch, P. and Frýda, J. 2025. The replacement Global Stratotype Section and Point (GSSP) of the Telychian Stage of the Llandovery Series, Silurian System. *Episodes*, 48(2), 199–211. <https://doi.org/10.18814/epiiugs/2025/025009>
- Romero, S., Gutiérrez-Marco, J.C., Štorch, P., Perrier, V., Rábano, I., Ebbestad, J.O.R. and Zamora, S. 2025. An upper Gorstian non-graptolite fauna from the El Pintado 1 reference section, Sierra Morena de Sevilla UNESCO Global Geopark, SW Spain. In: Gutiérrez-Marco, J.C., Romero, S., eds. International Subcommission on Silurian Stratigraphy meeting 2025. „Advances in Silurian chronostratigraphy and high-resolution correlation“. Abstract Book. Palaeontological publications, 7, 89-100.
- Slavík, L., Manda, S., Štorch, P. and Tasáryová, Z. 2025. A possible GSSP for the base of the Wenlock Series – Multiproxy stratigraphy and biotic response to an extinctions event. In: Gutiérrez-Marco, J.C., Romero, S., eds. International Subcommission on Silurian Stratigraphy meeting 2025. „Advances in Silurian chronostratigraphy and high-resolution correlation“. Abstract Book. Palaeontological publications, 7, 115-118.
- Štorch, P., Gutiérrez-Marco, J.C., Loydell, D.K. and Frýda, J. 2025. The uppermost Rhuddanian and Aeronian succession in the El Pintado 5 section (Valle Syncline, SW

- Spain). In: Gutiérrez-Marco, J.C., Romero, S., eds. International Subcommission on Silurian Stratigraphy meeting 2025. „Advances in Silurian chronostratigraphy and high-resolution correlation“. Abstract Book. Palaeontological publications, 7, 119-122.
- Tonarová, P., Bek, J., Strossová, Z., Frýda, J., Camina, S.C., Männik, P., Vodrážková, S., Štorch, P., Kubajko, M. and Libertín, M. 2025. Sheinwoodian fossil assemblage from the Prague Basin. In: Gutiérrez-Marco, J.C., Romero, S., eds. International Subcommission on Silurian Stratigraphy meeting 2025. „Advances in Silurian chronostratigraphy and high-resolution correlation“. Abstract Book. Palaeontological publications, 7, 127-128.

ZUZANA STROSSOVÁ

Institute of Geology and Paleontology, Faculty of Science, Charles University, Albertov 6, 128 43 Prague, Czech Republic E-mail: zuzana.strossova@seznam.cz

My research interests are focused partly on Ordovician and primarily Silurian graptolites, especially on their biostratigraphy and paleoecology. However, in the near future, I would like to focus on connecting and comparing the knowledge of Silurian graptolites of the Prague Synform in an international context, comparative biostratigraphy between key groups of the Paleozoic, and new findings from the Silurian geology of the Prague Synform in general.

The first step in the above-mentioned focus is the publication about the Co-occurrence of conodonts and graptolites in black Silurian shales in the Prague Synform (in collaboration with C. Corradini and M. G. Corrigan).

Other publications focused on graptolites from the Prague Synform are in progress or are under revision (in collaboration with Petra Tonarová and Jörg Maletz).

Publications

- Strossová, Z., Corradini, C., & Corrigan, M. G. (2025). The first documented co-occurrence of conodonts and graptolites in Silurian (Telychian) black shales of the Prague Synform, Czech Republic, and its stratigraphical and palaeoecological significance: Z. Strossová et al. *Swiss Journal of Palaeontology*, 144(1), 79. doi.org/10.1186/s13358-025-00416-y .

Abstracts

- Strossová, Z., Corradini, C., & Corrigan, M. G. 2025. The first documented co-occurrence of conodonts and graptolites in Silurian (Telychian) black shales of the Prague Synform, Czech Republic, and its stratigraphical and palaeoecological significance. *International Subcommission on Silurian Stratigraphy Meeting 2025*. At: Seville (Spain), September 2025, pp. 123–125.
- Tonarová, P., Bek, J., Strossová, Z., Frýda, J., Camina, S. C., Mannik, P., Vodrážková, S., Štorch, P., Kubajko, M., Libertín, M. SHEINWOODIAN FOSSIL ASSEMBLAGE FROM THE PRAGUE BASIN. *International Subcommission on Silurian Stratigraphy Meeting 2025*. At: Seville (Spain), September 2025, pp. 127–128.

SUN ZONGYUAN

Institute of Sedimentary Geology, Chengdu University of Technology, No.1 Dongsan Road, Chenghua District, Chengdu, Sichuan, China; Tel. +86 18502511567
Email: sunzongyuan19@cdut.edu.cn

Supervised one MSc student who successfully graduated in 2024 and is now employed by China National Petroleum Corporation (CNPC).

Publications

Sun, Z., Melchin, M. J., Štorch, P., Chen, Q., Zhao, F., & Fan, J., 2024. High-resolution integrated stratigraphy of Upper Ordovician to lower Silurian strata: applications to black shale drill cores in South China. *Newsletters on Stratigraphy*, 57(4), 445–474.

<https://doi.org/10.1127/nos/2024/0752>

Academic meetings

Young Scholars Forum on Palaeontology (China), Chengdu, China, Chengdu University of Technology, December 15–16, 2024. Served as one of the key organizers on behalf of the host institution.

PETRA TONAROVÁ

Czech Geological Survey, Geologická 6, 152 00 Prague 5, Czech Republic.

E-mail: petra.tonarova@geology.cz

I continue to work at the Czech Geological Survey, focusing on Lower Paleozoic microfossils, mainly on scolecodonts. I have had the opportunity to work on samples from various regions, such as the Prague Basin, Estonia, and Lithuania. Together with my colleagues, we studied Sheinwoodian microfossils from the Prague Basin, and our results were presented at the International Subcommittee on Silurian Stratigraphy Meeting 2025 in Seville, Spain (Tonarová et al. 2025a). In a study of the Wenlock section, we discussed complex sedimentological data, together with assemblages of marine fossils, and washed early plants and their spores from a nearby volcanic island. A manuscript on this topic is currently being prepared. We completed another study focused on the influence of Silurian glaciation on jawed polychaetes (Tonarová et al. 2025b), published in a special volume of the *Bulletin of Geosciences* dedicated to the great Silurian worker Jiří Kříž. Research on the Ordovician/Silurian boundary interval in Estonia is also in progress, and the first results were presented at the IGCP735 meeting in Changsha, China (Moghalu et al. 2025).

Publications:

Moghalu, O., Kröger, B., Buatois, L., Mángano, G., Tonarová, P., Hints, O. & Toom, U. 2025. Palaeoenvironment Implications of a Multi-Proxy Assessment of the Hirnantian-earliest Rhuddanian Carbonates of Estonia (Baltica). *In: Wang, W. (ed.) IGCP 735 meeting in Changsha, Hunan, China, 17–21st October 2025*, 28.

Tonarová, P., Bek, J., Strossová, Z., Frýda, J., Camina, S.C., Männik, P., Vodrážková, S., Štorch, P., Kubajko, M. & Libertín, M. 2025a. Sheinwoodian fossil assemblage from the Prague Basin. *In: Gutiérrez-Marco, J.C. and Romero, S. (Eds) International Subcommittee on Silurian Stratigraphy Meeting 2025. “Advances in Silurian chronostratigraphy and high-resolution correlation”*. Abstracts Book, Palaeontological publications, 7, 157 pp., 127–128.

Tonarová, P., Frýda, J., Kubajko, M. & Hints, O. 2025b. Response of Silurian jawed polychaete fauna to environmental changes during the Mid-Ludfordian glaciation in the Prague Basin, Czech Republic. *Bulletin of Geosciences*, 100, 617–644. DOI: 10.3140/bull.geosci.1913.

THIJS R. A. VANDENBROUCKE

Ghent University, Dept. of Geology (WE13), Krijgslaan 281 / S8, 9000 Ghent, Belgium; Tel. +32 (0)9 264 45 15 ; Webpage: www.earthweb.UGent.be; Instagram: @palaeo_UGent
Email: Thijs.Vandenbroucke@UGent.be

Thijs Vandenbroucke (Belgium-UGent) continues to supervise various ECR projects on the Silurian at UGent. **Dr. Carolina Klock** defended her PhD in October 2025, focussing on the palynology of the Silurian Aeronian, Valgu and Mulde events, using material from the

USA Midwest, Anticosti and Gotland. **Dr. Tim De Backer** defended his PhD in January 2026, focussing on the geochemistry and palynology of selected sections of the upper Silurian and Devonian in N. America and Sweden. **Iris Vancoppenolle** continues her PhD project focussing on the palynology of the Ireviken event, with a focus on Gotland and the USA. **Himadri Haldar's** PhD project focusses on stable carbon isotope geochemistry in the Ordovician and Silurian. MSc student **Nick Jespers** has graduated in 2025 with a project focussing on chitinozoans from the Mulde Event on Gotland. These are projects in collaboration with Poul Emsbo (USGS), Patrick McLaughlin (Illinois Geol. Survey), Mikael Calner (ULund), Appy Sluijs (Utrecht), Brad Cramer & Alyssa Bancroft (UIowa), Mark Williams (ULeicester) and André Desrochers (UOttawa). **Dr. Mathilde Bon** has defended her joint PhD between UGent and ULille, co-supervised by Kevin Lepot, where she investigated the organic geochemistry of, amongst others, Silurian palynomorphs.

Publications

- Vancoppenolle, I., Emsbo, P., McLaughlin, P. I., De Baker, T., Klock, C., Calner, M., Cramer, B., Munnecke, A., & Vandenbroucke, T. R. A. 2026. A spike in malformed chitinozoans announces the Ireviken Ocean Anoxic Event in the lower Wenlock. *Global and Planetary Change*, 258, 105302. <https://doi.org/10.1016/j.gloplacha.2026.105302>
- De Backer, T., Emsbo, P., McLaughlin, P. I., Vancoppenolle, I., Klock, C., Munnecke, A., & Vandenbroucke, T. R. A. 2026. Metal induced chitinozoan malformations link the Mid-Ludfordian OAE to the venting of metalliferous hydrothermal basin brines into the Silurian ocean. *Global and Planetary Change*, 259, 105303. <https://doi.org/10.1016/j.gloplacha.2026.105303>
- Klock, C., McLaughlin, P.I., Paton, T., Bancroft, A. M., Cane, G., Vandenbroucke, T. R. A. & Emsbo, P. 2025. The onset of the Silurian Mulde biogeochemical event in the midcontinent basin (USA). 2025. *Palaeogeography, Palaeoclimatology, Palaeoecology*, 675, 113096, <https://doi.org/10.1016/j.palaeo.2025.113096>
- Jonckheere, F. M .R., Klock, C., Desrochers, A., Daoust, P. & Vandenbroucke, T. R. A. 2025. Refining chitinozoan biostratigraphy through the Early and Late Aeronian biogeochemical events on Anticosti Island, Quebec. *Journal of Micropalaeontology* 44, 319–344, <https://doi.org/10.5194/jm-44-319-2025>

OLEV VINN

Institute of Ecology and Earth Sciences, University of Tartu, Ravila 14 A, 50411 Tartu, Estonia.

E-mail: olev.vinn@ut.ee

I conduct research on the evolution of symbiosis, predation, bioerosion, and encrustation during the Silurian. My work also focuses on the palaeontology of problematic calcareous tubeworms from the Palaeozoic, including cornulitids, tentaculitids, microconchids, *Sphenothallus*, and related groups, as well as on the evolution of tubeworm biomineralization. Additional research interests include trace fossils from the Silurian of Estonia and other regions. I currently serve as an editor of the *Journal of Paleontology*, and submissions addressing Silurian fossils are most welcome.

Publications

- Negi, S.R., Vinn, O., Singh, B.P., Bhargava, O.N. & Isakar, M. 2025. Gastropod, cephalopod, and tentaculid fauna from the Takche Formation (Ordovician-Silurian), Tidong Valley, Kinnaur Himalaya. *Historical Biology* 37(10), 2230-2237.

- Vinn, O., El Hedeny, M., Alkahtane, A.A. & Alfarraj, S. 2025. Early cryptic microconchids and other invertebrates in empty nautiloid shells from the Silurian of Saaremaa Island, Estonia. *Neues Jahrbuch für Geologie und Paläontologie, Abhandlungen* 314(3), 321-327.
- Vinn, O., Ernst, A., Tinn, O., Lang, L., Isakar, M., El Hedeny, M., Almansour, M.I. & Alfarraj, S. 2025. Symbiosis in late Silurian (Ludfordian) bryozoans from Saaremaa Island, Estonia. *Annales de Paléontologie* 111(3), 102869.
- Vinn, O., Wilson, M.A., Isakar, M. & Toom, U. 2025. Rare *Arachnostega* traces in brachiopod and gastropod molds from the Silurian of Gotland (Sweden) and Saaremaa (Estonia): Was tropical climate unfavorable for the trace makers? *Neues Jahrbuch für Geologie und Paläontologie, Abhandlungen* 313 82), 153-159.
- Vinn, O., Zapalski, M.K. & Wilson, M.A. 2025. Evolutionary paleoecology of macroscopic symbiotic endobionts in Phanerozoic corals. *Earth-Science Reviews* 263, 105071.

WANG GUANGXU

State Key Laboratory of Palaeobiology and Stratigraphy, Nanjing Institute of Geology and Palaeontology, Chinese Academy of Sciences (CAS), 39 East Beijing Road, Nanjing 210008 CHINA; Tel: +86-25-83282129
E-mail: gxwang@nigpas.ac.cn

A paper on the origin of the Lhasa terrane was published in 2025, followed by a monograph on Late Ordovician–middle Silurian stauriid rugose corals, which has just been released in *Fossils & Strata* this February.

Publications

- Jeon, J., Chen, Z.Y., Wang, G.X., Zhang, Y.D., 2026. Middle Llandovery (Silurian) stromatoporoids from Baingoin, Xizang (Tibet), China. *Journal of Palaeogeography* 15, 100336.
- Wang, G.X., Zhan, R.B., Jin, J., Chen, Z.Y., Percival, I.G., Wei, X., Liang, Y., Cui, Y.N., Wang, Y., Zhang, Y.T., 2025. Northeastern Indian origin of the Lhasa terrane. *Gondwana Research*, 147, 184–191.
- Wang, G.X., 2026. *Systematics and Evolution of Cyathophylloidiid and Stauriid Rugose Corals (Late Ordovician–Mid-Silurian)*. *Fossils and Strata*, 73, 1–195.

JAMES WHEELLEY

School of Geography, Earth and Environmental Sciences, College of Life and Environmental Sciences, University of Birmingham, Edgbaston, Birmingham B15 2TT, UK. T: 44(0)1214146158, E: j.r.wheelley@bham.ac.uk, W: <https://www.birmingham.ac.uk/staff/profiles/gees/wheelley-james>

Two student projects with Dave Ray (see his entry); Georgina Hazeldine's already published (Ray et al. 2025b), and Tom Whitehouse's hopefully later this year.

Publications

- Ray, D.C., Wheelley, J.R., Hazeldine, G., Burrows, A. and Kershaw, S. 2025b. The Homeric (Silurian) stratigraphy of the May Hill and Gorsley inliers of England, UK: integration of carbon isotope data, sedimentology, and sequence stratigraphy. *Bulletin of Geosciences*, 100, 489–504, <https://doi.org/10.3140/bull.geosci.1924>

NINA WICHERN

University of Münster, Institute of Geology and Palaeontology, Corrensstraße 24, 48149 Münster, Germany.

Email: nwichern@uni-muenster.de

In late 2025 I submitted a book chapter to a Geological Society of London Special Publications volume in honour of Robin Cocks, together with colleagues Theresa Nohl (Vienna) and Michiel Arts (Liège). In this chapter we review Silurian carbon cycle perturbations, with a special focus on recent developments, the potential role of astronomical forcing, and their preservation in the rock record. The chapter is currently in review and will hopefully appear some time in 2026.

SETH YOUNG

Department of Earth, Ocean, & Atmospheric Science, Florida State University, Tallahassee, FL 32306-4520, sayoung2@fsu.edu, phone: 850-644-2703

Seth A. YOUNG (USA) is continuing to investigate and reconstruct marine redox conditions on both local and global scales from Silurian stratigraphic successions from the Great Basin (Idaho, USA), Appalachian Basin (Virginia/West Virginia, USA), USA Midcontinent (Tennessee), Baltoscandian (Sweden, Estonia, and Latvia), and Welsh Basin (Wales, England). These various projects in the early-mid Paleozoic are ongoing collaborations with Jeremy Owens (FSU), Benjamin Gill (VTU), Per Ahlberg (LU), Mats Eriksson (LU), Emma Hammerlund (LU), Olle Hints (TUT), Dimitri Kaljo (TUT), David Loydell (UP), Paula Noble (UNR), Simon Poulton (UL), and Paul Wignall (UL). Last year I published with my PhD student, Mahdi Maaleki-Moghadam, a middle Silurian multi-basin paleoredox investigation in *Global and Planetary Change* from successions in Arctic Canada and Latvia, respectively. Additionally, I had several students and a postdoc working in my research group present oral and poster presentations at Geological Society of America regional and national conferences in 2025. These conference presentations were on Ordovician & Silurian chemostratigraphic projects from northern Sweden, eastern & southern Baltic areas, as well as shale successions from Idaho, USA. These active projects reconstructing both local and global marine redox conditions spanning the Llandovery through Homerian intervals using novel proxies (e.g., I/Ca, Tl isotopes, Fe speciation, trace metals) in both Welsh, Franklinian and Baltic basins.

Publications

Maaleki-Moghadam, M, Lindskog, A, Noble, PJ, Kaljo, D, Hints, O, Goodin, JT, Owens, JD, & Young, SA, 2025. A multi-basin comparison of paleoredox conditions during the middle Silurian Mulde/*lundgreni* event. *Global and Planetary Change* 255 (105085). 1–15. DOI: <https://doi.org/10.1016/j.gloplacha.2025.105085>.

ZHAN RENBIN

State Key Laboratory of Palaeobiology and Stratigraphy, Nanjing Institute of Geology and Palaeontology, Chinese Academy of Sciences, 39 East Beijing Road, Nanjing, China; Tel. 0086-13851647619

Email: rbzhan@nigpas.ac.cn

For several years, my major research has been concentrated on the Ordovician stratigraphy and brachiopods, but, together with my domestic and international colleagues, I have also conducted some Silurian related investigations. In 2025, I was helping my colleague Dr. Huang Bing prepare a big monograph “Silurian Brachiopods of China” (Chinese version). It is supported by a project from the Ministry of Science and Technology of China, and will be finished by the end of 2026. Besides, we are continuing our everlasting investigation on the Silurian marine red beds, and have obtained some progress this year (see below).

Publications

Wang Guangxu, Zhan Renbin, Jin Jisuo, Chen Zhongyang, Percival, I.G., Wei Xin, Liang Yan, Cui Yunong, Wang Yi and Zhang Y.T. 2025. Northeastern Indian origin of the Lhasa terrane. *Gondwana Research*, 147: 184–191.

Zhang Xiaole, Rong Jiayu, Tang Peng, Zhan Renbin, Wang Yi, Chen Zhongyang, Zong Ruiwen, Huang Bing and Wei Xin. 2025. The first set of Silurian marine red beds in South China: Spatiotemporal distribution, diachronism and paleogeographic significance. *Science China Earth Sciences*, 68(8): 2527–2544.

Wang Yi, Zhang Xiaole, Guo Wen, Tang Peng, Wang Kai, Wang Yuxuan, Peng Huiping, Liu Bingcai, Xu Honghe and Zhan Renbin. 2025. Stratigraphic distribution and sea-land geographic transition during and after the Yangtze Uplift in the Guizhou-Chongqing-hunan border region, South China. *Journal of Stratigraphy*, 49(3): 278–290 (in Chinese with English abstract).

ZHANG YUANDONG

Nanjing Institute of Geology and Palaeontology, Chinese Academy of Sciences, 210008 China; Tel. 0086-25-83282145

Email: ydzhang@nigpas.ac.cn

Yuandong ZHANG (China) is continuously working on:

(1) Systematic palaeontology and biostratigraphy of the Anji Biota (dominated by late Katian to Rhuddanian sponges and graptolites) in Anji County, northwestern Zhejiang Province, SE China. This work has been funded by President’s International Fellowship Initiatives program (PIFI) and a grant from NSF of China (2018-2021). Recently, the work has been financially supported by a new grant from Ministry of Science and Technology of China (2023-2028), which aims to address the faunal turnovers during the Ordovician-Silurian transition and their potential impact on the mass accumulation of organic matter in black shale. This work has been jointly carried out by me with June Ma from NIGPAS, Joseph Botting and Lucy Muir from UK, and will be implemented further through international cooperations with Olle Hint from Estonia and Yong Yi Zhen from Australia.

(2) Systematic palaeontology of Silurian (Telychian, Ludlow and Pridoli) graptolites from the Junggar Basin, Xinjiang, northwestern China, together with Chen Xu and some other Chinese colleagues from NIGPAS and China University of Geosciences (Wuhan). A palaeontological study of the graptolites from the limited outcrops in the basin has turned out as a manuscript in 2023, which has been revised in 2024-2025 and will be re-submitted in early 2026.

Publications:

BOTTING, J.P., MUIR, L.A., JANUSSEN, D., DOHRMANN, M., ZHANG, Y.D., and MA, J. Y.*. 2025. Advanced crown-group Rossellidae (Porifera: Hexactinellida) resembling extant taxa from the Hirnantian (Late Ordovician) Anji Biota. *Papers in Palaeontology*, Vol. 11, Part 1. e70000. <https://doi.10.1002/spp2.70000>.

WANG, W.H., LIU, B.Y., SONG, J.Q., LI, W.J., FANG, X., ZHANG, Y.D. 2025. Middle Telychian (Llandovery, Silurian) graptolite and chitinozoan faunas and biostratigraphy of the upper part of the Xiushan Formation in the Xiushan area, southwestern China. *Bulletin of Geosciences*, 100(4): 529-545. DOI 10.3140/bull.geosci.1927.

SAPARIN, M.A., WANG, H.Q., JEON, J., WU, X.J., CHEN, Q., ZHANG, Y.D.* 2025. Early Rhuddanian (Llandovery, Silurian) graptolites from Shiqian, northeastern Guizhou Province, South China. *Bulletin of Geosciences*, 100(4): 581-605. DOI 10.3140/bull.geosci.1935.

Academic meetings

I have been invited by the organizers of Strati2026 to take the lead for a one-day Mid-Conference field trip to Anji, to show the participants the middle Ordovician to early Silurian stratigraphic successions and the yielded faunas in Anji, western Zhejiang Province, China.

ZHAO WENJIN

Institute of Vertebrate Paleontology and Paleoanthropology (IVPP), Chinese Academy of Sciences(CAS); postal address: 142 Xi-Zhi-Men-Wai Street, Beijing 100044, China; Tel.: +86 10 88369290;

E-mail: zhaowenjin@ivpp.ac.cn

Over the past year, I kept working on research of the Silurian vertebrate paleontology and relative stratigraphy, supported by the National Natural Science Foundation of China. Together with my colleagues at home and abroad, using synchrotron X-ray tomography we demonstrated that individual pectoral plates in the oldest unequivocal jawed vertebrate, the Silurian (c. 439 Mya) chondrichthyan *Fanjingshania renovata*, develop from five separate growth centres. The systematic hard tissue remodelling in *Fanjingshania* reveals an unexpected growth dynamic within chondrichthyans that relates to the formation of a macromeric skeleton through integration of modular elements (Andreev et al., 2025). In 2025, a monograph of The Galeaspida and New Fossil Records in China, mainly wrote by Early Vertebrates Group in IVPP, CAS, has been completed and published. This book not only provides a detailed introduction to Chinese galeaspids for their morphology, anatomy, classification, radiation, extinction, habits, biostratigraphy and paleogeographical significance, but also covers the fossil discovery process, research history and methods (Gai et al., 2025). In addition, I conducted one field work in West Yunnan during June 2025. Some new knowledges on the Silurian stratigraphic division and correlation in the Southwest China were obtained.

Publications

Andreev, P. S., Zhu, M., Brakenhoff, L., Li, Q., Zhao, W.-J., Peng, L.-J., Marone, F., Dearden, R. P. & Rücklin, M. 2025. The shoulder girdle of early chondrichthyans grew by skeletal remodelling. *Biology Letters*, 21: 20250411.

<https://doi.org/10.1098/rsbl.2025.0411>

Gai, Z.-K., Zhu, M., Donoghue, Philip C. J., Zhao, W.-J., Shan, X.-R., Lin, X.-H. and Zhang, Y.-M. 2025. *The Galeaspida and New Fossil Records in China*. Shanghai: Shanghai Science and Technology Press, 1-223 (in Chinese)

REPORTS FROM FRIENDS OF THE SILURIAN SYSTEM

ESTEFANÍA ASURMENDI

Departamento de Geología - Facultad de Ciencias Exactas, Físico-Químicas y Naturales -
Universidad Nacional de Río Cuarto
Instituto de Ciencias de la Tierra, Biodiversidad y Ambiente (ICBIA; CONICET-UNRC)
Ruta Nac. N° 36 Km. 601 - (X5804BYA) Río Cuarto, Córdoba, Argentina
Tel: +54-0358-4676229
E-mail: [easurmendi@exa.unrc.edu.ar](mailto: easurmendi@exa.unrc.edu.ar)

My research centers on the high-resolution stratigraphy and sedimentology of the Hirnantian-Silurian-Devonian succession in the Argentine Precordillera, a key interval for understanding paleoenvironmental change and basin evolution during the early Paleozoic. I aim to refine the regional stratigraphic framework and improve correlations across this critical transition.

In collaboration with Susana Heredia, Eduardo Toro, Ana Mestre, María José Gómez, and PhD student Exequiel Denis Díaz, I investigate the La Chilca and Los Espejos Formations, contributing new insights into depositional dynamics and environmental shifts across the Ordovician–Silurian–Devonian.

My work combines detailed sedimentological analysis with the study of microbially mediated sedimentary processes, exploring how microorganisms influence sediment production, stabilization, and early diagenesis through the development of clastic biosedimentary rocks. This integrated approach enhances paleoenvironmental reconstructions and strengthens regional-scale interpretations.

SARA ROMERO

Área de Paleontología, Dpto. GEODESPAL, Facultad de Ciencias Geológicas, pl. 2, José Antonio Novais 12, E-28040 Madrid, SPAIN
E-Mail: [sarome01@ucm.es](mailto: sarome01@ucm.es)

Sara ROMERO (Complutense University of Madrid, Spain) is currently holding a predoctoral research contract at the Complutense University of Madrid (Spain). Her PhD thesis focuses on the study of Middle and Upper Ordovician trilobites from the Iberian Range (Spain), under the supervision of Juan Carlos GUTIÉRREZ-MARCO, Sofia PEREIRA, and Fernando GARCÍA JORAL. In addition, her research includes the study of other Silurian trilobite assemblages from southwestern Europe in collaboration with Juan Carlos GUTIÉRREZ-MARCO, Isabel RÁBANO and Sofia PEREIRA.

Publications

Gutiérrez-Marco, J. C., Corradini, C., Corrigan, M. G., Romero, S., & Štorch, P. (2025)

Palaeontological characterization of the youngest Silurian strata from the Western Iberian Cordillera (Bádenas and Luesma Formations, Nevera Inlier, NE Spain). In Gutiérrez-Marco, J. C., Romero, S. (Eds.), International Subcommission on Silurian Stratigraphy Meeting 2025. “Advances in Silurian chronostratigraphy and high-resolution correlation”. Abstracts Book. Palaeontological publications, 7, 55.

Romero, S., Gutiérrez-Marco, J. C., Štorch, P., Perrier, V., Rábano, I., Ebbestad, J. O. R., & Zamora, S. (2025). An upper Gorstian non-graptolite fauna from the El Pintado 1 reference section, Sierra Morena de Sevilla UNESCO Global Geopark, SW Spain. In Gutiérrez-Marco, J. C., Romero, S. (Eds.), International Subcommission on Silurian Stratigraphy Meeting 2025. “Advances in Silurian chronostratigraphy and high-resolution correlation”. Abstracts Book. Palaeontological publications, 7, 89.

Gutiérrez-Marco, J. C., Loydell, D. K., & Romero, S. (2025). The Silurian of northern Seville: steps towards its international recognition In Gutiérrez-Marco, J. C., Romero, S. (Eds.), International Subcommission on Silurian Stratigraphy Meeting 2025. "Advances in Silurian chronostratigraphy and high-resolution correlation". Abstracts Book. Palaeontological publications, 7, 131-155

PETRO TSEGELNYUK

I, Petro Dem'yanovich Tsegelnyuk (Petro Tsegelnyuk), Doctor of Geological and Mineralogical Sciences, worked during peacetime at the Institute of Geological Sciences (Kyiv) of the Ukrainian Academy of Sciences as the Head of the Department of Paleontology and Stratigraphy of Paleozoic Deposits.

Tragic events in Ukraine (the war) threw my family to Canada (Toronto, Ontario). I continue to work "remotely" at the Institute as a "research fellow." I am studying the remains of fossilized brachiopods, chitinozoa, and graptolites from the Ordovician and Silurian Periods, as well as the stratigraphy of these systems. In my free time, I think and write about paleontology, geological time, and stratigraphy.

WEI XIN

State Key Laboratory of Palaeobiology and Stratigraphy, Nanjing Institute of Geology and Palaeontology (NIGP), Chinese Academy of Sciences, 39 East Beijing Road, Nanjing 210008, China

E-mail: xwei@nigpas.ac.cn

I work in China as a Research Associate at the Nanjing Institute of Geology and Palaeontology (NIGP), Chinese Academy of Sciences. I am interested in the macroevolution, taxonomy, palaeoecology and biogeography of Silurian trilobites. I am currently focusing on survival, recovery and radiation of trilobites during early Silurian. Now I am working on recovery patterns of trilobites after the LOME, together with Profs. Renbin ZHAN, Jiayu RONG and Bing HUANG (NIGPAS). Last year, a paper on the uppermost Hirnantian-Rhuddanian trilobite faunas discovered in South China had been accepted for publication in the Journal of Systematic Palaeontology.

Publications

Wei Xin, Zhan Renbin, Yan Guanzhou, Zhang Xiaole, Wang Guangxu. 2025. The earliest known recovery trilobite faunas following the Late Ordovician mass extinction (LOME) in South China and their ecological distribution. *Journal of Systematic Palaeontology*, 23 (1): 2461362.